

Journal of Sports Philately

NUMBER 6

FEBRUARY 1963

VOLUME 1

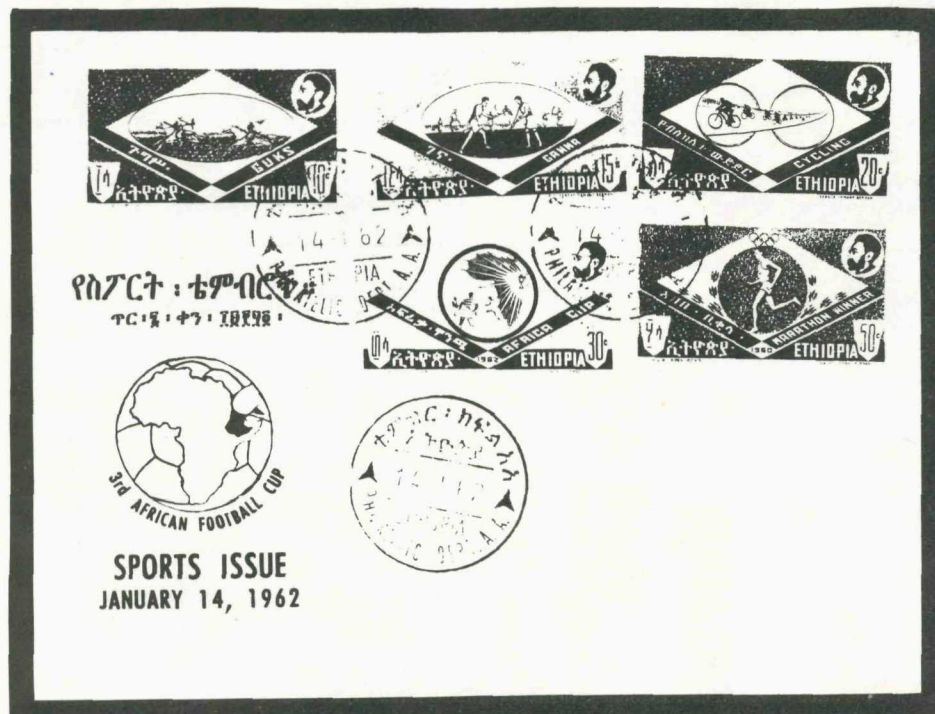
THE ETHIOPIAN VICTORY IN THE 1960 OLYMPIC MARATHON

- Irwin Bloomfield -

On January 14, 1962, Ethiopia issued a set of five sports stamps commemorating the Games of Ethiopia and the 1960 Olympic Games. The 10¢ green and red depicts the time-honored game of "Guks" (warlike horsemanship) with two colorful shielded horsemen engaged in the chase preceding the duel. The 15¢ cream rose and brown shows the game "Ganna" (Ethiopian hockey) with ill-protected players using a hard wooden ball in a contest closely akin to soccer. The 20¢ red and blue stamp shows cycling, which recently had a resurgence in Ethiopia with entries of teams in the 1956 and 1960 Olympic Games. The 30¢ blue and violet commemorates the Third Africa Football Cup (soccer), an event in which nine African nations vied for honors in Addis Ababa, January 14-22, 1962. The newly-completed Haile Selassie I Stadium was used for this competition.

However, our attention is focused on the 50¢ gold and green stamp depicting

Bekele Abebe, marathon champion of the 1960 Rome Olympics--hailed as the pride of the African continent he represents, as well as of his native Ethiopia, and the first African athlete selected for philatelic recognition. The entire series was illustrated by the artist Sereke Yemane Berhan and was printed in sheets of 50 stamps. (A registered first day cover of this set is shown to the left.)



the following is a condensed paraphrasing.

The marathon in the 1960 Olympics, over historic terrain, was one of the most exciting of these fierce foot races. A thrilling description of the race is given in the book, "Olympic Games 1960", of which

(Continued on Page 4)

SPORTS PHILATELISTS INTERNATIONAL

2

President: Robert M. Bruce, P. O. Box 18, West Point, New York
 Vice-Pres: F. Quentin Farr, 19 Hillside Rd., Elizabeth 3, New Jersey
 Sec-Treas: Lawrence McMillan, 3261 Los Coyotes Blvd., Long Beach 8, California
 Director : Travis L. Land, 938 Essex St., San Antonio 10, Texas

"JOURNAL OF SPORTS PHILATELY"

Managing Editor:
 Assoc. Editors: Singrey J. Hughes, 811 Camino Miramonte, Tucson, Arizona
 Travis L. Land, 938 Essex St., San Antonio 10, Texas
 Ira Seebacher, 48 Knollwood Rd. South, Roslyn, New York
 Advertising Mgr: Jack Bloom, 1118 S. Lake St., Los Angeles 6, California
 Publisher : William G. Brecht, Brecht and Holer, Inc., 694 Third Ave., New York 17, New York

NOTE: All catalogue numbers quoted in this publication are from "Scott's Standard Postage Stamp Catalogue", unless specifically stated otherwise.

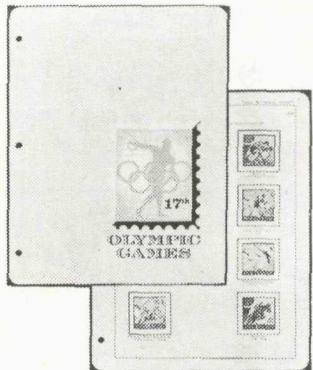
EDITORIAL COMMENT

Your temporary editor wishes to thank those few members who have sent in material of one type or another for use in "JSP". Now let's have this trickle become a veritable deluge. It is the only way in which we can have a lively, interesting, and educational publication. P. O. Box 18 at West Point, New York, is big enough to handle a lot of incoming mail--of the right type.

I have been toying with the possibility of a question-and-answer column as a regular feature of "JSP". It is my idea not to use cut-and-dried questions and answers, but rather those sticklers which are actually puzzling our members. Questions would be published regularly and answers just as soon thereafter as members send in the needed information.

It goes without saying that no question would be regarded as too simple and none as too difficult for use. It also goes without saying that such a column will not function without a steady flow of questions and then the whole-hearted cooperation of all our members in finding the answers for publication. This must be a self-propelling project with the editor serving only as a channel, preparing first the questions and then the answers, for publication in "JSP". If you have questions and would like help in getting them solved, start a barrage now.

More than ever, in this in-between-editors stage, we would like your impressions of "JSP". Both complaints and compliments are welcome, but especially we need your suggestions for improvement of our periodical. If "JSP" isn't giving you what you want and you remain silent about it, you have only yourself to blame.




OLYMPIC GAMES

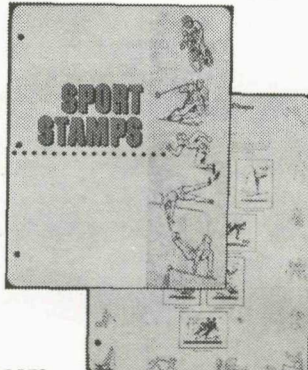
	Price	Post.
1st through 15th Games	3.25	.45
16th Games, complete	3.00	.45
17th Games, complete	7.55	.65
17th Games, Part 1	1.25	.15
17th Games, Part 2	1.45	.15
17th Games, Part 3	2.00	.20
17th Games, Part 4	1.60	.20
17th Games, Part 5	1.25	.15
18th Games, Part 1	Approx. end of May	

SCOUTS

	Price	Post.
Part 1 through Sup. No. 2	4.90	.50
Part 1, (to Feb. 1957)	3.00	.40
Supplement No. 1, 1957	1.35	.20
Supplement No. 2, 1958-9	.55	.15
Supplement No. 3	.65	.15



K-LINE PUBLISHING, Inc.
 1433 S. CUYLER AVE., BERWYN, ILL.



SPORTS

	Price	Post.
Part 1, A through B countries	2.85	.35
Part 2, C through Finland	4.30	.45
Part 3, France through It. Somal.	4.00	.45
Part 4, Italy through Panama	4.25	.45
Part 5, Panama through Salvador	4.25	.45
Part 6, S. Mar. through Viet-Nam	2.50	.25
Part 7 (1959 Suppl. to Parts 1-6)	2.50	.25
Supplement No. 1, Oct., 1961	2.00	.25
Supplement No. 2, April, 1962	3.90	.50
Supplement No. 3, Oct., 1962	4.50	.50
Sports complete	35.05	1.75

Other Topics and Countries Available — Write for Complete Price List

By now SPI's special issue of "Linn's Weekly Stamp News" is history. Copies were sent to all SPI members through the courtesy of the publishers. I hope you enjoyed the material thoroughly and that it will attract many of the non-SPI-member sports collectors throughout the world. Those of you who found the articles just a little non-technical must realize that this was popular-interest material pitched at the average stamp collector, not just sports collector.

Our special issue was marred only by the three very strange classified advertisements inserted by ATA. If you did not notice these unique productions, check your copy of the special issue under "Publications", "Societies", and "Topicals". I suggest that you study them carefully, noting their bizarre make-up and phrasing, and then draw your own conclusions. Those of you who belong to ATA may wish to submit a complaint to the administration of that organization.

Our thanks are due to George W. Linn and to Editor Carl P. Rueth for making this issue possible. We have reserved the February, 1965, issue of "Linn's" for SPI; frankly, it was the first unreserved one available. At any rate, it is not too soon to begin planning for that special issue. For a starter, who wants to edit it?

As of this date (February 9th), SPI is still looking for a replacement for Fred Farr as editor of "JSP". And we still lack a number of regular contributors to our periodical as well as technical assistants to aid in its preparation and publication. In short, we need help and we need it now.

Manager Bill Stoms reports a rather lukewarm interest in our forthcoming spring auction. I have consoled him by citing past auctions; things have always speeded up as the deadline approached. I hope that such will be the case this year. Don't let us down. There is still a chance to rush your donations and consignments in to Bill.

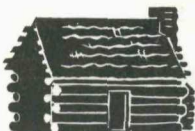
The directors are planning to issue a membership directory in the near future. It will contain a listing of the current members with their addresses and an indication of their collecting preferences in the field of sports. This directory will also include the constitution of SPI and a complete statement of the organization--officers, directors, and committees. Also to be announced for the first time will be a panel of translators to help you with your foreign correspondence and source material. We hope to get this to you this spring.

The directors are also planning a sports and recreation check-list. Under the present plans this check-list will include all sports and recreation stamps using a rather broad set of definitions. It will be prepared alphabetically by country and will have space to record the holdings of each individual. There is some thought that it will be printed in pocket size. Considerable progress has already been made in assembling the material for this check-list.

Bob

UNBELIEVABLE VALUES

MINT SETS:



Costa Rica	C57-66	58.50
Czechoslovakia	B137-9	29.50
Guatamala	C158-162	6.75
Greece	184-197	127.00



- * WANT LIST SERVICE * NEW ISSUES
* MINT COLLECTIONS - complete sets - ALL PRICE RANGES

MAY I HEAR FROM YOU ??

CARL A. MAGERL
408 PENNSYLVANIA AVE.
NORTH WALES, PENNA.

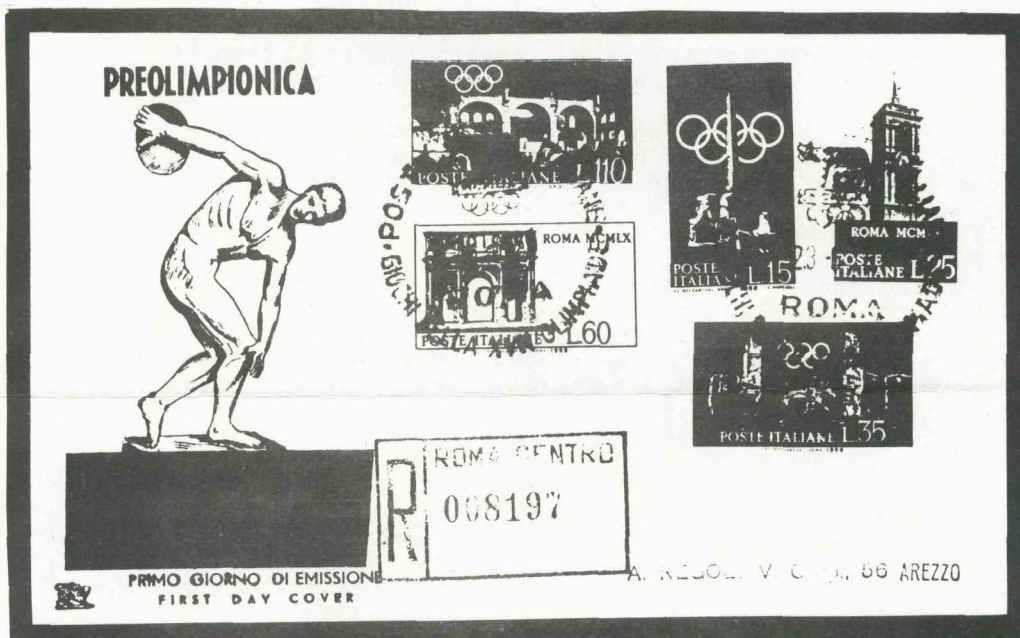
THE ETHIOPIAN VICTORY IN THE 1960 OLYMPIC MARATHON (Cont'd)

Only a few hundred people have gathered to watch the start of the marathon race at the foot of the Campidoglio. Most of them seem to be photographers. The time is half-past five in the evening.

Suddenly the runners--about seventy of them--burst forth from the melee. Two of these men have the same name, Abebe. They belong to the little team of six cyclists and six track and field athletes sent to Rome from Ethiopia. Both Abebes are wearing orange shorts and green shirts. But even if there had been half a dozen Abebes, no one would have paid particular attention. The Swedish trainer has said they are first class runners, but for most onlookers they are just two men with tongue-twisting names--Bekele Abebe and Waquira Abebe.

Bekele, perhaps, is not completely inconspicuous. He is a short, black, rather handsome lad, and runs barefoot. They say he is twenty-eight and a professional soldier, serving in the bodyguard of the Abyssinian Emperor. He runs just for fun, Bekele declares.

The 42-kilometer marathon course starts along the Via Fori Imperiali up to the Colosseum and then past the Arch of Constantine (shown on the L60 of Italy's 1959 pre-Olympic set) Five hundred yards later the Baths of Caracalla appear (L35 value of the same set). From there the course follows the broad asphalt highway, the Via Cristoforo Colombo, with modern apartment houses on the left and relics of ancient city walls on the right. (Note the first-day cover of the Italian pre-Olympic set on the right.)



The little Abyssinian Bekele Abebe races along with his thin, sinewy legs like some long-distance runner of Biblical times, nimble as a deer. At the 10-kilometer mark he is already in the leading group. After 20 kilometers the group consists of him and the Moroccan Rhadi alone. The two run in rhythm like a four-legged tandem. At successive 5-kilometer intervals radio announcers throughout the world repeat the same news: "Rhadi leading, Abebe making the same time". For 20 kilometers they both have taken 62 minutes and 39 seconds. Then at 35 and again at 37 kilometers the order is reversed. "Abebe leading, Rhadi the same time".

At 40 kilometers the position is still the same, but at this point the Abyssinian decides to vary things. He leaves the Moroccan farther and farther behind him,

SLOGANS * CANCELS * METERS

belong in your SPORT, SCOUT and OLYMPIC GAMES collections

LARGE SELECTION + MONTHLY MAIL AUCTION SALES

Also U.N., REFUGEE, MAPS, INSECTS, ROTARY, STAMP CENTENNIALS,
RED CROSS, MEDICAL, BIRDS, ANIMALS, SPACE, and others.

MOE LUFF

125 GREENE ROAD

SPRING VALLEY, N. Y.

until at 41 kilometers there is a gap of about 50 yards. The little mustachioed, brown-skinned man is running so lightly that his feet scarcely seem to touch the ground. Most of the competition has taken some refreshment along the course at a snack bar which sells blueberry juice, glucose, and similar fortifiers. But Abebe refuses any nourishment; he is used to running, thirsty or not. "We Abyssinians are a poor people with no mechanical transport", he explains later. "so we run everywhere on foot. Forty kilometers are nothing to me."

Meanwhile dusk has fallen. The course now runs along the Via Appia Antica, a road laid down by the Censor Appius Claudius in the year 312 B. C. Along this stretch there is a bersagliere soldier posted at every ten yards with a flaming torch in his hand to light the way. The scene is a fantastic one, and seems almost unearthly as the silhouettes of the marathon runners flash by.

The wheels of time seem to have been turned back by twenty centuries. Dimly the runners can discern the old memorials with weathered inscriptions, fragments of ancient walls, carved gravestones, and headless statues. But they can spare no thoughts for these, for they must summon the last resources of their bodily energy.

It has long been apparent that the decision lies between two men alone, the Africans Abebe and Rhadi. The contest for third place between the Russian, Popev, and the New Zealander, Magee, has ended in the latter's favor. Despite a grim struggle Popov has gotten slower and slower and lost 40 seconds to Magee at the 37-kilometer snack bar.

The last stretch of this course becomes a triumphant climax for Abebe and Rhadi. The Via Appia Antica is lined with dense crowds on either side. Women are to be seen kneeling and crossing themselves as the runners flit past wraith-like.



Cover with Special Marathon Cancellation and Photographs of Famous Sights in Rome

A broad avenue leads in a gentle curve up to the Arch of Constantine, where the winning post stands. The wonderfully light-stepping Abyssinian is caught in the searchlights. He has achieved a new and splendid Olympic record time. Rhadi arrives 25.4 seconds later. Then comes Magee, the New Zealander. The race over, Bekele Abebe is as fresh as if he had just come from an evening stroll. Someone brings him a blanket, but he waves it away. Then the tension begins to subside and he laughs. Only after a while does he calm down and his laughter gives way to tears that stream down his cheeks. It is the first time in Olympic history that an Ethiopian has won a gold medal. Bekele's brother, Waquira, comes in 7th.

VIC. WAILLY

SPECIAL!

Stamps and Covers for Collectors

P. O. BOX 26, ROXBURY 19, MASSACHUSETTS

AUSTRALIA EMPIRE GAMES:

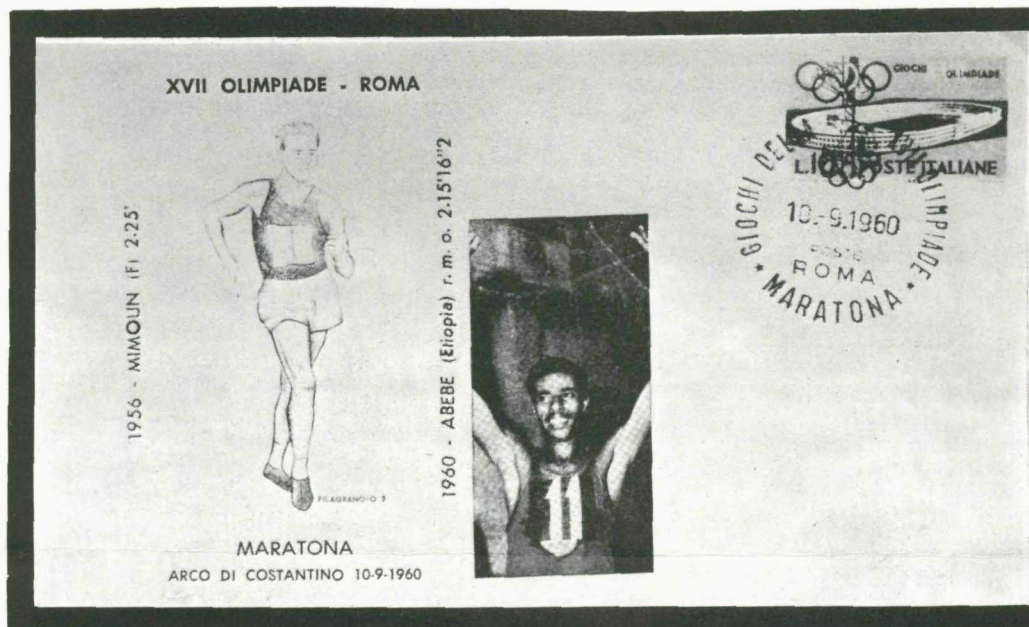
Mint stamps	.45	26 different Sports	
Airletter Mint	.50	Postmarks	9.50
First Day Cover	.75	Single covers	.50

THE ETHIOPIAN VICTORY IN THE 1960 OLYMPIC MARATHON (Cont'd)

Later some reporters ask Bekele why he ran barefoot. He looks down at his dusty toes and explains: "These Roman streets were much too hard for me; I found it painful to walk on them. In Africa I wear shoes!"

The official results of this 1960 Olympic marathon race are:

1.	Abebe, B.	Ethiopia	2:15:16.2
2.	Rhadi	Morocco	2:15:41.6
3.	Magee	New Zealand	2:17:18.2
4.	Voroviev	U.S.S.R.	2:19:09.6
5.	Popov	U.S.S.R.	2:19:18.8
6.	Togersen	Denmark	2:21:03.4




Italian Cover with Special Marathon Cancellation and Photograph of Abebe

(Editor's Note: In a subsequent issue of "Journal of Sports Philately", we will present another article entitled "Further Comments on Olympic Marathons", again by Irwin Bloomfield.)

REVIEWS

Brun's "Catalogue of Sports and Scout Stamps"

This 124-page catalogue is one of a series of four topical listings prepared by Clement Brun; others cover flora, fauna, and the United Nations. All are based on the 1963 edition of the Yvert and Tellier catalogue.



the

DIPLOMAT

Stamp Shop

EXCLUSIVE DISTRIBUTORS IN U.S.A.
OF WORLD FAMOUS
LANDMANS SPORTS CATALOG

OLYMPICS—SPORTS—EUROPA
REFUGEES—NEW REPUBLICS
I.G.Y.—SCOUTS—FOREIGN UN
U.F.U.—STAMP ANNIVERSARIES

110 WEST 43RD STREET
NEW YORK 36, N. Y.

Free Bargain Price Lists

It is well illustrated, but includes only one example of each type of stamp even though the basic type may have several different major vignettes. It lists both mint and used values; but eliminates variations in printing, color, perforation, and watermark. Sports stamps and scout stamps are in separate sections.

Although written in French, the catalogue can be followed rather easily. To ease the strain, the sales representatives in this country have prepared a translation of the forward of the catalogue, French-English listings of country names and of colors, and a guide to conversion of French prices to the American dollar.

Sports stamps are included only if the individual stamp shows the sports as a main subject or if it was issued in direct commemoration of some sports event. A sport must be competitive in nature, not merely physical exercise, to justify inclusion. All sports listed were involved in the 1960 Olympic Games or are sponsored by the "National Sports Committees". Thus horse races (covered in the fauna catalogue), air sports, and children's games are excluded. Similar criteria apply to scout stamps.

The Communist-dominated countries of North Korea, North Viet-Nam, Mongolia, and Red China are included.

Although the definitions of sports and scout stamps may be too narrow to satisfy some collectors, this catalogue is an interesting and useful supplementary source of information. It performs a special service in providing the Yvert catalogue numbers and in covering the Communist countries omitted by the catalogues published in this country.

Brun's "Catalogue de Timbres-Poste Sports et Scoutisme" is available from Enholm's for Stamps, 825 Hayes Ave., Racine, Wisconsin. The price is, surprisingly enough, just one dollar. It is a bargain.

COLLECTING AUTOGRAPHS ON FIRST DAY COVERS

- Herman J. Cohen -

In the specialized field of collecting autographs on first day covers, many exciting and provocative events are experienced in the process of acquiring philatelic masterpieces. It could be the signature of a president or a king. If and when you become absorbed in this particular field of collecting, be prepared to do a great deal of research. Planning and preparation are the foundation of a successful autograph collection.

It takes time, patience, initiative, and resourcefulness to complete a single transaction. First day covers must match the personality. Each cover must have dignity and meaning. The cachet should be in keeping with the event to be documented. Valid addresses are often difficult to obtain. Research and repeated letter writing are necessary to ascertain the correct destination for sending your request to the individual you wish to autograph your cover.

Letters must never be demanding. In most instances the person who is requested to sign a cover is most accommodating, providing you do not ask for an unreasonable request. Most important personalities realize the significance of leaving their written impression as a message for posterity.

It has been the author's good fortune to have had first-hand experience in securing the autographs of many Olympic medal winners. An exciting experience occurred while attending a meeting of former Olympic competitors at the Helms Athletic Foundation in Los Angeles. Many of the outstanding athletes were only too happy to autograph first day covers of the 1960 Winter Olympics. During the weeks that followed I was able to add the autographs of Bob Mathias, Johnny Weissmuller, Rafer Johnson, Perry Q'Brien, Dr. Sammy Lee, and Hal and Olga Connolly.

These covers were enhanced by typing the name of the Olympian under his signature and the event in which he or she was a medal winner. A prize possession is a first day cover autographed by Johnny Weissmuller, a winner of five gold medals in the 1924 and 1928 Olympic Games.

It is of prime importance that you plan and prepare well in advance just what your goal is to be. You may wish to specialize in the field of science or sports. The rewards for your painstaking efforts are satisfaction and a most unusual collection of interminable value.

The torch of the XVII Games. The following is a letter from Captain Carlo Condarelli of Catania, Italy. It should prove of much interest to those of you who like to be "in" on developments. Certainly Carlo was.

"I have read with much interest about the Olympic Torch in the "Journal of Sports Philately" and I congratulate you on the accuracy of the news and the chronology of the events. I would like to give some additional and specialized information regarding the philatelic commemoration of the Torch Relay connected with the Games of the XVII Olympiad, a matter in which I was fortunate enough to participate.



"I think it's useful for philatelists to know the whole procedure in every philatelic commemoration. For the first time in the history of the modern Games, sports philately was officially included in the whole of the Olympic organization in Rome in 1960 with the help of the General Secretary, Dr. Marcello Garroni. The Philatelic Assistance Service, recently organized, prearranged a number of devices by which we wanted to show the development of the Games in each stage, and so to constitute a complete collection. You have in your collections many of the items such as the various cards, folders, covers, and cancellations. The stages which required the most careful organization have been (1) the lighting of the Torch in Olympia, (2) the carrying of the Torch on the school ship "Amerigo Vespucci", and (3) the Torch Relay from Syracuse to Rome.



Withdrawing the Mail from the Helicopter

"The PAS for these particular commemorations was arranged: an aerogramme commemorating the lighting of the Torch in Olympia, and a folder commemorating with a summary the voyage of the "Amerigo Vespucci" with the itinerary of the relay.

"The realization of these two items required the collaboration of the following: (1) General Postmaster of Athens, (2) Military Air Force, (3) Italian Navy, (4) Italian Navy Commandant of Messina, (5) the Command of the 1st Group Helicopter Group of Catania, and (6) the Command of the ship "Amerigo Vespucci".



"The aerogramme, printed in Rome and sent to the Chief Postmaster of Athens for the application of the Olympic commemoration series and special cancellations in Olympia. Afterwards the aerogramme was consigned by a special charter to the airport of Athens on board the Italian Air Force aircraft which provided the transportation for the Italian Olympic Delegation to the ceremony of the lighting of the wonderful Torch. The aerogramme arrived in Rome on the night of August 13th and on the morning of the 14th was made subject to the special cancellation of arrival at the Olympic Postal Office in the Olympic Village.

"The folder commemorating the transport of the Torch on the "Amerigo Vespucci" and the Torch Relay from Syracuse to Rome was planned in Rome and completed in the Board Commissary of the ship at the Piraeus. A special cancellation was applied showing a special Board Mail strike.

"The first contact with the "Amerigo Vespucci" coming from Greece and carrying the Torch was effected in the Mediterranean Sea about 25 miles from Syracuse by a helicopter of the 1st Group of the Navy, piloted by Commander Negro. As manager of the Philatelic Department of the Olympic Games I was on board and took the philatelic mail prepared in Greece for the torch lighting and for the Torch Relay on Italian territory. The event was commemorated by a special cancellation. Afterwards the folder was marked with the special cancellation of Naples and Castelgandolfo, seats of the Olympic Games crossed by the Torch Relay. This is the real story of the special services that required two years in preparation. Such a philatelic project has many difficulties. It has been the most touching moment of my life and I'll always have a wonderful memory of it.

"The photo shows the small shallop withdrawing the mail from the helicopter. The photo bears a L5 stamp of the commemorative series with special cancel and also another cancel in upper left hand corner but it is doubtful if the cancels will re-print plainly."

(Editorial note: We have made rough drawings of the cancellations appearing on the photo and inserted them near the original cancellations. Carlo did some splendid work with the Philatelic Assistance Office during preparation for the XVII Games. He is one of the most prolific writers on philatelic subjects relating to sports and has a remarkable collection of the most highly prized "special" Olympic pieces. Ever ready to help the sports cause, Carlo has frequently sent specialized items to members of the staff of "JSP". We look forward to articles by Carlo Condarelli in the future. T.L.L.)

* * * * *

Computer processing of results of 1964 Olympic Games. The Tokyo Organizing Committee has announced that it will use a computer to provide up-to-the-minute information to spectators, athletes, officials, and news media on as many as 24 events at a time during the 1964 Olympic Summer Games.

Using communication devices to link the computer with widely separated events, some as far as 40 miles from the Olympic Data Center; the system will collect, process, and transmit to all Olympic areas the results and standings of each event as it takes place.

During the fifteen-day period (Oct. 10-24), the equivalent of twenty world championship contests will be held in such sports as track and field, swimming, diving, rowing, yachting, gymnastics, equestrian events, etc. Three hundred and forty gold medals will be awarded. Additions to the program, including judo, women's volleyball, and a women's pentathlon, will make the 1964 Summer Games the largest ever held. More than 8,000 athletes from 103 member nations of the International Olympic Committee are expected to participate.

Masaji Tabata, Secretary-General of the Games, said: "Athletes, spectators, and newsmen have always wanted up-to-the-minute results of all events. With the growth in size and complexity of the Games the job has become more difficult. The most practical way to solve the problem is with a computer system.

Mr. Tabata said the selection of International Business Machines to provide the service is based on the company's participation in the VIII Olympic Winter Games at Squaw Valley, Calif., in 1960 and its experience in preparing for the IX Olympic Winter Games which will be held in Innsbruck, Austria, in February, 1964.

In order for the tele-processing system to collect the times, distances, judges' scoring, and other results; data terminals will be located within each of the 24 stadia which will make up the Olympic complex.

As each result is recorded at the site of the event, it will be keyed into a terminal and transmitted to the data center where a computer will record the result and send a verification back to the sender--all in a few seconds. The system also will make any necessary computations, compare the result to other performances, determine if it is a new record, and print out standings, when appropriate. In less than thirty seconds, the information will be flashed to a scoreboard at the event site.

When an event is completed, the computer will print the final results and transmit the information to high-speed printers at twelve key locations where it will be printed and distributed. These results also will be displayed on the scoreboards and will be transmitted via teletype to Japanese and international news agencies. H.T.

* * * * *

Olympic fund raising seals. As promised, the third set of fund raising seals of the Japanese Organizing Committee is reproduced here:



Does this arouse any memories? The Olympic Village for the 1964 Olympic Games will be at Asake, once known as Camp Drake to the American security forces in Japan.

- Jim Hughes -

October Addenda

- 25th AFGHANISTAN. Boy Scout issue. 1p, 2p, 3p, 4p, 25p, 75p, and 100p, all Afghan boy scout and emblem. Quantity: 400,000 (first four values), 20,000 (other values), and 2,000 imperforate sets.
- 25th AFGHANISTAN. Teachers' Day issue. 1p, pole vault; 2p, pole vault; 3p, high jump; 100p, pole vault; 150p, high jump; and 250p souvenir sheet, high jump. Printed in Vienna by the Austriche Printing Department from designs by Assadullah Safi, Afghan artist. Quantities: 400,000 (1p through 3p), 20,000 (100p and 150p), and 3,000 imperforate sets. Also 18,000 perforate souvenir sheets and 3,000 imperforate souvenir sheets were printed.

November Addenda

- 30th VENEZUELA. First National Sports Games, Caracas, 1961. 5¢, shot putter; 10¢, soccer; 25¢, swimmer; 40¢ airmail, cyclists; 75¢ airmail, baseball; 85¢ airmail, woman athlete; also two imperforate souvenir sheets with three values of the above on each. Printed in diamond format by multicolored offset by the Bundesdruckerei in Berlin.

YEMEN. Two of the 1960 Olympic stamps overprinted by the Royalists in Arabic and English "Free Yemen Fights for God, Imam, Country". 2b (black overprint), 2b (red overprint), 4b (red overprint), and 4b (black overprint). (Additional information)

December Addenda

- 15th UNITED STATES. Printed on Giori press on plates of 200 subjects, issued in panes of 50. Quantity: 120,000,000. (Additional information)
- 21st MEXICO. 100th anniversary of the first balloon flight in Mexico by Joaquin de la Cantolla y Rico. 80¢, Rico balloon. Quantity: 1,000,000.
- 28th HUNGARY. Racing sports. 20f, motorcyclist; 30f, motorcyclist with sidecar; 40f, 60f, 1f, and 1.20f, various single motorcyclists; 1.70f, motorcycle with sidecar; 2f, go-cart racer; 3f, auto racers. Printed in multicolor photogravure and diamond format (44mm x 44mm) by the State Printing Office from designs by Gyorgy Foldiak. Quantity: 420,000 perforate sets, 12,000 imperforate sets.

January Addenda

BRAZIL. Victory in world soccer championship, 1962. 10Cr, soccer player superimposed on hemisphere of North and South America.

CENTRAL AFRICAN REPUBLIC. Commemorating the Tropics Cup competition, Dec. 24-31, 1962. 100fr, athlete with torch and palm branch, five-ring emblem. Printed by the Paris State Printing Office from design by Combet.

CZECHOSLOVAKIA. World Table Tennis Championship in Prague, 1963 (30h), 80th anniversary of Czech cycling (60h), First Czech Winter Sports Games, 1963 (80h), 15th year of Czechoslovakian Flat Track Race of "Golden Helmet" at Pardubice (1k), World Weight Lifting Championships in Prague, 1963 (20k), and First Summer Czech Games, 1963 (1.60k). 30h, table tennis player; 60h, cycling; 80h, skier; 1k, horse race; 1.20k, weight lifter; and 1.60k, hurdler. Engraved by J. A. Svengsbir (30h and 60h), B. Housa (80h and 1.20k), J. Mracek (1k), and J. Hercik (1.60k). Printed by rotary press combined with photogravure in sheets of 50 from designs by Karel Hruska.

February

- 5th PORTUGAL. Victory of the Lisbon "Sport Lisboa E Benfica" Club in European Soccer Championships of 1961 and 1962. 1E and 4.30E, both soccer emblem. Printed by offset by the Portuguese Mint from the design by Arthur Bual. Quantities: 6,500,000 (1E) and 1,500,000 (4.30E).

15th SWEDEN. European and World Ice Hockey Championships, 1963. 250 and 1.70kr, both ice hockey player. Engraved in rolls of 100 from designs by Gosta Kriland and engravings by Czeslaw Slania. The 1.70kr value is also issued in booklets of twenty. (Additional information)



Forecast

BRITISH ANTARCTIC TERRITORY. 1p, skiing and Annigoni portrait of Queen Elizabeth II. Engraved and recess-printed by Bradbury, Wilkinson, and Company from the design by Michael Graman. (Additional information)

FIJI. First South Pacific Games. 3p, runner, rugby, and symbol of Games; 9p, discus; 1sh, hockey players; 2sh/6p, woman high jumper. (Aug. 1st)

FRANCE. World Water Skiing Championships (1963).

GERMAN DEMOCRATIC REPUBLIC. Honoring Anti-Fascist Sportsmen. (4)(with surcharge)(Mar. 19th)

ICELAND. SPORTS AND BOY SCOUTS (early 1963).

ITALY. Mediterranean Games (2)(Sept., 1963).

SWITZERLAND. Commemorating the 25th anniversary of the Pro Aero Foundation and the 50th anniversary of the first airplane flight over the Alps. 2fr. (June 1st)

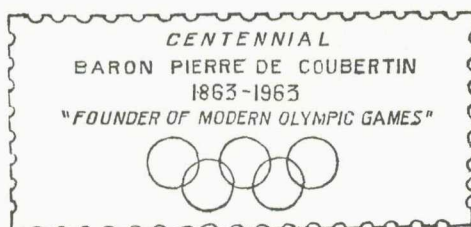
UNITED ARAB REPUBLIC. Commemorating the International Tennis Championship and International Cycle Race. Quantities: 2,000,000 each. (Mar. 10th)

NEWS OF OUR AFFILIATES

Sports Philatelists of the Philippines. President Floro Polcarpio reports a great deal of action out there in the Pacific. The last minute cancellation of the IV World Basketball Championship (over the granting of visas to the Yugoslavian team) forced SPOP to give up its sponsorship of a basketball commemorative issue and to cancel its First National Sports Philatelic Exhibition (NASPEX), planned for early December, 1962.

Dismayed but not disheartened, SPOP then requested the use of a postal slogan by the Bureau of Posts on January 1st on the occasion of the centenary of the birth of Baron de Coubertin. Their Postmaster General was cooperative, but arrangements could not be completed on such short notice.

Still not defeated, SPOP developed its private postal slogan, a sample of which follows:



HENRY TRACHTENBERG

115 rue HOCHÉ

IVRY / SEINE / FRANCE



bigger ...

better ...

NEW

more complete than ever!



NEW!

Send for my
Pocket Catalogue of Sport

75 CENTS

NEW!

post offices and telegraph offices were to apply their own official stamps on the backs of all their stamp stocks that were in their hands without a control marking. These various control markings are usually black or grey but they were also applied in blue (Patras, Megalopolis, others), violet (Messina, Corfu, Chalkis) and in various mongrel colors. The order concerning these controls seems to have been suspended by the second half of 1897; (h) The 20 l. and the 25 l. stamps with Austrian marine post cancels reading Lloyd Aust. in a blue single-line circular cancel are directly connected with the Greco-Turkish War. Stamps so cancelled are from letters forwarded from Volos to foreign countries via Austrian Lloyd.

Sc 184-97; Gi 110-21; Mi 96-107; YT 101-12; Zu 72-83

1900, December 22/1901. Provisional issue overprinted in new gold currency values with red typographed surcharge on values of 1896 Olympic set.

13. 5 l on 1 d blue (first half of Jan. 1901)
 - a. wrong font "M" (antique "M" with serifs)
 - b. small antique "M"
 - c. double surcharge, block "M"
 - d. double surcharge, antique "M"
 - e. wrong font "lambda" (with serifs) in "lepta"--Pane 2, Pos. 3, 6
 - f. "L" or "E" in "lepta"--Pane 2, Pos. 3, 6
 - g. dropped "lambda" in "lepta" (Greek letter "L")--Pane 3, Pos. 8
 - h. Greek "gamma" for "M" in "lepta"--Pane 3, Pos. 6
 1. extra vert. row of 13½ perfs down middle
14. 25 l on 40 l violet (Dec. 22, 1900)
 - a. red 25 l + black 50 l surcharge on 40 l
15. 50 l on 2 d olive brown (Dec. 22, 1900)
 - a. Type I "C" (narrow, ca. 2.75mm diameter)
 - b. Type II "C" (wide, ca. 3.50mm diameter)
16. 1 d on 5 d (first half of Jan. 1901)
 - a. 1st and 3rd letters of "drachm" are Greek "deltas" (Greek letter "D")--Pane 4, Pos. 9
17. 2 d on 10 d brown (first half of Jan. 1901)
 - a. 1st and 3rd letters of "drachmas" are Greek "deltas"--Pane 6, P 7
 - b. final "J" in "drachmas" is doubled--Pane 4, Pos. 8

Note: (a) "A.M." = "Axiá Metalliki" or "Value in Metal (gold)"; (b) The Greek postal Administration had to remit to all foreign postal administrations their share of the collected fees on a straight gold basis. Because of the low exchange value of Greek currency, the Government was forced to charge all U.P.U. rates in gold currency. These surcharged stamps, costing about 20% more than regular stamps of the same denomination, represented a needed issue for foreign parcel post and money orders, for which these stamps could only be used. They were not at first sold over the counter and could be affixed only by postal personnel. By the end of 1900, the 25 l. "A.M. stamp of an earlier issued overprint first became permissible to use for franking foreign mail instead of the 30 l. regular stamps; (c) Quantities of this issue were incinerated in 1921, particularly Nos. 14-17; (d) First day of issue, 12-22-00 was by the old style calendar. Equivalent new style date: 1-4-01; (e) the antique "M" types occur on the top two stamps (top row) of Pans 3, 4, 6. It is believed the antique "M" occurred on Pane 4 on part of the printing only; (f) The 15a "narrow O" occurs 38 times, while 15b "wide O" occurs 22 times per sheet, the latter in positions as follows: Pane 1, Pos. 1, 3; Pane 2, Pos. 4, 8, 10; Pane 3, Pos. 2, 3, 4, 6, 7; Pane 4, Pos. 1, 2, 3, 6, 9; Pane 5, Pos. 1; Pane 6, Pos. 3, 4, 6, 7, 8, 9; (g) some of the block "A.M." overprints exist with either or both letters smaller than normal; (h) Withdrawn with the appearance of definitive AM set on Jan. 1 (14), 1902.

Sc 159-64; Gi 148-52; Mi 118-22; YT 141-45; Zu 113-17

HANDBOOK

OF

SPORTS STAMPS

by Ira Seebacher

Section 18-----Germany to Greece

1957, April 30. Tenth International Peace Cycle Race. Wmkd DDR and flower; P 13xl3. Des. B. Petersen after an idea by H. Willner. Offset lithographed on chalk-surfaced paper. Valid through March 31, 1959.

28. 5 pf red orange

Design: Map of route of race showing Charles Bridge (Prague), City Hall (Berlin) and Palace of Culture (Warsaw)

Sc 346; Gi RZ363; Mi 568; YT 293; Zu 369

1958, July 22. Grand Prize of the DDR in Horse Racing. Wmkd DDR and flower; P 13xl3. Des. E. Schoner. Photogravure Graphische Werkstatt, Leipzig, on chalk-surfaced paper. Valid through March 31, 1960.

29. 5 pf sepia 31. 20 pf carmine brown
30. 10 pf dk. yellow green

Designs: 29-Mare and foal; 30-Trotter and sulky; 31-Flat race

Sc 394-96; Gi RZ446-48; Mi 640-42; YT 360-62; Zu 439-41

1958, August 7. Third Pioneer meeting in Halle in connection with the 10th anniversary of the founding of the Pioneer movement. Wmkd DDR and flower; P 12x13. Des. H. Klöppel. Offset lithographed on chalk-surfaced paper. Valid through March 31, 1960.

32. 10+5 pf blue green 33. 20+10 pf red

Designs: 32-Camp and camp bugler; 33-Boy and girl pioneer giving salute, pioneer banner

Sc B41-42; Gi RZ451-52; Mi 645-46; YT 365-66; Zu 444-45

1958, September 19. First Summer Spartacist Games of Friendly Armies. Wmkd DDR and flower; P 13x13. Des. O. Leisner. Offset lithographed on chalk-surfaced paper. Valid through March 31, 1960.

34. 10 pf emerald/lilac brown 36. 25 pf light blue/red
35. 20 pf brown carmine/yellow

Designs: 34-Soldier on obstacle course; 35-Emblem of games; 36-Marching athletes, flag and map

Sc 401-03; Gi RZ458-60; Mi 657-59; YT 370-72; Zu 453-55

1959, August 10. Third German Turn and Sports Festival, Leipzig. Wmkd DDR and flower; P 13x13½. Des. H. Priess. Offset lithographed. Valid through March 31, 1961.

37. 5+5 pf brown orange 40. 25+10 pf blue
38. 10+5 pf blue green a. double print
39. 20+10 pf carmine 41. 40+20 pf lilac

Designs: 37-Girl gymnasts in hoop drill; 38-High jump; 39-Gymnast on pommel horse; 40-Women gymnasts in club drill; 41-Fireworks over Leipzig Central Stadium, bell tower

Sc B44-48; Gi RZ 507-11; Mi 707-11; YT 421-25; Zu 512-16

1959, October 6. Tenth Anniversary of the DDR. Wmkd DDR and flower; P 13x13½. Des. L. Grünwald. Offset lithographed on toned paper. Valid through March 31, 1961

42. 40 pf black/red/yellow/greenish yellow
Design: Central Stadium, Leipzig, and national flag
Sc 461; Gi RZ 527; Mi 727; YT 443; Zu 533

1960, January 27. Olympic Games, 1960. Wmkd. DDR and flower; P 13x13½. Des. O. Volkamer. Offset lithographed. Valid through March 31, 1962

43. 5 pf sienna/ochre 45. 20 pf lilac/ochre
44. 10 pf dk blue green/ochre 46. 25 pf blue/ochre
Designs: 43-Boxers; 44-Women sprinters; 45-Ski jumper; 46-Sailboat
Sc 488-91; Gi RZ 546-49; Mi 746-49; YT 462-65; Zu 552-55

1960, June 23. Launching of the trade union (FDGB) vacation ship, June 25, 1960. Wmkd. DDR and flower; P 13x13½. Des. H. Priess. Offset lithographed. Valid through March 31, 1962.

47. 20+10 pf black/brown red/blue

Design: Ship off Stubbenkammer, sailboat and emblem of FDGB

Sc B59; Gi RZ 570; Mi 770; YT 486; Zu 576

1960, August 3. World Cycling Championships, Aug. 3-14. Wmkd. DDR and flower; P 13x13½ (No. 48), 13x12½ (No. 49). Des. E. Schoner. Offset lithographed. Valid through March 31, 1962.

48. 20+10 pf rose/red/black/blue/yellow/green
49. 25+10 pf blue/grey/brown

Designs: 48-Racing cyclists; 49-Cyclists on track

Sc B65-66; Gi RZ 579-80; Mi 779-80; YT 495-96; Zu 585-86

1960, August 29. Leipzig Autumn Fair, 1960. Wmkd. DDR and flower; P 13x12½. Des. F. Deutschedorf and H. Leitner. Offset lithographed. Valid through March 31, 1962.

50. 25 pf dk grey brown/light blue

Design: Export goods--camping equipment, "Wartburg" (automobile), sailboat. Also a family is shown using camping equipment

Sc 515; Gi RZ 582; Mi 782; YT 498; Zu 588

1960, September 19. Fourteenth Chess Olympics, Leipzig. Wmkd. DDR and flower; P 14. Des. H. Ilgenfritz, eng. O. Volkamer (Nos. 51-52) and M. Sachs (No. 53). Revers. Valid through March 31, 1962

51. 10+5 pf dk blue green 53. 25+10 pf blue
52. 20+10 pf claret

Designs: 51-Rook and globes (emblem); 52-Knight and globes; 53-Bishop and globes

Sc B67-69; Gi RZ 585-87; Mi 786-88; YT 501-03; Zu 590-92

9. 1 d blue (221,250---?)
10. 2 d olive brown (157,800---?)
a. horiz. pair, imperf between
11. 5 d green (107,160---?)
a. horiz. pair, imperf. between
12. 10 d brown (92,200---?)
a. horiz. pair, imperf between

Designs: 1,2-Boxers; 3,4-Statue of the Discobolus by Myron; 5,7-Vase depicting Pallas Athene (Minerva); 6,8-Quadriga being driven by Nike, Goddess of Victory; 9-Averoff Stadium, Athens, with Acropolis in background; 10-Hermes of Praxiteles, excavated in Olympia; 11-Statue of Nike by Paenion; 12-The Acropolis and the Parthenon

Notes: (a) Comandours states 229,240 printed of No. 8a. Kohl handbook excludes this information; (b) Kohl refers to varieties 10a, 11a, 12a. Comandours errs in stating that Nos. 10 and 12 exist without vertical perforations. He probably means pairs, imperforate between vertically; (c) each of the lepta values exists in a bright as well as a duller shade; (d) The small stamps of this issue were produced in counter sheets (half sheets of 150 stamps arranged in six (2 x 3) panes, each pane of 25 stamps (5 x 5). The panes were separated by horizontal and vertical gutters, the horizontal gutters having the same height as the stamps and printed with the heavy horizontal bars in color, exactly as were the French stamps of the period. The narrow vertical gutters did not have the Millesimes. The large horizontal format stamps were printed in sheets of 60 made up of six panes (2 x 3) of ten stamps each (2 x 5), the panes separated by gutters. Sheets of the large vertical format stamps of 60 stamps consisted of six panes (3 x 2) of ten stamps each (5 x 2); (e) It is not known for sure how often No. 2a occurred in a sheet. Robert O. Trueman in his translation of the Kohl Handbook believes it was but once. Copies exist, however of No. 2 where all or nearly all of the name at the bottom is missing. This could be due either to improper inking, plate wear or incomplete transfer to the plate of the bottom of the stamp; (f) Several values of this set have been forged, some more than once and exist, as well with forged cancellations on the forged stamps. In general, the designs are slightly smaller and coarser than the originals, the paper is often thin and usually yellowish instead of strong and white. Most of the forgeries are Perf 14 instead of the genuine comb 13x14 or 14x13. Stamps forged are the 40 1. and the 60 1. and the four drachma values; (g) During the Greco-Turkish War in 1897, when Greek troops retreated from Thessaly, several Greek postal depots or agencies, namely those at Larissa, Trikala, Agia and Karditsa, and stocks of this issue were seized. To avoid loss by having these stamps smuggled back into Greece where they might then be illegally used for franking purposes, the Greek P.O.D. ordered all of its stamp distributing depots to stamp their entire stock of sheets on the face side with their official handstamps before distribution of the sheets to the individual post offices. This order was changed a few days later making it imperative that every stamp in a sheet have a control mark before leaving the depots. These control stamps were usually the Greek coat of arms in a large double circle with inscriptions. They were large enough in diameter to cover four of the small stamps and at least two of the large stamps. Therefore, collecting pairs or blocks, as the case may be, showing the controls is advisable. Stamps overprinted with these controls on the face side received the regular hand stamps as they were used for franking. Only Athens did not comply with this order because, from the very start, the control was applied to the back side of the sheet in Athens. Shortly after this second order was issued, it was again changed (not more than 10 days later). The controls, particularly on single stamps, gave the appearance that the stamps had been cancelled. It was confusing. The new order amended the previous ones to the effect the control should be placed on the back of all stamp stocks and that, additionally, the individual

1. 1 pf on 6-4 pf blue green (No. 66)
 2. 16 pf opt +24 pf dk. olive green (No. 61)
 3. 24 pf opt +36 pf grey violet (No. 62)
 4. 25 pf on 12-88 pf brown carmine (No. 60)
 5. 30 pf on 6-4 pf violet (No. 59)
 6. 42 pf on 12-88 pf dark carmine (No. 67)
 7. 60 pf opt 6 pf violet (No. 57)
- Mi 7,17,19,20,21,23,25

GERMAN OCCUPATION OF DENMARK

1944, Fieldpost for the Danish Legion. Unw.; P 11. Typographed

1. +1 Kr. orange red

Design: Kronberg, sailboat in foreground

Mi III

GERMAN OCCUPATION OF CHANNEL ISLANDS--See Channel Islands

GERMAN OCCUPATION OF MACEDONIA

1944, October 28. Bulgarian "Work and Joy" stamps overprinted "Macedonia" in Cyrillic and 8, IX, 1944.

1. 15 s on 4 1 black brown (No. 37)
2. 20 s on 7 1 dark blue (No. 38)

Note: After Bulgaria entered the war against Germany, it was occupied by German troops and on September 8, 1944 declared independent. This Government stood until the occupying German troops were forced to depart on November 13, 1944. (b) Michel states 24,680 sets were issued Mi 6-7; Zu 6-7

GERMAN OCCUPATION OF SERBIA

1944, July 10. Yugoslavia Airmail Set of Sept. 22, 1937 overprinted "Serbien" diagonally reading downward, paper with colored network. Unw.; P 12K. Offset lithographed on chalk-surfaced paper, overprint typographed in carmine or brown carmine. The network color is below in parentheses.

1. 0.50 d dark brown (lt. red) C
2. 1 d dark green (lt. green) C
3. 5 d dark violet (lilac) C
4. 10 d lilac carmine (lt. red) CBR

Designs: 1, 3 - St. Naum Convent and sailboat on Lake Ochrida; 2, 4 - Port of Rab and sailboats in distance

Note: Michel states 30,000 sets issued.

Sc 2MCI-2, 2MCS-6; Gi M16-17, M20-21; Gi 16-17, 20-21; YT A1-2, 5-6; Zu 178-79, 182-83; Sa 1-2, 5-6

1944, July 28. As above, without network and overprinted with new value

5. 1 d on 10 d lilac carmine CBR

Note: Michel states 40,000 sets issued

Sc 2MCI1; Gi M26; M1 26; YT A11; Zu 188; Sa 11

GHANA

1959, October 15. West African Soccer Championships. Wmkd. Stars and G's multiple; P 14x14 (vert.), 14x14 (horiz.). Photogravure Harrison & Sons. Des. R. Lehmann (Nos. 1, 3), M. & G. Shamir (No. 2), W. W. Wind (No. 4) and K. Antubam (No. 5). Withdrawn Nov. 21, 1959.

1. 1/4 d red/yellow/blue/black
2. 1 d red/yellow/green/brown/lilac
3. 3 d red/yellow/green/black/blue
4. 8 d red/yellow/green/black/brown/blue
5. 2/6 d red/yellow/green/black

Designs: 1-Gold Cup and West African map; 2-Soccer players; 3-Flags in stadium and Goalkeeper making save; 4-Forward attacking goal; 5-"Kwame Nkrumah" Gold Cup

Sc 82-85; Gi 228-32; M1 63-67; YT 54-58

1960, August 15. Olympic Games. Wmkd. Stars and G's multiple; P 14x14 (Nos. 6-7), P 14x14 (Nos. 8-9). Des. A. M. Medina (Nos. 6-70 and W. W. Wind (Nos. 8-9). Photogravure Harrison & Sons.

6. 3 d blue/black/red/yellow/green
7. 6 d green/black/red/yellow/blue
8. 1/3 green/black/red/yellow/blue/brown
9. 2/6 green/black/red/yellow/blue/brown

Designs: 6,7-Olympic rings and torch upheld by hand; 8,9-Olympic rings on map of Africa, sprinter

Sc 82-85; Gi 249-52; M1 84-87; YT 75-78

GIBRALTAR

1953, October 19. Definitive. Wmkd. Multiple Crown & Script CA; P 12x13. Des. N. Cumming. Recess De La Rue.

1. 2 1/2 d bright carmine (3,406,333)

Design: "Sailing in the Bay", inset Elizabeth II

Sc 136; Gi 149; M1 138; YT 134; Zu 136

1960, Oct. ? Definitive. Wmkd. Multiple St. Edwards Crown CA; P 12x13. Des. M. Bonilla. Recess De La Rue.

2. 4 d turquoise/dp. red brown

Design: Catalan Bay, inset Elizabeth II

Note: Gibbons and Michel give first day as Oct. 29; Commonwealth states Oct. 15 was date of issue.

Sc 152; Gi 165; M1 154; YT 150; Zu 152

GREAT BRITAIN

1948, July 29. Olympic Games, London. Wmkd. Crown & GVR multiple; P 15x14 Des. Percy Metcalfe, C.V.O. (No. 1); Abram Games (No. 2); Stanley D. Scott (No. 3); Edmund Dulac (No. 4). Photogravure Harrison & Sons.

1. 2 1/2 d ultramarine (155,000,000) 3. 6 d red violet (24,000,000)
2. 3 d deep violet (32,000,000) 4. 1 s dk brown (32,000,000)

Designs: 1-Globe and laurel wreath, George VI and crown; 2-Allegory of "Speed", George VI and crown; 3-George VI, Olympic rings and crown; 4-Winged Victory over globe showing Great Britain, George VI and crown

Sc 271-74; Gi 495-98; M1 237-40; YT 241-44; Zu 231-34

1951, May 3. Definitive. Wmkd. Crown and large GVR; P 11x12. Des. Mary Adshedd. Recess Waterlow & Sons.

5. 5 s red

Design: Sailing before the White Cliffs of Dover, George VI and crown

Sc 287; Gi 510; M1 279; YT 257; Zu 246

1955, September 23. Definitive. Wmkd. St. Edward's Crown and E 2 R multiple; P 11x12. Des. Lynton Lamb, portrait of Queen Elizabeth II by Dorothy Wilding, Ltd. Recess Waterlow & Sons, Ltd. (through Dec. 31, 1957) and De La Rue Ltd. (after Dec. 31, 1957).

6. 2/6 black brown

a. De La Rue printing (7/17/58)

Design: Boat, Carrickfergus Castle

Note: WAT paper faintly cream or white, DLR paper white. WAT gutters between stamps are approximately 3.9mm (horiz.), 4.3mm (vert.). DLR gutters are 3.5mm and 4.5mm. WAT selvage markings small circles each

FRED HOWARD'S AUCTION

IMPORTANT

1. All bidding will be by mail; all bids are confidential. Lots will be sold to the highest bidder. In case of tie bids, the bid with the earliest postmark will be successful. MAIL YOUR BIDS EARLY.
2. Indicate all bids by lot number either on the bid sheet below or on a separate sheet of paper with your name and address printed plainly. Mail all bids to Fred Howard Sport Stamps-10613 Rochester Ave.-Los Angeles 24, Cal.. Please PRINT your name and address.
3. The closing date for this auction will be April 15, 1963. No late bids will be accepted under any circumstances.
4. Postage and insurance on all successful bids must be paid by the buyer with a minimum of 15¢; these charges will be added to each statement. Overseas bidders will be notified of their successful bids and asked to remit payment prior to shipment.
5. Make all checks and money orders payable to Fred Howard Sport Stamps.
6. All catalogue numbers and valuations without a special prefix are from Scott's catalogue, 1963 edition. Please note the following symbols:

*	Mint, unused	SS	Souvenir sheet
NH	Never hinged, original gum	Perf	Perforate
M	Minimum acceptable bid	Imperf	Imperforate
() Number of stamps in the set			
7. Bidding is open to all collectors.

LOT #	BID	LOT #	BID		LOT #	BID	LOT #	BID	
		NAME _____ ADDRESS _____ CITY & STATE _____							

1 - -Afghanistan	*483 NH	(1) M	1.00	68- -Czechoslovakia	*B137-9 (small thins but in excellent condition)	(3)	53.50
2 - -Afghanistan	*483 Imperf NH	(1) M	3.50	69- -Czechoslovakia	*B137-9 NH signed	(3)	53.50
3 - -Afghanistan	*483 Imperf SS NH	(1) M	3.50	70- -Czechoslovakia	*B140-3 (stains)	(4)	37.50
4 - -Afghanistan	*496-505,505a NH	(11)M	2.60	71- -Czechoslovakia	*B140-3	(4)	37.50
5 - -Albania	*616-20 Perf&ImpNH	(10)M	3.00	72- -Slovakia	*B21-4 NH	(4)	1.10
6 - -Albania	*616-20 2SS Perf & Imperf (imperf SS printed at angle)	(2) M	6.00	73- -Dominican Rep.	*326-8 NH	(3)	24.00
7 - -Algeria	*B47-50 NH	(4) M	1.45	73a -Dominican Rep.	*326-8 NH	(3)	24.00
8 - -Argentina	*697 NH	(1)	2.50	74- -Dominican Rep.	*474-8, C97-9 NH	(8)	1.75
9 - -Australia	*277,286,288-91 NH	(6)	3.50	75- -Dominican Rep.	*474-8, C97-9 Imperf	(8)	----
10- -Austria	*394-7 NH	(4)	3.85	76- -Dominican Rep.	*474-8, C97-9 SS NH	(4)	----
11- -Austria	*B138-41	(4)	21.25	77- -Dominican Rep.	*479-83, C100-2 NH	(7)	1.71
12- -Austria	*B179-83 NH	(5)	4.50	78- -Dominican Rep.	*479-83, C100-2 Imp	(7)	----
13- -Austria	*B224 block 4	(4)	1.80	79- -Dominican Rep.	*484-8, C103-5 NH	(8)	1.71
14- -Austria	*B277	(1)	5.00	80- -Dominican Rep.	*484-8, C103-5 Imp	(8)	----
15- -Austria	*B277 block 4 NH	(4)	20.00	81- -Dominican Rep.	*484-8, C103-5 SS	(4)	----
16- -Austria	*C46 NH	(1)	22.50	82- -Ecuador	*C65-9 NH	(5)	13.50
17- -Belgium	*B48-50 NH	(3)	1.50	83- -Egypt	*292-4,294a NH	(4)	3.53
18- -Belgium	*B482a SS NH	(1)	6.00	84- -Finland	*354-5	(2)	1.00
19- -Belgium	same as above 2 small SS black border NH	(2)	----	85- -Finland	*B31-3 NH	(3)	4.75
20- -Bermuda	*109 NH	(1)	6.00	86- -Finland	*B110-3 NH	(4)	1.35
21- -Bermuda	*109	(1)	6.00	87- -France	*198-201 (off center)	(4)	3.68
22- -Bolivia	*157	(1) M	.25	88- -France	*322	(1)	1.00
23- -Bolivia	*352-8, C150-6	(14)	3.63	89- -France	*700-5 NH	(6)	7.30
24- -Bolivia	*357a&b-358a&b, *C155a&b-156a&b	(8)	14.20	90- -France	*801-4 NH	(4)	2.15
25- -Brazil	*C78-9 NH	(2)	1.30	91- -Germany	*486-9	(4)	1.75
26- -Bulgaria	*237-43	(7)	28.65	92- -Germany	*813-16 block 4NH	(16)	2.96
27- -Bulgaria	*352-6	(5)	3.95	93- -Germany	*B79-81 NH NG	(3)	5.75
28- -Bulgaria	*578-82	(5)	1.55	94- -Germany	*B79-81 block 4 NH	(12)	23.00
29- -Bulgaria	*578-82 block 4 NH	(20)	6.20	95- -Germany	*B82-9 NH	(8)	12.25
30- -Bulgaria	*603-6 block 4 NH	(16)	2.24	96- -Germany	*B90 SS NH	(1)	1.00
31- -Bulgaria	*940-5 NH	(6)	1.10	97- -Germany	*B90 SS NH	(1)	1.00
32- -Bulgaria	*1094 Perf & Imperf	(2)M	.50	98- -Germany	B90 SS Munich Riems cancel NH	(1)	1.00
33- -Bulgaria	*1113-24 Pf & ImpNH	(12)	3.71	99- -Germany	*B91-2 SS	(2)	12.00
34- -Bulgaria	*1157-62 Perf & Imperf & SS NH	(13)M	3.00	100 -Germany	B91-2 SS special cancel NH	(2)	12.00
35- -Canada	*158 thin marks	(1)	9.50	101 -Germany	*B105 SS NH	(1)	7.00
36- -Canada	*216	(1)	2.00	101a -Germany	*B105 SS	(1)	7.00
37- -Cayman Islands	*89,93,105,110	(4)	4.95	102 -Germany	*B119	(1)	10.00
38- -Central Africa	*C4	(1)	2.50	103 -Germany	*B134-6 (spot B134)	(3)	3.75
39- -Chad	*C1 NH	(1)	2.50	104 -Germany	B134-6 on souvenir card with spec.cancel	(1 on 3stamps)	(3) ----
40- -China (Formosa)	*1098-9 NH	(2)	12.50	105 -Germany	same as above w/ 3 cancels	(3)	----
41- -China (Formosa)	*1284-9 block 4 NH	(24)	4.80	106 -Germany	*B141-3	(3)	10.00
41a -Colombia	445-7	(3)	3.80	107 -Germany	B141-3 souvenir card	(3)	----
42- -Colombia	*543-4 NH	(2)	7.00	108 -Germany	*B142	(1)	3.75
43- -Colombia	543-4	(2)	5.00	109 -Germany	*B144	(1)	4.50
44- -Congo	*C1 NH	(1)	2.50	110 -Germany	*B145	(1)	6.00
45- -Costa Rica	*201-8	(8)	60.75	111 -Germany	*B172	(1)	1.10
46- -Costa Rica	*201-8	(8)	60.75	112 -Germany	*B173	(1)	4.50
47- -Costa Rica	*B2-7	(6)	22.50	113 -Germany	*B191-3 NH	(3)	2.45
48- -Costa Rica	*C121-3	(3)	4.25	114 -Germany	*8NB5-6	(2)	3.00
49- -Costa Rica	*C121-3 NH	(3)	4.25	115 -Germany	*9NB1-3	(3)	7.75
50- -Costa Rica	*C145-7	(3)	3.75	116 -Germany	*9NB102	(1)	3.00
51- -Costa Rica	*C145-7 NH	(3)	3.75	117 -German Dem. Rep.	*51-2	(2)	1.15
52- -Costa Rica	*C283-8 NH	(6)	2.86	118 -German Dem. Rep.	*76-7	(2)	1.20
53- -Costa Rica	*C303-12 NH	(10)	7.35	119 -German Dem. Rep.	*94-5	(2)	1.00
54- -Costa Rica	*C313 2 SS	(2) M	2.50	120 -German Dem. Rep.	*307-8 block 4 NH	(8)	1.08
55- -Cuba	*299-303 NH	(5)	6.80	121 -Ghana	*61-5 NH	(5)	1.51
55a -Cuba	*463-5, C44-6, E14NH	(7)	6.80	122 -Ghana	*61-5 block 4 NH	(20)	6.04
55b -Cuba	*463-5, C44-6, E14 presentation sheet	(1)	----	123 -Ghana	*82-5 NH	(4)	1.32
56- -Cuba	*463-5, C44-6, E14NH	(7)	6.80	124 -Gold Coast	*140 NH	(1)	1.75
57- -Cuba	*637-40, C212-3, *C213a NH	(7)	2.16	125 -Greece	117-25	(9)	14.55
58- -Cuba	*C158-61 NH	(4)	2.20	126 -Greece	*117-28 off center	(12)M	140.00
59- -Czechoslovakia	*187-90 NH (crease in 1k)	(4)	8.15	127 -Greece	123 signed NH	(1)	1.35
60- -Czechoslovakia	*796-800 NH	(5)	1.75	128 -Greece	124 signed NH	(1)	5.50
61- -Czechoslovakia	*839-43	(5)	1.25	129 -Greece	125 NH	(1)	4.50
62- -Czechoslovakia	*897-902 NH	(7)	1.69	130 -Greece	126 (repaired poor condition on back-front seems fine)	(1)	20.00
63- -Czechoslovakia	*965-9 NH	(5)	2.50	131 -Greece	126 NH	(1)	20.00
64- -Czechoslovakia	*967-9 NH	(3)	1.50	131a -Greece	*159-63	(5)	102.00
65- -Czechoslovakia	*967-9 block 4 NH	(12)	6.00	132 -Greece	160 NH	(1)	12.50
66- -Czechoslovakia	*1023-9 NH	(7)	1.63	133 -Greece	184-94	(11)	17.90
67- -Czechoslovakia	*1091-6 NH	(6)	1.44				

134 -Greece	*381(off to left) (1)	10.00	194a-Japan	*589-90 sheet 20 NH(20)	11.00
135 -Greece	*421-4 NH (4)	2.35	194b-Japan	*602-3 sheet 20 NH(20)	7.00
136 -Greece	*421-4 block 4 NH (16)	9.40	195 -Japan	*631 block 4 NH (4)	1.20
137 -Greece	*427-36 NH (10)	24.25	196 -Japan	*B12-4 3 sheets of	
138 -Greece	*677-87 NH (11)	4.27		20 NH (60)M	4.00
139 -Greece	*677-87 block 4 NH(44)	17.08	197 -Japan	*B15-7 3 sheets of	
140 -Greece	*690 block 4 NH (4)	2.80		20 NH (60)M	3.50
141 -Greece	*C38-47 (10)	23.65	198 -Japan	*B18-20 3 sheets	
142 -Guatemala	*355-9 NH (5)	3.45		of 20 NH (60)M	3.50
143 -Guatemala	*C158-62 NH (5)	11.50	198a-Jugoslavia	*300-4 NH (5)	3.55
144 -Guatemala	*C171-6 (6)	13.75	199 -Jugoslavia	*365-8 (4)	1.55
145 -Guatemala	*C188-96 (9)	13.83	200 -Jugoslavia	*480-3 NH (4)	1.26
146 -Guinea	201-2, C24-6 on FDC (1) M	17.00	201 -Jugoslavia	*480-3 block 4 NH (16)	5.04
	same as above (1) M	17.00	202 -Jugoslavia	*547-54 (8)	2.81
147 -Guinea	*201-2, C24-6 NH (5) M	17.00	203 -Jugoslavia	*564-71 NH (8)	2.70
148 -Guinea	*421-3, C115-8 NH (7)	3.03	204 -Jugoslavia	*B26-31 NH (6)	6.50
149 -Haiti	*421-3, C115-8 block of 4 NH (28)	12.12	205 -Jugoslavia	*B40-2 (3)	5.75
150 -Haiti	421-3, C115-8 block of 4 NH (28)	8.64	206 -Jugoslavia	*B43-5 (3)	6.25
151 -Haiti	*451, C148-50 NH (4)	10.25	207 -Jugoslavia	*B62-5 NH (4)	1.45
152 -Haiti	*462-5, C145-7 NH (7)	1.92	208 -Jugoslavia	*B62-5 block 4 NH (16)	5.80
153 -Haiti	*462-5, C145-7 SS NH(1) M	3.00	209 -Jugoslavia	*B66-9 (4)	2.65
154 -Haiti	*B1, CBL-2 NH (3)	75.00	210 -Jugoslavia	*B70-3 (4)	3.60
155 -Haiti	*B18-9, CB28-9 NH (4)	1.80	211 -Jugoslavia	*B94-7(few stains) (4)	2.00
156 -Haiti	*1057-61, C123-7 NH(10)	3.08	212 -Jugoslavia	*C48-9 NH (2)	3.65
157 -Hungary	*1160-7 NH (8)	1.55	213 -Korea	*85-6 NH (2)	40.00
158 -Hungary	*1203-9 NH (7)	1.41	214 -Korea	*229-30 NH (2)	1.65
159 -Hungary	*1301-6, B217 Perf & Imperf NH (14)M	8.00	215 -Korea	*294, 294a NH (2)	1.20
160 -Hungary	*1326-35, B218 NH (11)M	1.10	216 -Korea	*309-10, 310a NH (3)	3.74
161 -Hungary	*1326-35, B218 SS Perf & Imperf (2) M	7.50	217 -Lebanon	*18-21 (4)	7.00
162 -Hungary	*1403-5, B219 Perf & Imperf NH (8) M	2.40	218 -Lebanon	*45-8 (4) M	7.00
163 -Hungary	*1406-12 Perf & Imperf NH (14)M	6.45	219 -Lebanon	*C49-56 (8)	19.40
164 -Hungary	*B77-9 (3)	1.80	219a-Lebanon	*C49-56 (8)	19.40
165 -Hungary	*B80-7 NH (8)	9.50	220 -Lebanon	*C49, 51, 53 (3)	1.75
166 -Hungary	B80-7 (8)	9.50	221 -Lebanon	*C200-3, C205 (5)	2.75
167 -Hungary	*B80-7 NH (8)	9.50	222 -Liberia	*347-9, C88-90 NH (6)	1.60
168 -Hungary	*C128 NH (1)	1.75	223 -Liberia	*347-9 trial color proof NH (3)	----
169 -Hungary	*C158-65 NH (8)	1.98	224 -Liberia	*C88(2) *C90 (2)	----
170 -Indo-China	*241-2 NG NH (2) M	.80		trial color proofs of different color	----
171 -Indo-China	*241-2 block 4 NG (8) M	3.20	225 -Liberia	*358-61, C104-6 NH (7)	4.70
172 -Indo-China	*241-2 overprint NG NH (2) M	1.75	226 -Liberia	*390-2, C126-7 NH (5) M	2.10
173 -Indo-China	*241-2 block 4 NG overprint NH (8) M	7.00	227 -Liechtenstein	*277-80 (4)	6.60
174 -Iran (Persia)	*978-82 NH (5)	6.60	228 -Liechtenstein	*289-92 NH (4)	3.50
175 -Iran (Persia)	*1047 (1)	4.00	229 -Liechtenstein	*297-300 NH (4)	3.20
175a-Iran (Persia)	*1047 NH (1)	4.00	230 -Liechtenstein	*308-11 NH (4)	3.50
176 -Iran (Persia)	*1133 NH (1)	1.00	231 -Liechtenstein	*320-3 NH (4)	2.25
177 -Israel	*37 NH (1)	5.50	232 -Lithuania	*B43-6 (4)	5.75
178 -Italy	*306-9 block 4 NH (16)	9.00	232a-Lithuania	*B43-6 NH (4)	5.75
179 -Italy	*324-8 (5)	20.90	233 -Lithuania	*B47-50 (4)	11.00
180 -Italy	*574-6 NH (3)	7.50	234 -Lithuania	*B52-4 (3)	7.75
181 -Italy	*705-8 (4)	3.50	234a-Lithuania	*B52-4 (3)	7.75
182 -Italy	*773-7 NH (5)	1.30	235 -Luxembourg	*280-5 (6)	12.90
183 -Italy	*062-5 (4)	7.65	236 -Mauritania	60 Olympic I NH (2) M	2.70
184 -Italy	*062-5 (4)	7.60	237 -Mauritania	same block 4 NH (8) M	10.80
185 -Italian Colonies	*46-50 (5)	30.50	238 -Mauritania	same II NH (2) M	.75
186 -Italian Colonies	*C29-35 NH (7)	35.55	239 -Mauritania	same II block 4 NH(8) M	3.00
187 -Japan	*397-400 NH (4)	3.60	240 -Mexico	*767 NH (1)	1.50
187a-Japan	*412 SS of 38 stamps plus 2 tabs (5)	13.30	241 -Monaco	*176 (1)	20.00
188 -Japan	*417-21 NH (5)	3.95	242 -Monaco	*204-8 NH (5)	1.28
189 -Japan	*469-73 NH (5)	1.95	243 -Monaco	*295-300 NH (6)	1.33
190 -Japan	*505-8 NH (4)	13.00	244 -Monaco	*363-4 NH (2)	1.00
191 -Japan	*505-8 sheet 20 NH(20)	65.00	245 -Monaco	*365 NH (1)	1.65
192 -Japan	*511-2 (2)	1.50	246 -Monaco	*454-9 NH (6)	1.86
192a-Japan	*547-8 sheet 20 (20)	7.00	247 -Monaco	*C36-9 (4)	11.00
193 -Japan	*567-8 (2)	1.10	248 -Mongolia	60 Olympic (8)	----
193a-Japan	*567-8 sheet of 20 (small thin) (20)	11.00	249 -Mongolia	Chile Soccer NH (5)	----
194 -Japan	*589-90 NH (2)	1.10	250 -Newfoundland	*64, 67, 71 (3)	6.20
			251 -Newfoundland	*C14 (1)	2.75
			252 -New Zealand	*B11-2 NH (2)	2.00
			253 -New Zealand	*B18-21 NH (4)	1.75
			254 -New Zealand	*B18-21 block 4 NH(16)	7.00
			255 -Netherlands	*B25-32 (8)	19.40
			256 -Netherlands	*B296-300 NH (5)	1.70
			257 -Netherlands	*B326-30 NH (5)	1.23
			258 -Nether.Antilles	*B28-30 NH (3)	1.20
			259 -Nether.Antilles	*B28-30 block 4 NH(12)	4.80
			259a-Nether.Antilles	*B10-14 NH (5)	5.75

260 -Nicaragua	*717-29 NH	(13)	6.99	323 -Russia	*2300-4 NH	(5)	1.17
261 -Nicaragua	*717-29, C296-308 set of 26 SS NH	(26)	145.00	324 -Russia	*2359-68 NH	(10)	1.77
262 -Nicaragua	*C296-308 NH	(13)	15.33	325 -Russia	*2369 NH	(1)	1.00
263 -Nicaragua	*C296-308 SS NH	(13)	95.00	326 -Russia	*2369 block 4 NH	(4)	4.00
264 -Nicaragua	*RA55a-58a NH	(8)	2.40	327 -Saar	*B67-8	(2)	10.00
265 -Nicaragua	*RA58b NH	(1)	3.50	328 -Saar	*B89-90 NH	(2)	4.50
266 -Norway	*259-66 NH	(8)	1.38	329 -Salvador	*543-7	(5)	42.00
267 -Panama	*430-32, C224-6 NH	(6)	2.19	330 -San Marino	*327-34 NH	(8)	8.56
268 -Panama	*430-32, C224-6 block 4 NH	(24)	8.76	331 -San Marino	*327-34 block 4 NH	(32)	34.24
269 -Panama	*433-4, C234-7 NH	(6)	1.96	332 -San Marino	*345-54 NH	(10)	4.41
270 -Panama	*433-4, C234-7 Imperf wide margins NH	(6)	----	333 -San Marino	*345-54 block 4 NH	(40)	17.64
271 -Panama	*C237a NH	(1)	3.00	334 -San Marino	*355 NH	(1)	6.00
272 -Panama	*C43-7	(5)	8.00	335 -San Marino	*355 SS NH of 4	(1)	M 20.00
273 -Panama	*C47a	(1)	10.00	336 -San Marino	*358 NH	(1)	1.50
274 -Panama	*C43-7, C47a mounted on pages	(6)	18.00	337 -San Marino	*364-72, C95	(10)	13.52
275 -Paraguay	*556-9, C262-4 NH	(7)	1.56	338 -San Marino	*427-32, C101 NH	(7)	3.60
276 -Paraguay	*556-9, C262-4 Imperf top sheet margins	(7)	RARE	339 -San Marino	*C90 SS of 6 NH	(1)	66.00
277 -Paraguay	*C264a SS Imperf NH	(1)	----	340 -San Marino	*C93-4 NH	(2)	3.50
278 -Paraguay	*605-9, C301-3 NH	(8)	M 3.50	341 -San Marino	*C93-4 block 4 NH	(8)	14.00
279 -Paraguay	*605-9, C301-3 Imperf NH	(8)	M 3.50	342 -San Marino	*C96 NH	(1)	5.00
280 -Paraguay	*605-9, C301-3 SS Imperf NH	(4)	M 13.00	343 -Somalia	*221-7, C54-6 NH	(10)	2.23
281 -Peru	*C78-81	(4)	26.00	344 -Surinam	*B55-7 NH	(3)	14.00
282 -Peru	*C81a NH	(1)	30.00	345 -Surinam	*B75-9 NH	(5)	2.25
283 -Peru	*C78-81 Melbourne overprint NH	(4)	----	346 -Surinam	*B75-9 block 4 NH	(20)	9.00
284 -Peru	*C81a Melbourne overprint NH	(1)	----	347 -Sweden	*444-8 NH	(5)	1.52
285 -Peru	*C172-3 NH	(2)	1.50	348 -Switzerland	*B170-3 NH	(4)	1.20
286 -Peru	*C172-3 block 4 NH	(8)	6.00	349 -Switzerland	*B170-3 block 4 NH	(16)	4.80
287 -Peru	*C172-3 SS Imperf	(1)	M 1.40	350 -Switzerland	*B191-5 NH	(5)	3.00
288 -Philippines	*821-2, C85-6 NH	(4)	1.16	351 -Switzerland	*B191-5 block 4 NH	(20)	12.00
289 -Poland	*306-7 NH	(2)	3.50	352 -Switzerland	*B201-5 NH	(5)	2.10
290 -Poland	*557, B86-7 NH	(3)	1.05	353 -Switzerland	*B201-5 block 4 NH	(20)	8.40
291 -Poland	*624-7 NH	(4)	1.77	354 -Syria	*133-6	(4)	6.00
292 -Poland	*628-32 NH	(5)	1.50	355 -Syria	*133-6	(4)	6.00
293 -Poland	*628-32 block 4 NH	(20)	6.00	356 -Syria	*166-9	(4)	6.00
294 -Poland	*699-704	(6)	2.10	357 -Trieste A zone	*115-7	(3)	5.25
295 -Poland	*699-704 block 4 NH	(24)	8.40	358 -Trieste B zone	1-3	(3)	5.25
296 -Poland	*750-6	(7)	1.97	359 -Trieste B zone	3a	(3)	6.00
297 -Poland	*750-6 block 4 NH	(28)	7.88	360 -Trieste B zone	*42-7	(6)	3.35
298 -Portugal	*749-50 NH	(2)	4.50	361 -Trieste B zone	*42-7 block 4 NH	(24)	13.40
299 -Portugal	*RA14 NH off center	(1)	2.00	362 -Trieste B zone	*51-6	(6)	4.20
300 -Portugal	*RA14 block 4 NH	(4)	8.00	363 -Trieste B zone	*51-6 block 4 NH	(24)	16.80
301 -Portugal	*RAJ5 off center NH	(1)	2.00	364 -Trieste B zone	*79-82	(4)	1.65
302 -Portugal	*RAJ5 block 4 NH	(4)	8.00	365 -Trieste B zone	79-82	(4)	1.65
303 -Romania	*768-72	(5)	1.15	366 -Turkey	*855-8	(4)	5.65
304 -Romania	*1034-5	(2)	1.05	367 -Turkey	*922-7 NH	(6)	1.75
305 -Romania	*1326-30 Imperf strip NH	(2)	M 4.00	368 -Turkey	*986-9 NH	(4)	7.25
306 -Romania	*1331-6	(6)	M 1.00	369 -Turkey	*1217-8 block 4 NH	(8)	3.80
307 -Romania	*1337-8	(2)	7.00	370 -Turkey	*1160-2 NH	(3)	2.50
307a -Romania	*B26-30	(5)	2.75	371 -Uruguay	*282-4 NH	(3)	15.00
307b -Romania	*B44-9 NH	(6)	6.65	372 -Uruguay	*388-90 off center	(3)	12.00
307c -Romania	*B50-4 NH	(5)	10.25	373 -Uruguay	388-90 off center	(3)	12.00
308 -Romania	*B69-76 NH	(8)	3.75	374 -Venezuela	*C189-97	(9)	16.70
309 -Romania	*B77-81 NH	(5)	4.00	375 -Yemen	*98-102 NH	(5)	2.34
310 -Romania	*B279-88	(10)	6.00	376 -Yemen	*98-102 Imperf pairs NH	(10)	M 65.00
311 -Romania	*B289	(1)	1.50				
312 -Romania	*C96-102 Perf and Imperf NH	(14)	M 5.00	377 - Packet 50 mixed sport stamps		M	.50
313 -Romania	*CBL3-4 NH	(2)	1.05	378 - Packet 100 mixed sport stamps		M	1.00
314 -Russia	559-68	(10)	27.70	379 - Packet approx. 300 mixed sport stamps catalogue valued over \$75.00		----	
315 -Russia	*659-65 NH	(7)	3.85				
316 -Russia	*693-7	(5)	2.60				
317 -Russia	*784-8 NH	(5)	4.10				
318 -Russia	*1253A-57	(6)	1.39				
319 -Russia	*1376-83 NH	(8)	3.27				
320 -Russia	*1415-9	(5)	3.95				
321 -Russia	*1617-8 NH	(2)	1.10				
322 -Russia	*2170 NH	(1)	1.00				

FRED HOWARD SPORT STAMPS
10613 Rochester Ave.
Los Angeles 24, Calif.

The following compilation gives the number of bids submitted on each lot (in parentheses) and the price realized for the lot:

501 (9) \$ 1.80	551 (6) \$.90	601 (5) \$37.50	651 (11) \$65.00	701 (7) \$ 4.25
502 (10) .75	552 (5) 2.10	602 No bids	652 (11) 7.00	702 (8) 4.25
503 (6) 2.00	553 (1) .30	603 No bids	653 (5) 5.75	703 (7) 3.75
504 (2) 1.45	554 (7) .30	604 (7) 12.00	654 (5) 5.75	704 (8) 6.75
505 (7) 1.00	555 (5) .50	605 (3) 1.00	655 (5) 5.75	705 (8) 7.00
506 (6) 2.10	556 (3) .50	606 (2) .75	656 (5) 5.75	706 (8) 7.00
507 (3) .70	557 (4) .65	607 (2) .80	657 (5) 5.75	707 (8) 7.00
508 (5) 1.50	558 (2) .60	608 (5) 6.00	658 (4) 7.00	708 (7) 7.00
509 No bids	559 (8) 39.00	609 (2) 1.00	659 (6) 75.00	709 (10) 6.00
510 (6) .45	560 (4) 2.00	610 (3) 6.25	660 (7) 4.75	710 (8) 5.25
511 (4) .40	561 (2) .70	611 (3) 1.15	661 (8) 3.75	711 (7) 5.25
512 (3) 1.60	562 (4) 1.20	612 (3) 3.80	662 (7) 4.75	712 (7) 5.25
513 (5) 1.20	563 (3) 1.20	613 (4) 10.00	663 (4) 20.00	713 (7) 5.25
514 (7) 5.65	564 (4) 9.10	614 (4) .75	664 (7) 6.00	714 (7) 5.25
515 (6) 1.75	565 (17) 9.00	615 (3) .85	665 (6) 5.25	715 (12) 8.00
516 (6) 9.65	566 (18) 8.75	616 (1) .25	666 (6) 5.25	716 (9) 12.25
517 (5) .40	567 (7) 3.85	617 (9) 5.75	667 (6) 5.25	717 (7) 5.25
518 (2) .50	568 (6) .40	618 (3) 3.00	668 (9) 6.00	718 (8) 4.50
519 (4) 3.50	569 (6) .50	619 (5) 1.00	669 (4) 5.50	719 (9) 5.25
520 (4) 4.50	570 (6) .35	620 (3) .75	670 (6) 5.75	720 (10) 6.50
521 (9) 2.00	571 (5) 3.00	621 (3) 1.50	671 (5) 4.25	721 (8) 6.25
522 (5) 2.60	572 (3) 3.75	622 (1) 1.00	672 (5) 5.50	722 (8) 6.50
523 (3) 3.00	573 (1) 2.25	623 (3) .85	673 (6) 6.50	723 (6) 5.00
524 (9) 4.50	574 (8) 2.75	624 (4) 3.25	674 (4) 5.25	724 (5) 4.25
525 (5) 4.10	575 (5) 2.30	625 (3) 1.00	675 (8) 6.50	725 (5) 4.25
526 (8) 21.50	576 (4) 2.25	626 (5) 1.10	676 (7) 5.25	726 (7) 4.25
527 (7) 3.50	577 (4) 2.25	627 (3) 4.50	677 (7) 5.50	727 (7) 5.25
528 (6) 3.95	578 (7) 2.25	628 (4) 2.25	678 (15) 20.00	728 (7) 4.50
529 (4) 3.85	579 (6) 6.00	629 (2) .55	679 (4) 4.25	729 (8) 5.25
530 (7) 6.50	580 (7) 4.35	630 (2) .50	680 (5) 3.25	730 (6) 5.25
531 (11) 72.00	581 (6) 3.80	631 (1) 1.00	681 (6) 4.75	731 (5) 2.75
532 (8) 4.00	582 (4) .60	632 (7) 7.35	682 (8) 4.75	732 (4) 4.25
533 (4) 1.50	583 (4) 2.50	633 (4) 1.75	683 (7) 6.75	733 (9) 15.50
534 (7) 4.00	584 (8) 1.25	634 No bids	684 (4) 4.25	734 (8) 10.50
535 (4) 3.35	585 (2) 1.50	635 (1) .25	685 (3) 2.75	735 (8) 9.50
536 (6) 1.00	586 (13) 7.50	636 (3) 1.00	686 (9) 6.50	736 (7) 6.25
537 (9) 29.00	587 (4) 6.50	637 (3) 1.20	687 (9) 4.50	737 (7) 7.25
538 (8) 30.00	588 (15) 8.25	638 (5) 1.00	688 (11) 4.75	738 (8) 8.25
539 (1) 1.95	589 (4) .60	639 (4) 1.50	689 (8) 4.75	739 (8) 8.25
540 (1) .30	590 (1) .20	640 (4) 2.50	690 (4) 3.00	740 (7) 6.50
541 (5) 1.00	591 (9) 8.90	641 (4) 5.65	691 (4) 3.75	741 (4) 2.75
542 (2) .90	592 (14) 28.20	642 (3) 6.50	692 (5) 6.50	742 (5) 4.25
543 (7) 1.95	593 (6) 1.05	643 (5) 1.50	693 (7) 4.75	743 (4) 2.75
544 (5) 9.00	594 (7) 3.60	644 (5) 2.00	694 (8) 6.75	744 (9) 6.50
545 (2) .90	595 (3) 1.70	645 (1) .65	695 (6) 4.75	745 (8) 12.50
546 (9) 1.95	596 (2) .60	646 (4) .75	696 (8) 4.75	746 (5) 6.00
547 (6) 1.75	597 No bids	647 (3) .85	697 (6) 4.75	747 (7) 13.00
548 (5) 1.20	598 (3) .30	648 (5) 4.35	698 (7) 6.50	748 (3) 4.00
549 (4) .55	599 (3) 1.65	649 (3) .85	699 (9) 6.00	749 (4) 4.00
550 (11) 3.30	600 (3) .75	650 (5) 4.25	700 (8) 4.25	750 (3) 4.25

CAN YOU HELP?

Illustrated below are three philatelic items whose owners would like information as to their identity and philatelic background. What are they and why were they printed? If you can supply any assistance, please communicate with the owners as listed below.



Travis L. Land
938 Essex St.
San Antonio 10
Texas



Robert M. Bruce
P. O. Box 18
West Point
New York



VARIETIES

Are you a specialist, looking for unusual items to complete your collection?
(not necessarily expensive ones). Please write us — we will gladly mail
you a selection or offers — no obligation. — easy terms.

HEADQUARTERS

← **FOR** →

ERRORS

We have now on hand a very large selection of AIRMAILS (Whole World)
and TOPICALS, U.N., I.G.Y., U.P.U., F.D.R., CENTENARY, ROTARY, IN-
VERTED CENTRES, SPORTS, OLYMPIC, SOUVENIR AND ARTISTS' D.P.
SHEETS, PROOFS.

S. SEREBRAKIAN Inc.

P. O. BOX 448

MONROE, N. Y.

Return Postage Guaranteed

by Brecht & Holer, Inc.
694 Third Avenue
New York 17, N. Y.

PRINTED MATTER

THIRD CLASS



Mr. Ernest A. Kehr
Stamp News Editor
NEW YORK HERALD TRIBUNE
230 West 41st Street
New York 36, New York