

# The World Of Chess Cancells

cc COMPILED by JOHN LA PORTA cc



Chess cancellations before 1970 have appeared in the following issues of JSP: 8:7:1-10, 8:11:7-9, 9:3:5-9, 9:4:10-13, 9:5:20-30, 10:3:1-3, 5-7, 10:4:19-22. All the previous listings appeared in alphabetical order by countries. Beginning with this issue, the listings have been changed to chronological order starting with the 1970 cancellations. Items not listed should be brought to the attention of the compiler.

Date listings are in European style, i.e., Day, Month & Year.

5-27.9.1970 - Siegen, West Germany. XIX Chess Olympiad. Machine cancel, black. (315)

10-18.4.1970 - Dresden, East Germany. Final German Team Championship. Black. (316)

1-16.5.1970 - Volklingen, West Germany. 50th Anniversary of SSV German Singles Championships. Black. (317)

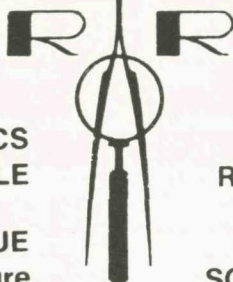
Same as (317). Machine cancel. Red. (318)



**Sign-Up a New Member!**

**SPORTS**

**OLYMPICS**



ALL 1976 OLYMPICS  
WILL BE AVAILABLE

SPORT STAMPS  
RETAIL-WHOLESALE

Try our NEW ISSUE  
SERVICE to make sure  
you get all Sports  
and Olympic Stamps  
issued.

P.O. BOX 487  
SOUTH LAGUNA, CAL.  
92667

APS SPI ATA SCC CPC

**ROLAND RINDSHOJ**

**P.O. BOX 487**

**SOUTH LAGUNA, CAL. 92667**





# SPORTS PHILATELISTS INTERNATIONAL

**PRESIDENT:** John La Porta, 3604 S. Home Ave., Berwyn, IL 60402  
**VICE-PRESIDENT:** Leonard K. Eichorn, 4331 Baintree Rd., University Hgts., Ohio 44118  
**SEC.-TREASURER:** William F. Brown, 1408 N. Fenton Ave., Indianapolis, IN 46219  
**DIRECTORS:** Robert M. Bruce, 1457 Cleveland Rd., Wooster, Ohio 44691  
Rex Haggett, 27 Meadow Close, Stratford-Upon-Avon, Warwickshire, ENG.  
George C. Kobylka, P.O. Box 159, Berwyn, IL 60402  
Sherwin D. Podolsky, 16035 Tupper St., Sepulveda, CA 91343  
**AUCTIONS:** Olech W. Wyslowsky, 55 Glenwood Ave., East Orange, NJ 07017  
**MEMBERSHIP:** Helen E. Long, 1133 Bryce Way, Ventura, CA 93003  
**SALES DEPT.:** Arlo Scoggin, 1345 Sleepy Hollow, Coshocton, Ohio 43812

Sports Philatelists International is an independent, non-profit organization dedicated to the study and collecting of postage stamps and related collateral material dealing with sports (including Olympics) and recreation and to the promotion of international understanding and good-will through mutual interest in philately and sports. Its activities are planned and carried on entirely by the unpaid, volunteer services of its members. All members in good standing receive the bi-monthly issue of Journal of Sports Philately. The dues for regular membership are \$5.00 per year with a one time admission fee of \$1.00. Membership applications may be obtained from Helen E. Long, 1133 Bryce Way, Ventura, CA. 93003.

## JOURNAL OF SPORTS PHILATELY

**EDITOR:** John La Porta, 3604 S. Home Ave., Berwyn, IL 60402  
**ASSOCIATE:** William F. Brown, 1408 N. Fenton Ave., Indianapolis, IN 46219  
**EDITORS:** Robert M. Bruce, 1457 Cleveland Rd., Wooster, Ohio 44691  
Barbara W. de Violini, P.O. Box 5025, Oxnard, CA 93030  
Edward B. Epstein, Bd. of Education, 33 Church St., Paterson, NJ 07505  
Joseph M. Lacko, 1031 W. Chestnut St., Union, NJ 07083  
Sherwin D. Podolsky, 16035 Tupper St., Sepulveda, CA 91343  
Joseph E. Schirmer, 7300 Blvd. East, North Bergen, NJ 07047  
Olech W. Wyslowsky, 55 Glenwood Ave., East Orange, NJ 07017  
**ART EDITOR:** Olech W. Wyslowsky, 55 Glenwood Ave., East Orange, NJ 07017  
**CIRCULATION:** William F. Brown, 1408 N. Fenton Ave., Indianapolis, IN 46219  
**PUBLISHER:** K-Line Publishing Co., Inc., P.O. Box 159, Berwyn, IL 60402  
**PUBLICITY:** Joseph E. Schirmer, 7300 Blvd. East, North Bergen, NJ 07047

## APS Affiliate Number 39

**ADVERTISING RATES:** FULL PAGE \$10.00; HALF PAGE \$6.00. A discount of 10% is allowed for six insertions of identical copy. Camera ready copy must be supplied by the advertiser. Publishing deadline is the first day of January, March, May, July, September and November.

**NOTE:** The opinions expressed in this publication are those of the individual authors and they do not necessarily represent those of the editor, the officers of SPI or the position of SPI itself. All catalogue numbers quoted in this publication are from Scott's Standard Postage Stamp Catalogue unless specifically stated otherwise. SPI and JSP do not guarantee advertisements, but accept copy in good faith, reserving the right to reject objectionable material.





**SCHACH** *stärkt den Verstand!*  
**G. HENKE & CO**

(338)

**SCHACH UND  
 ROULETTES**



(to be continued)

## “DIE OLYMPISCHEN SPIELE IM BLICKPUNKT DER PHILATELIE UND IHREN RANDGEBIETEN ”

*by Joseph Schirmer, Associate Editor*

I just had the pleasure of reviewing this fine handbook which covers all the Olympic Games from 1896 — 1944. Not only is the amount of technical information great and accurate, but the majority of the collecting fields are covered; stamps, covers, cancellations, labels & post cards.

Not only is this book of a convenient 6 x 8, but the printing and illustrations are very clear and the entire publication is most readable. What surprised me is the last section of this handbook, it is a very good chapter with illustrations of the various Olympic items issued during World War II by the Poles who were interned in the POW Camps. This is the first general Olympic handbook that I found this information included. A well thought-out index is included and a few index tabs are furnished for the buyer's convenience.

Heiko Volk, Jr, the author, has done a fine effort, and the cost of \$15 (postage & bank charges included) is well worth your including this book in your library.

\*\*\*\*\*

## Philatelic Handbook of Ice Hockey

*by Joseph Schirmer, Associate Editor*

Olech Wyslowsky, Art Director & Auction Manager for SPI has published his first edition of his new book entitled “Philatelic Handbook of Ice Hockey”.

This 43 page handbook contains a world of philatelic information covering ice hockey, and lists only the stamps specifically issued to commemorate ice hockey and the various related materials such as postal stationery, covers, cancellations, vignettes, etc. Twenty ice hockey conscious countries are covered and Wyslowsky wisely omits anything from the “sand dune countries”.

The layout is excellent with stamps shown at full size, covers at 67% of full size and overprints at double size.

Wyslowsky, who is a devoted New York Ranger ice hockey fan, has put over two years of study into this handbook and while he has a large soccer collection, ice hockey remains his first love.

This well written philatelic work, which is plastic spiral bound, and the standard 8½ x 11 format is available for \$8.00 postpaid from the author at 55 Glenwood Ave., East Orange, NJ 07017.

Wyslowsky plans to update his ice hockey handbook every second year and invites comments, suggestions and criticisms plus any additional material that may have been missed.

\*\*\*\*\*

# JOURNAL OF SPORTS PHILATELY

## INDEX - VOLUMES XIII & XIV

By Wm. F. Brown

Use of index and explanation of terms: See JSP 6:5:6.

### SECTION 1. Subjects

ALBANIA, Scott# 759 (Hockey - 1964)	13:3:2
ARGENTINA	
Sports Postmarks from Argentina, 1967-8 (Wyslowsky)	14:1:11-12
ATHLETIC MEETS (other than Olympic)	
Boating - Ohio River race cancels, 1974	13:2:12
Sailing - 1972 Singlehanded Transatlantic Race (Reiss)	13:1:2-3,5-6
Winter Sports - FIS 28th Nordic Championship (Lacko)	14:2:1-3
AUSTRIA	
Hurdling, 1970	13:4:20
Olympic Postal Stationery	14:6:7
Scott# 788 (Ice Hockey - 1967)	13:3:6
AUTOMOBILE	
Book review - "Les Meetings Automobiles #184", T. Wirth	14:6:1
Germany - Book review on post cards	14:2:16
Great Britain - Cancellation, 1975	13:6:17
USA - Cancellation, 1975	13:6:19
BALLOON FLIGHT	
Argentina - cancellation, 1967	14:1:11
Great Britain - cancellation, 1975	13:6:18
BASKETBALL	
Handbook of Basketball Stamps (Bruce): See Sec. 5	
Research Project on Basketball Philately (Bruce), Report #13	13:1:12
BAYERN	
Soccer bogus issue, 1972	14:1:12
BLACK BLOT - APS	
July, 1974	13:1:21
Sept, 1974	13:3:10-11
Sept, 1975	14:2:17
BOLIVIA	
Olympic overprints, Q30 (14:5:5)	14:6:12
BUSEK, Vaclav (Sports philatelist - author)	14:4:7
CANADA	
Hockey Hall of Fame - Post card	14:2:9
Olympic postage meter imprints, 1976	13:6:2
Olympic stamps - sculptures, 1976	13:6:1-2
Scott# 483 (Lacrosse - 1968)	13:3:5
CANCELLATIONS	
Automotive - Indy 500 Race, 1975	13:6:19
Bicycling - Portugal, 1974	14:1:1
Boating - Ohio River Flat Boat Mail Race, 1974	13:1:20
- Ohio River race cancel, 1974	13:2:12
Great Britain - British Sports cancels (Brit. Postmark Bull.)	13:4:22
" " " " " " "	13:5:10, 12
" " " " " " "	13:6:17-18
Great Britain - British Sports cancels, cont.	14:1:14-15
" " " " " " "	14:2:16
" " " " " " "	14:5:6
Gymnastics - First Sports cancel, Germany (1863), Q27 (14:2:12)	14:2:12
Italy - Sports handstamps, Jan-June '75 (Tassoni)	14:2:13-15
Japan - sport cancels, 1974	13:6:22
Olympic - Greek Olympic day, 1975	13:6:19
- Greece, Lighting of the Olympic Torch at Olympia	14:4:10
Skating - 1975 Speed Skating Nat'l Champ, Champ./Urbana	13:3:14
Stamp exhibition - SUNTRAPEX '75	14:3:14
Tennis - Clay Court Cancels (Yerkes)	14:3:1-3,5-9



USA - Wisconsin sport cancels, 1974	13:1:18
- " " " " "	13:2:5
Winter Sports - FIS 28th Nordic Champ. (Czech. - 1970)	14:2:2
<b>CURLING</b>	
British cancel, 1975	13:4:22
<b>CYCLING</b>	
Jose' Bento Pessoa (Naya)	14:1:1
<b>CZECHOSLOVAKIA</b>	
FIS 28th Nordic Champ., 1970 (Lacko)	14:2:1-3
Olympic postal stationery, 1972	14:6:7-8
Postal stationery-1934, Q16 (13:6:15)	13:6:15
Scott# 540-3 (Phys. Ed. - 1952), Q17 (13:6:15)	13:6:15
Scott# 897-902 (Sports - 1959), Q18 (13:6:15)	13:6:15
Scott# 897, 899 (Ice Hockey - 1959), Q23 (13:6:16)	14:1:16
Scott# 1220 (Olympic - 1964)	13:3:6
<b>DOMINICAN REP.</b> , Scott# C107 (Hockey - 1958)	13:2:2
<b>EGYPT</b> , Scott# 646-9 (Olympic - 1964)	14:1:10
<b>EIRE</b> , Scott# 90 (Hurley - 1934)	13:3:5
<b>ETHIOPIA</b> , Scott# 379 (Ganna - 1962)	13:3:5
<b>EQUATORIAL GUINEA</b> , (Sailing - 1972)	13:1:2-3,5-6.
<b>EQUESTRIAN</b> , Buzcashi sport	14:6:12
<b>FENCING</b>	
Come to the (1896) Nationals in New York (Tishman)	14:1:1-2
<b>FISHING</b> , Missouri Trout Stamp, 1974	13:4:10
<b>FIGURE SKATING</b> - Hungary, Scott# C158-165, 1955; Q19 (13:6:15)	13:6:15
<b>FIGI</b> , Scott# 201 (Hockey - 1963)	13:3:1
<b>FIP RULES</b> , Themabelfa & Thematic Collecting (Schirmer)	14:5:5
<b>GERMANY</b>	
Gymnastics - First sports cancel, 1863; Q27 (14:2:12)	14:2:12
Woman diver - Scott# B83, 1936; Q9 (13:4:18)	14:1:16
<b>GERMANY (EAST)</b> , Scott# B107 (Hockey - 1963)	13:3:3
<b>GERMANY (WEST)</b>	
Bogus Olympic issue, 1972	14:1:12
Hockey - Scott# B447, 1969	13:3:3
Olympic postal stationery, 1968	14:4:2
" " " " , 1972	14:5:1-3
" " " " , 1972	14:6:7
<b>GLIDER</b> - Argentina cancel, 1968	14:1:11
<b>GOLF</b>	
Great Britain - cancels, 1975	13:4:22
- " , 1975 & 1976	14:1:15
- " , 1976	14:5:6
<b>GREAT BRITAIN</b>	
British Sports Cancels (Brit. Postmark Bull.)	13:4:22
" " " " " "	13:5:10, 12
" " " " " "	13:6:17-18
" " " " " "	14:1:14-15
" " " " " "	14:2:16
" " " " " "	14:5:6
Olympic postal stationery, 1968	14:4:2-3
" " " " , 1972	14:6:7
<b>GREECE</b>	
Lighting of the Olympic Torch at Olympia (Drossos)	14:4:10
Farewell Olympic Torch Covers	14:1:16
Olympic Day cancel, 1975	13:6:19
Olympic Ode, Scott# 934 - 1968, Q12 (13:6:14)	13:6:14
<b>GYMNASTICS</b>	
First sports cancel, Germany 1863, Q27 (14:2:12)	14:2:12

## HOCKEY

Canada - Postal card for Hockey Hall of Fame

14:2:9

Hockey on Stamps (Malherbe)

13:2:1-3

" " " "

13:3:1-3,5-6

See also: Ice Hockey

HUNGARY, Scott# C158-165 (Fig. Skating - 1955)

13:6:15

HUNTING - Maryland Waterfowl stamps, 1975

13:4:10

## ICE HOCKEY

Czech. - Scott# 897,899 (1959), Q18 (13:6:15)

14:1:16

Ice Hockey Postal Stationery of USSR

14:2:5-9

INDIA, Scott# 443 (Hockey - 1966)

13:3:2

INDONESIA, Scott# 567 (Hockey - 1962)

13:2:2

## ITALY

Italian Sports handstamps (Jan-June, 1975) - Tassoni

14:2:13-15

## JAPAN

Hockey - Scott# 550 (1951)

13:2:1

- Scott# B26 (1963)

13:2:3

Mihon overprints, Q26 (14:1:10)

14:4:7-9

Olympic postal stationery, 1968

14:4:3,5-6

" " " , 1972

14:5:1

JUGOSLAVIA, Scott# 461-468 (Olympic - 1956)

14:5:5

## LABELS - See Vignettes

LAOS, Scott# 119 (Tikhy - 1965)

13:3:5

MACAU, Scott# 394 (Hockey - 1962)

13:2:2

Mc KENZIE, Robert Taft (Canada - sport sculptures)

13:6:1-2

METER FRANKING, Canada - 1976 Olympics

13:6:2

## MEXICO

A Conversation with Lance Wyman (Epstein), '68 Olympics

13:5:1-3,5-6

Hockey - Scott# 983, 1967

13:3:2

MONACO, Scott# C74 (Hockey - 1968)

13:3:2

## MOUNTAINEERING

British cancel, 1975

13:6:17

Vagmarken Mountaineering Club covers, 1974

13:1:21

MOZAMBIQUE, Scott# 427 (Hockey - 1962)

13:3:6

NETHERLANDS, Scott# B299 (Hockey - 1956)

13:2:1

O'CONNOR, W. Scott - fencing (US)

14:1:1-2

## OLYMPICS

Austria - Winter Olympic Service, 1976

13:6:18

Bolivia - overprints, Q30 (14:5:5)

14:6:12

Book Reviews: "Die Olympischen Spiele im Blickpunkt der  
Philatelie und ihren Randgebieten", H. Volk  
Olympische Spielen Munchen 1972 (Podolsky)  
Sport auf Briefmarken (Schirmer)

14:1:13

14:3:11-12

14:5:6

Canada - 1976 Olympic Games - sculptures

13:6:1-2

- Caravans carry Olympic message, 1976

13:6:18

Catalog - Trachtenberg, 1975-6

13:6:12

Czechoslovakia - Scott# 1220 (1964)

13:3:6

Egypt - Scott# 646-49, Q22 (13:6:16)

14:1:10

Finland - 1940 Helsinki, Q2 (13:3:9)

13:3:9

Germany - 1936 Scott# B83, Q9 (13:4:16)

14:1:16

- 1940 post card

14:4:10

- 1972 bogus issue

14:1:12

Graphic symbols, Q25 (14:1:10)

14:2:12

Greece - 1896 issue, Q1 (13:3:9)

13:3:9

- 1968 Scott# 934, Q12 (13:6:14)

13:6:14

- 1975 Olympic day cancel

13:6:19

Japan - 1964 event cancels, Q14 (13:6:14)

13:6:14

- Mihon overprints, Q26 (14:1:10)

14:4:7-9

Jugoslavia - Scott# 461-8, Q28 (14:2:12)

14:5:5

Lighting of the Olympic Torch at Olympia (Drossos)

14:4:10

Monaco - 1968 Scott# C74	13:3:2
Norway - 1952 Winter Games, Q7 (13:4:16)	13:4:18
Olympic Postal Stationery, Part 5 (Hammond)	14:4:1-3,5-7
" " " , Part 6 "	14:5:1-3
" " " , Part 7 "	14:6:7-8
Pakistan - 1969 Scott# 267-8	13:3:3
Panamanian Olympic Stamp "Transition" (Schirmer)	14:2:16-17
Philatelic Quiz (Epstein)	14:3:9-10,12
Philately and the Olympics (Schirmer)	14:6:10
Poison Gas and Olympic Stamps (Schirmer)	14:4:23-24
Russia - 1964, Scott# 2843-7, Q24 (14:1:10)	14:1:10
Rwanda - 1968 Scott# 254	13:3:2
Spain - 1968 Scott# 1511	13:3:6
Torch relay, Canada	14:1:16
Turkey - Scott# 1742, Q10 (13:4:18)	13:6:14
Uruguay - 1924 Games, Q21 (3:6:15)	13:6:15
USA - Guasti Giuliani and the 1932 L.A. Olympics (Podolsky)	13:1:1-2
Who needs the Olympics? (Will)	14:6:1
Wyman, Lance - A conversation with L. Wyman (Epstein)	13:5:1-3,5-6
- Graphic symbols, Q25 (14:1:10)	14:2:12
PAKISTAN	
Scott# 163,8 (Hockey - 1962)	13:2:3
Scott# 267-8 (Hockey - 1969)	13:3:3
PANAMA	
The Panamanian Olympic Stamp "Transition" (Schirmer)	14:2:16-17
PESSOA, Jose' Bento (F. Naya)	14:1:1
POLAND	
Olympic postal stationery	14:6:8
Scott# 602-4 (Sports-1953), Q20 (13:6:15)	13:6:15
PORTUGAL, Scott# 749-750 (Hockey - 1952)	13:3:6
POSTAL STATIONERY	
Canada - Hockey Hall of Fame	14:2:9
Czechoslovakia - Third Workers Olymp. 1934, Q16 (13:6:15)	13:6:15
Olympic Postal Stationery - Part 5 (Hammond)	14:4:1-3,5-6
- Part 6	14:5:1-3
- Part 7	14:6:7-8
USSR - Ice Hockey	14:2:5-9
POSTMARKS - See Cancellations	
REVIEWS	
Bildpostkartenkatalog-Automobil 1895-1970, W. Bernherd	14:2:16
Die Olympischen Spiele im Blickpunkt der Philatelie und ihren Randgebieten, H. Volk Jr. (Podolsky)	14:1:13
La Philatelie Thematique, F. de Troyer (Schirmer)	14:5:5
Les Meetings Automobiles #184, T. Wirth	14:6:1
Olympische Spelen Munchen, 1972 - Postzegel Katalogus met Randgebieten, L. Jonker (Podolsky)	14:3:11-12
Sport auf Briefmarken, M Krause & K. Weidman (Schirmer)	14:6:6
Trachtenberg, Henri - Sport/Olympiques & Scoutisme Cat/ 1975-6	13:6:12
ROMANIA	
Olympic Postal Stationery, 1964	14:4:1
" " " , 1972	14:5:1
" " " , 1972	14:6:7
ROWING - Japan 1974 cancel	13:6:22
RUSSIA	
Ice Hockey Postal Stationery	14:2:5-9
Olympic Postal Stationery, 1968	14:4:2-3
" " " , 1972	14:5:1
" " " , 1972	14:6:8
Scott# 2843-7 (Olympic, 1964), Q24 (14:1:10)	14:1:10
Scott# 2998 (Bandy, 1965)	13:3:5
RWANDA, Scott# 254 (Hockey - 1968)	13:3:2
SAILING	
British cancels, 1975	13:6:17-18
" " , 1975	14:1:14-15
" " , 1976	14:5:6



Japan - cancels, 1974	13:6:22
1972 Singlehanded Transatlantic Race (Reiss)	13:1:2-3,5-6
Tall Ship Races, 1974	13:1:21
SAN MARINO, Scott# 567 (Hockey - 1960)	13:2:2
SCOUTS	
British cancel, 1975	13:6:17
SUNTRAPEX '75	14:3:14
Trachtenberg Cat., 1975-6	13:6:12
SEALS, See Vignettes	
SHOOTING - Japan, 1974 cancel	13:6:22
SKATING - US cancel, 1975	13:3:14
SKIING	
Argentina - cancel, 1968	14:1:11
FIS 28th Nordic Championships (Lacko)	14:2:1-3
Japan - cancel, 1974	13:6:22
SNOWMOBILE - US cancel, 1974	13:2:5
SOCCER	
Bayern - bogus issue, 1972	14:1:12
Brazil - cancel, 1964; Q6 (13:3:9)	13:4:16
SPAIN	
Scott# 957,962 (Hockey - 1960)	13:3:6
Scott# 1511 (Olympic - 1968)	13:3:6
SPI	
Back-issues of SportsStamps and JSP	13:1:15
" " " "	14:3:11
Constitutional Amendment, Article VIII- Disbandment	13:6:20
Financial Report, Sept 1 '74 to Aug 31 '75	13:2:11
" " , Sept 1 '75 to Aug 31 '76	14:2:10
Guest Editorial (Schirmer)	14:5:7
Index to Vols. XI & XII - JSP	13:2:13-18
Permanent Membership Cards	14:6:10-11
Some-Mid-Summer Thoughts- A Guest Editorial (Bruce)	13:1:13-14
Sports Stamps for Investment? (Bruce)	13:6:11-12
Translation service - help!	13:3:6
STAMP EXHIBITION	
Argentina - cancellation	14:1:11-12
SUNTRAPEX '75	14:3:14
SWIMMING - Japan cancel, 1974	13:6:22
SWITZERLAND	
Sports issues among the Swiss Military Stamps of WW II (Ross)	13:3:7-9
TABLE TENNIS	
The Asian Table Tennis Championships (Hirasawa)	13:4:1-3,5-6
TARGAN, Selim Sirri - Turkey, Scott# 1742, Q10 (13:4:18)	13:6:14
TENNIS	
Argentina cancel, 1967	14:1:11
British cancel, 1975	13:6:17
Clay Court Cancels (Yerkes)	14:3:1-3,5-9
TRACK & FIELD - Austria, hurdling	13:4:20
TURKEY	
Olympic Postal Stationery, 1972	14:6:8
Scott# 1742 (Olympic), Q10 (13:4:18)	13:6:14
URUGUAY, Scott# 282-4 (Olympic), Q21 (13:6:15)	13:6:15-16
USSR - See Russia	
VIGNETTES	
ATA Seal (Sports), 1976	14:6:10
Diving/swimming, Estonia - Inquiry (13:4:12)	13:6:16
Gausti Giulii and the 1932 LA Olympics (Podolsky)	13:1:1-2
"Spartakiade", 1931 (Berlin)	13:1:18
WOMEN (Sports)	

Austria - hurdling	13:4:20
Germany - diver (1936), Q9 (13:4:18)	13:6:14
- " " " "	14:1:16

WYMAN, Lance

A Conversation with Lance Wyman (Epstein)	13:5:1-3,5-6
Use of Olympic graphic symbols, Q25 (14:1:10)	14:2:12

SECTION 2. - Checklists

BASKETBALL RESEARCH PROJECT - B. Bruce	13:1:12
CLAY COURT CANCELS - L. Yerkes	14:3:1-3,5-9
COMPETITIVE SPORTS ON STAMPS (Simplified) - B. Bruce	
Section # 11 - Greece to Yugoslavia	13:1
12 - Yugoslavia to Liechtenstein	13:2
13 - Liechtenstein to Mongolia	13:4
14 - Mongolia to Panama	13:5
15 - Panama to Poland	13:6
16 - Poland to Ras Khaima	14:1
17 - Ras Khaima to Russia	14:2
18 - Russia to Salvador	14:4
19 - Senegal to Sweden	14:4
20 - Sweden to Umm Al Qiwayn	14:5
21 - Umm Al Qiwayn to Yemen	14:6
22 - Yemen	14:6
HOCKEY ON STAMPS - W. A. Malherbe	13:2:1-3 13:3:1-3,5-6
NEW ISSUES COLUMN - B. W. de Violini	13:1:17-18 13:2:7 13:3:13-14 13:4:17 13:5:11 13:6:13
	-- 14:2:11 14:3:13-14 14:4:21-22 14:5:7-8 14:6:11
SPORTS AND RECREATION - B. Bruce	
1973 Supplement	13:1:7-11
1974 Supplement	13:6:5-9

SECTION 3. - Results of National & International Championships

F. I. S. - 28th Nordic Competition	14:2:2-3
------------------------------------	----------

SECTION 4. - Auctions & Realizations

SPI Auction Listings: May, 1975	13:4:13-16
July, 1975	13:5:6-9
May, 1976	14:4:11-20
Sept, 1976	14:6:2-3,5-6

SECTION 5. - Handbooks

BASKETBALL STAMPS - B. Bruce	
Addenda (1971-2)	13:4:7
Section #17 (1973)	13:4:8-10
Addenda (1947-73)	14:1:5-8
Section #18 (1974)	14:1:8-9
ADULT COMPETITIVE SPORTS ON STAMPS - B. Bruce	
Section #10 - Australia to Belgium	Section #15 - Bulgaria to Cambodia
11 - Belgium to Bolivia	16 - Cambodia to Cen.Afr.Rep.
12 - Bolivia to Brazil	17 - Cen.Afr.Rep. to Chad
13 - Brazil to Bulgaria	18 - Chad to China
14 - Bulgaria	19 - China to Colombia

# SECTION 6. - Concordance of Q & A.

## Lets Pool Our Olympic and Sports Knowledge (Epstein, ed.)

#	Question	Answer	#	Question	Answer
1	13:3:9	13:3:9	19	13:6:15	13:6:15
2	↓	13:3:9	20	↓	13:6:15
3		-	21		13:6:15
4		-	22	13:6:16	14:1:10
5	↓	-	23	↓	14:1:16
6		13:4:16	24		14:1:10
7		13:4:16	25		14:2:12
8	13:4:18	-	26	↓	14:4:7-9
9	↓	13:6:14, 14:1:16	27		14:2:12
10		13:6:14	28		14:5:5
11		-	29	14:4:7	-
12	13:6:14	13:6:14	30	14:5:5	14:6:12
13	↓	-	31	14:5:6	14:6:12
14		13:6:14	32	↓	-
15		-	33		-
16	13:6:15	13:6:15	34		-
17	↓	13:6:15	35	14:6:12	-
18		13:6:15, 14:1:16			

## MEMBERS BOURSE

Bourse rates are 2c per word with name and address free. Send ad and remittance to the editor. For payment under

\$1.00, please send mint commems. Address and closing dates on page 4

Pre-Olympic publicity rubberstamp cachets for the 1980 Lake Placid Olympic Winter Games are available at reasonable cost. Send SASE for illustrations of 9 different designs. Special cachets made to order - submit your design for cost estimate. John La Porta, 3604 S. Home Ave. Berwyn, IL 60402.

Wanted - "Golf" postmarks/cancellations, Meters, Postcards, wooden shaft golf clubs. Keith W. Nemmers, 8625 E. McDonald Dr., Scottsdale, AZ 85253.

WANTED: Material having to do with the sports of Volleyball and track and field. Mint stamps, FDC's, post cards, anything and everything. Send with price. Lt. Col. James W. Smith, 431 George Cross Drive, Norman Okla. 73069.

DOMINICAN REPUBLIC sports material for sale. SPECIAL: 643, Vertical pair, imperforate between: \$7.50. What other stamps and covers from this country do you need? Lt. Col. James W. Smith, 431 George Cross Drive, Norman, Okla. 73069.

Waterbound after BEPEX '77 — by Joe Schirmer, Associate Editor

Now when one leaves any sort of a philatelic show they never expect to get waterbound, but I am certain that if any of you SFI members would care to contact either of my friends Ed Parrasch or Ira Seebacher, you will hear a tale that will not only make you laugh but also make you realize the importance of proper road drainage.

Seems that after the judging last Thursday of the Bepex show; Ed was driving Ira home to the north of NYC--we here mention that it was raining terribly--we got over 2 inches in less than 5 hours, and Ira in showing Ed a quick and easy way home managed to get Ed into roads that were under water, results, a night spent in a nearby motel with not only the motel bill but also the towing bill and loads of wet clothes.

While we cannot control the weather, this story goes to prove that sometimes the longer way around is the better way--eh Ira??

Although this story is not philatelic it is related to philately and should provide you all with a chuckle.



by Barbara de Violini

Associate Editor

- ANTIGUA December 28, 1976. Outstanding achievement in Cricket. 50¢, Vivi Richards, batter, and Andy Roberts, bowler, two of Antiguas foremost cricket players. A S/S also exists. Designed by PAD Studio and printed by Questa Security Press.
- BANGLADESH November , 1976. XXI Olympic Games, Montreal. 25p, Hurdler; 30p, Runner; 1T, Pole Vaulter; 2.25T, Swimmer; 3.50T, Gymnast; 5T, Soccer game. Printed in lithograph by Asher & Co.
- BARBUDA December 28, 1976. XXI Olympic Games, Montreal. Overprints on Antigua Scott #431-37, 437a, showing a High Jumper, Boxer, Pole Vaulter, Swimmer, Cyclist, Runner and Shot Putter.
- CANADA September 17, 1976. 10¢, Iroquoi Ball Club.
- COMOROS ISLANDS March 30, 1976. XXI Olympic Games, Montreal. 20f, Athens, 1896; 25f, Runner; 40f, High Jumper & Paris, 1900; 75f, High Jumper; 100f, Gymnast and St. Louis, 1904; 500f, Gymnast; S/S, 400f, Montreal Stadium.
- FINLAND January 25, 1977. European Figure Skating Championship. 90mh, Skater. Designed by Torsten Ekstrom and printed by the Bank of Finnish Security Printing House in a quantity of 4,000,000.
- GABON July 27, 1976. XXI Olympic Games, Montreal. 100f, Runner; 200f, Soccer players; 260f, High Jumper. A S/S exists of all three stamps.
- GHANA February 1977. Montreal Winners. 7p, Shot Put, East Germany; 30p, Soccer, East Germany; 60p, Runner, Russia; 1d, Boxing, U.S. A S/S is overprinted the same.
- HUNGARY December 14, 1976. Montreal Winners. 40f, Weight Lifter and Wrestler; 60f, Kayak; 1ft, Gymnast; 4ft, Fencer; 6ft, Javelin Thrower; 20ft, S/S, Water Polo. Designed by J. Vertel and printed in photogravure by the Government Press, Budapest in a quantity of 357,000 perf and 9,500 imperf.
- IVORY COAST July 17, 1976. XXI Olympic Games, Montreal. 60f, Javelin Thrower; 65f, Runner.
- JAPAN March 1, 1977. World Figure Skating Championships, Tokyo. 50y, Ice Skater; 50y, Figure Skating Pair. Designed by Takao Yamanoughi. Printed in a quantity of 30 million of each.
- KUWAIT July 17, 1976. XXI Olympic Games, Montreal. 4f, Basketball, 8f, Runner; 10f, Judo; 15f, Handball; 20f, Gymnast; 30f, Water Polo; 45f, Soccer; 70f, Swimmers. Printed in lithograph in a quantity of 400,000.
- LIBYA October 6, 1976. 5th Arab Games, Damascus, Syria. 15d, 30d, 100d, showing the same design of a Pole Vaulter, Hurdler, Soccer player, Flame and the emblem of the games. There is also a S/S showing a Wrestler and the emblem.
- MEXICO August 24, 1976. 50th Anniversary of the Mexican Boy Scouts. 80c, Scout hat and emblem.
- MONACO May 3, 1977. X Ranier III Challenge Cup for Archery. 1.10, Archer; Designed by M. Forget.
- MONGOLIA November 30, 1976. Montreal Gold Medal Winners (2 or more). 10m, John Naber, U.S.; 20m, Nadia Команeci, Romania; 30m, Kornelia Ender, East Germany; 40m, Nitsou Tsukahara, Japan; 60m, Gregor Braum, France; 80m, Lasse Viren, Finland; 1T, Nikolai Andreanov, Russia. 4T, S/S, Ojdov, Mongolian Wrestler. Printed by the Banknote Printing Office, Budapest in a quantity of 250,000 stamps and 30,000 S/Ss.
- MOROCCO August 11, 1976. XXI Olympic Games, Montreal. 35f, Wrestler 40f, Cyclist; 50f, Boxers; 1d, Runner.
- NEW ZEALAND April 6, 1977. Education. 8c, Girls twirling hoops. Designed by A.G. Mitchell and printed by Harrison & Sons.
- PARAGUAY Montreal Winners. 1q, Nadia Команeci; 2q, Kornelia Ender; 3q, Luann Ryon; 4q, Jennifer Chandler; 5q, Shirley Babashoff; 10q, Christine Sluckelberger; 15q, Japanese Volleyball team; 20q, Annegret Richter. S/S, 25q, Overall Medal Record. S/S, 25q, Alwin Schockememler, Equestrian, and Bruce Jenner, Decathlon. The are surrounded by former U.S. Decathlon Gold Medal Winners.

**ROMANIA**

October 20, 1976. Montreal Winners. 20b, Grecu, Gymnast; 40b, Mens Fencing Team; 55b, Megeler, Javelin Thrower; 1.75L, Handball Team; 2.75L, Simon, Cutov, Dajinoiu, and Nostoc, Romanian Boxers; 3.60L, Berceanu, Jinga, Rusu, Codreanu, Morcov and Simon, Romanian Wrestlers; 5.70L, Comaneci and Ungureanu, Gymnasts. S/S, 10L, Diba, Canoist; S/S, 10L, Comaneci, Gymnast. Designed by Vladimir Stoiانov and printed in a quantity of 250,000 sets and 150,000 S/Ss. December 28, 1976. XXII Olympic Games, Moscow. 4k+2k, Passing of flame from Montreal to Moscow; 10k+5k, 16k, +6k, Emblems of the Moscow Games. S/S, 60k+30k. View of the Kremlin. Designed by N. Litvinov. The S/S by G. Komlev. August 1, 1976. XXI Olympic Games, Montreal. 20c, Soccer; 30c, Shooting; 50c, Canoe; 1F, Gymnast; 10F, Weight Lifter; 12F, Diver; 26F, Equestrian; 50F, Shot Putter. S/S, Hurdle Race. Designer was Oscar Bonnevalle. Printed by Heraclio Fournier.

**RUSSIA****RWANDA****SAMOA****SURINAM****SYRIA****TOGO****WALLIS & FUTUNA**

June 21, 1976. XXI Olympic Games, Montreal. 10s, Boxers; 12s, Wrestlers; 22s, Javelin Thrower; 50s, Weight Lifter. September 29, 1976. 50c, "Chess Players" from a painting by Q. Jan Telting.

1976. 5th Arab Games, Damascus. 5p, Soccer; 10p, Swimming; 25p, Runner; 35p, Basketball; 50p, Javelin Thrower. S/S, 100p, Steeplechase.

August 7, 1976. "Young Routy at Celeyron" fishing, from a painting by Toulouse Lautrec.

August 2, 1976. XXI Olympic Games, Montreal. 31F, Hammer Thrower; 39F, Diver.

## BECOME A LIFE MEMBER

# SPORTS

# OLYMPICS

# R R



**ALL 1976 OLYMPICS  
WILL BE AVAILABLE**

**Try our NEW ISSUE  
SERVICE to make sure  
you get all Sports  
and Olympic Stamps  
issued.**

**SPORT STAMPS  
RETAIL-WHOLESALE**

**P. O. BOX 487  
SOUTH LAGUNA, CAL.**

**92667**

**APS SPI ATA SCC CPC**

# ROLAND RINDSHOJ

## P.O. BOX 487

## SOUTH LAGUNA, CAL. 92667



# NEWS OF OUR MEMBERS

## NEW MEMBERS

980R Oddvar Lillebuen, Skavangerveien 16, N-3600 Kongsberg, NORWAY  
 981R John A. Dustin Jr, 820 West 79th Street, Indianapolis, IN 46260  
 982R David Posner, P.O.Box 564, Merrick, NY 11566  
 983R Warren B. Tews, 1411 E. Laflin Ave., Waukesha, WI 53186  
 984R Mark Sommer, 794 Arbor Road, Paramus, NJ 07652  
 985R Myrtis E. Herndon, P.O.Box 12, Hiram, Ohio 44234  
 986R Ward H. Nichols, 4203 Baits 1-Parker, 1230 Hubbard, Ann Arbor, MI 48109  
 987R Wm. C. Crowley, 103 Paul Revere Road, Needham, Mass. 02194

## MEMBERS DROPPED - NON-PAYMENT OF DUES

43C Anthony Benz	825R Jeff Louis	916R Joseph E. Full
45C Ronald B. Collins	835R Mrs Cathy Weiss	921R Mrs. Betty Dendys
139C Dr. Emil Quisen	845R Glenn C. Kuebeler	922R Miss Janet Koontz
166C Samuel Grosfeld	856R Miss Nancy McCormack	924R Daniel Gould
306R Richard W. Becker	859R Malcolm L. Westgarth	932R Donald Zimmerman
489R Jose Luis Mugica Uranga	864R Joseph Burgess Jr.	936R Charles Brooks
558R N. E. Grevett	868R Robert Menker	940R Rainer Martens
770R Donald Houghtalin	870R Henry Wojciechowski	941R Wm. G. Ward
781R Stanley J. Pisarczyk	875R William Nathans	948R Ted de Kousse
798R Francisco Naya	884R Alan Wyman	955R Jerold Daring
805R Ralph D. Mitchener	909R Neva List	960R J. V. Hamilton
	912R Carlton Ferris	

## BEPEX '77 by Joe Schirmer, Associate Editor

This show, which is one of the better and longer running in the northern NJ metropolitan area; is now a memory; SPI members managed to gather their share of awards in the special sports & Olympic section that was the brain-child of Ed Parrasch.

While this section was limited to 8 entries, your judges--Ira Seebacher and Joe Schirmer, found some rather interesting exhibits.

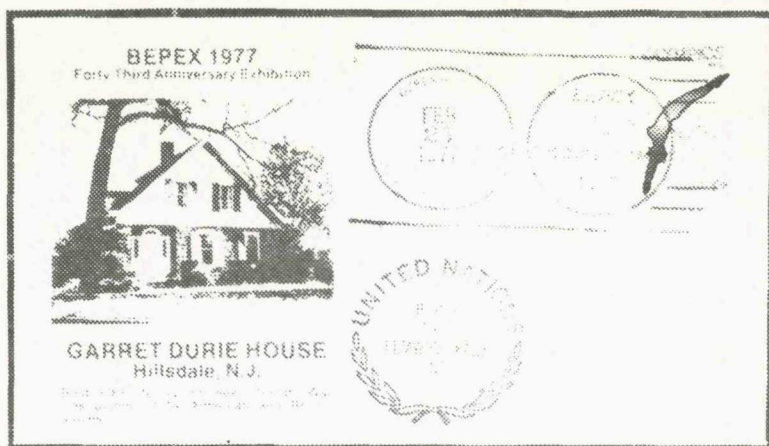
Bill Smithett not only won the SPI Trophy but also the best in the section for his rather well done showing entitled "Postal History of the 12 Olympiads". Clem Reiss placed second, and also won a Bepex Silver for his fine showing of "Competitive Boating & Sailing". Joe Lacko who did a good job with his "In The Shadows of the Olympic Flame" placed third and also won a Bepex Silver. Ed Parrasch with a well researched exhibit entitled "A Trip to the 1936 Olympic Games" won the Bepex Gold and Barb de Violini gathered a Bepex Silver with her "History of the World Soccer Championships 1930-1966". Andy Steiner managed a Bepex Bronze for his showing of "Soccer on Stamps".

Considering the limited frames allowed, our SPI members did themselves well with their materials and your judges found that they were rather well researched and tastefully mounted and told a good thematic story which after all, is the key to any good topical exhibit.

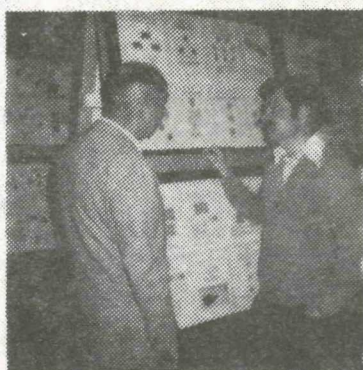
Lastly, your judges would like to offer a suggestion to any SPI member who plans to exhibit. . . touch off your frames with that postal history material and also remember that when you mix materials make certain it blends with the story and topic you are working with. . . . Get well wishes to Barb de Violini and Ed Epstein who both underwent surgery recently. . . . Nancy Jeanne Williams, daughter of Barb de Violini, was married to Roy Allen Quast on Nov. 20, 1976, in Houston, Texas. They are now living there. . . .

## Sign-Up a New Member!





Ira Seebacher & Joe Schirmer



Joe Schirmer & Ed Parrasch

## Polish Olympic Chronicle in Philately

*by Joe Schirmer, Associate Editor*

While this is a dull title, this well written book by the very prominent Polish Olympic philatelist, Fabian Bura, is well worth a place in the library of any Polish or Olympic collector.

Bura covers the Olympiads from 1924 thru 1972, and the data is in English and all illustrations are in color. The book is printed on a good grade of paper with easy reading type.

Stamps, covers, cancellations and labels are covered as they pertain to Poland's participation in the Olympic Games. The layout is one of the better ones that I have seen in the past two years.

The book is hard cover with its own slip case and consists of 148 pages on a 11" x 11" format.

There is some excellent material in the chapter on the Olympic Year 1944 in Polish POW Camps, and the materials covered are all well illustrated. Bura closes with some interesting writings on subjects such as; Olympic Appeal; Olympic Ideas in Creative Arts and the International Olympic Stamp Exhibition.

This fine book is published by Krajowa Agencja Wydawnicza in Warsaw. No price was given with the book. Interested collectors may contact the writer for further details.

FEATURING **SPORTS, OLYMPIC & SCOUT** MATERIAL

**1975-76 CATALOG OF SPORTS, OLYMPICS \$6.00 (POSTAGE INCL.)**



**IMPERF.—VARIETIES**

**DeLUXE MINIATURE SHEETS**

**ARTISTS PROOFS**

**MULTICOLOR ESSAYS**

**Expert member of the A.I.E.P.  
International Assoc. of Philatelic Experts**

**HENRI TRACHTENBERG**

**B.P. 49 94200 IVRY/SEINE FRANCE**

**LET'S POOL OUR OLYMPIC AND SPORTS KNOWLEDGE**

**EDITED BY EDWARD B. EPSTEIN**

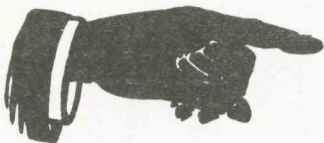
Sports and Olympic philatelists have, collectively, a great deal of knowledge which, when pooled, can be of mutual benefit. Questions concerning sports and Olympic philately will be assigned a number and published in JSP. Responses to questions will be printed in subsequent issues. Address all questions and answers to your editor: Edward B. Epstein. Paterson Board of Education, 33 Church St., Paterson, NJ 07505 U.S.A.

A-38 Your editor defines postal stationery as those postal cards, stamped envelopes, aerograms, letter sheets, etc., of all countries to which a stamp has been imprinted by the postal authority to carry the said article through the mails immaterial whether the stamp was imprinted officially by the government or to private order by arrangement with the government.

In recent years many postal stationery items originally not issued for Olympic purposes have been overprinted by various organizations with Olympic related cachets.

Many thanks to Sherwin Podolsky for his information about the 1896 post card and stationery envelope used by the 1896 Greek Olympic Committee. He states, "The post office provided free franking privileges. The Committee used a large double ring cancellation with no date. This cancellation has Greek wording. Splendid forgeries exist with this cancellation in French". However, if we take the above definition as our basis for postal stationery this handstamp cannot qualify.

As is known the 1896 Greek issue was typographed by the French Government Printing Works in Paris. Heiko Volk's book discusses 1896 postal stationery



## You Need This Book

The 1932 Olympic Games in the USA were probably the last one with a non-political setting and glossed over the despair of world economic depression. SPI has published its first handbook gathering the evidence in postal history and vignettes. It has over 200 pages, about 400 items illustrated and comes with a vinyl gold-stamped three ring binder. Order your copy today from William F. Brown, 1408 N. Fenton Ave., Indianapolis, IN 46219 USA.

THE POSTAL HISTORY AND VIGNETTES OF THE 1932 OLYMPIC GAMES; priced at \$8.00 each, postpaid to MEMBERS ONLY. Foreign orders must be in US dollars by International Money Order or by bank draft drawn on a US bank.

NAME .....

ADDRESS .....

CITY ..... STATE ..... ZIP .....

.....





## Binders for JSP

NOTE: These Binders are for the  
NEW (Small) size JSP

Vinyl three ring binders gold-stamped  
"Journal of Sports Philately" on the  
front are now available. Price \$3.00  
each, postpaid.

\*\*\*\*\*

Order from: K-Line Publishing Co., P.O. Box 159,  
Berwyn, Ill. 60402 USA

Name \_\_\_\_\_

Address \_\_\_\_\_

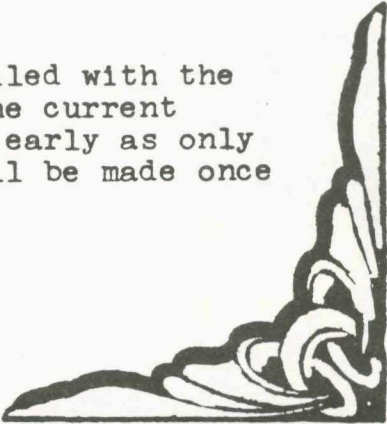
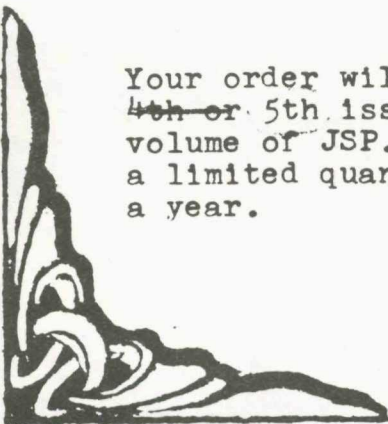
City \_\_\_\_\_ State \_\_\_\_\_ ZIP \_\_\_\_\_

Country \_\_\_\_\_

Your color choice of: ☐ Red ☐ Blue ☐ Green

☐ Brown ☐ Black

\*\*\*\*\*



Your order will be mailed with the  
~~4th~~ or 5th issue of the current  
volume of JSP. Order early as only  
a limited quantity will be made once  
a year.

proofs. During your editor's visit to Interphil last year he had occasion to see Manfred Bergman's exhibit of Olympic philately. Included in the exhibit were postal cards imprinted with the Greek two drachma stamp. In his writeup Bergman, of Switzerland, comments that "the Greek administration wanted to imprint the two drachma value on postal cards. However, the cards were never officially issued. Six varieties of smaller cards exist." It is assumed that Bergman's specimens were proofs of the cards printed by the French Government Printing Works.

Another item, in your editor's collection, may qualify as Olympic related postal stationery issued prior to the 1924 French postal card imprinted with the Milo of Grotona stamp. The International Olympic Committee, at the 1912 Stockholm Games, awarded Berlin the site of the 6th Olympiad (1916). The Grunewald Stadium, inaugurated on June 8, 1913 was to serve as venue for the 6th Olympiad which was not held due to World War I. An official Grunewald Stadium postal card was imprinted with a five pf. "Germania" stamp to private order for North German export. The view side of the postal card pictures a team marching into the stadium. Below the illustration is the text "Deutsches Stadion/Berlin - Grunewald". A stadium inauguration label, dated 8/June/1913, was applied to the divided back address side of the card in your editor's collection. The following text was imprinted along the left edge "Offizielle Stadion Postkarte: nur durch Norddeutschen Export - Verlag, Berlin N.W.7". At the bottom of the card, on the message portion, is imprinted "10000.I/ Hergestellt dR. Lambisch & Co. Berlin 9.17".

Q-42 Thanks to the questions and answers about the sport of Buzkashi, I have developed an interest in National sports. On Dec. 9, 1966 Siam (Thailand) issued a set of four stamps (Scott 460-63) to commemorate the 5th Asian Games. They picture the native sports of Thai; boxing, Takraw, Kite flying and Cudgel play. Can anyone provide information about these sports?

## SALES DEPARTMENT - NOTES -

ARLO SCOGGIN, 1345 Sleepy Hollow, Coshocton, Ohio 43812

### WANTED - COLLECTORS

Who need covers or cards with sport cancellations or themes. Special circuit selections can be arranged for specialized sports or countries. Want list service is still available for stamps issued before 1971. Blank sales books are available for 25¢ each, postpaid.

---

OLYMPIC SOUVENIR SHEET VARIETY by Joe Schirmer, Associate Editor

It has been brought to my attention that a variety exists on the 1972 Olympic souvenir sheet issued by Albania... Scott 1410. The silver panel containing the 6-pointed emblem and the Olympic rings is missing.

In multi-color printed sheets of this type, missing color is not uncommon, and over the years; numerous varieties of this type are found.

Andorra-1972 Munchen 1f. imperf (213).....	12.00
Argentina-20c blue-green (B19).....	10.00
Central Africa-1964 Tokyo, DeLuxe Sht. cpt. C20/24 .....	75.00
1972 Oly. cpt. imp. C105/10 .....	15.00
Comore-Tokyo imperf. C12 .....	15.00
Grenoble imperf. C22 .....	7.00
Dominican Rep.-1957 Oly. 2¢ Double impression of brown (485) .....	64.00
Rome 7¢ imp. Fencing (529) .....	35.00
France-1958 Lagrange Trial Color imp. 10.00	
1962 Golf, DeLuxe sht. (1927) .....	15.00
1968 Grenoble DeLuxe sht. 1176 .....	65.00
do- 5 DeLuxe shts. B411/15 .....	140.00
1968 Mexico trial color imp. 1223 ..	25.00
1972 Munchen DeLuxe sheet .....	35.00
1970 Softball DeLuxe sht. 1265 .....	22.50
Fr. Polynesia-1967 cpt. imp. 228/32 ..	15.00
Pacific, cpt. imp. C74/7 .....	12.00
Gabon-Tokyo, DeLuxe sht. cpt. C22/25	75.00
Abidjan cpt. imp. 163/4, C6 .....	18.00

do- DeLuxe sheet cpt. ....	27.00
Rome imperf. 462/5, C163/5 .....	POR
Haiti-Innsbruck ovpt. inverted B31 ..	12.00
Lebanon-Rome 25p Double Bicycle CB13 .....	45.00
Mali-Tokyo cpt. imp. 61/64 .....	40.00
1963 Combertin imp. 548 .....	20.00
Monaco-1965 Minsk imperf. 600 .....	6.00
1948 Oly. cpt. imperf. 204/8 .....	18.00
do-AIR cpt. imperf. CB7/10 .....	40.00
Morocco-1961 Runner cpt. imp. 53/55 ..	20.00
Malagasy-Peking, Ping Pong DeLuxe Sheets (2) .....	6.00
Niger-Dakar cpt. imperf. 114/6 .....	12.00
do-DeLuxe Sheet .....	18.00
Panama-Rome 10¢ horiz. pair, imperf. vertical C235 .....	30.00
Poland-Gordon Bennett 1939 cpt (3) imperf .....	18.00
do-Change of color, perforated .....	24.00
do-Postcard with Belgian Stamp .....	29.00

# **S. SEREBRAKIAN, INC.**

**P.O. BOX 448, MONROE, NEW YORK 10950**

## **SPORTS STAMPS PAGES**

	Price	Post.
VOLUME 1, through 1960 .....	12.25	(1.05)
VOLUME 2, 1961-65 .....	13.25	(1.05)
Supplement No. 7, 1966 .....	6.85	(.75)
Imperfs for No. 7 .....	1.45	
Suppl. No. 8-A 1967 .....	2.15	(.35)
Suppl. No. 9, late 1968 .....	1.85	(.35)
Suppl. No. 10, 1969 .....	1.85	(.35)
Suppl. No. 11, 1970 .....	1.75	(.50)
Suppl. No. 12, 1970 .....	1.85	(.50)
Suppl. No. 13, 1971 .....	2.15	(.95)
Suppl. No. 14, 1972 .....	2.15	(.95)

## **OLYMPIC GAMES PAGES**

	Price	Post.
1st thru 15th (Revised 1974) .....	5.90	(.80)
16th Games-'56 (Rev. 1970) .....	5.00	(.80)
17th Games (1960) .....	7.55	(.75)
18th Games (1964) .....	20.40	(1.60)
19th Games, Part 1 .....	5.60	(.75)
Imperfs for Part 1 .....	1.60	
19th Games, Part 2 .....	7.70	(.80)
Imperfs for Part 2 .....	1.00	
19th Games, Part 3 .....	9.25	(1.25)
Imperfs for Part 3 .....	1.75	
19th Games, Part 4 .....	17.50	(1.50)
Duplicate No. 4 for imp. ....	15.00	
Part 4 is for non-Olympic members only and the \$15.00 price applies only when ordered together with Reg. Part 4.		
20th, Part 1 .....	6.00	(1.00)
Part 1A non-I.O.C. co'tries .....	4.00	(1.00)
Part 2 .....	10.00	(1.25)
Part 2A (unlisted) .....	1.10	(0.95)
Part 3 .....	11.60	(1.50)
Part 3A (unlisted) .....	18.10	(1.25)



**K Line Publishing, Inc.**

P. O. Box 159

Berwyn, Illinois 60402



# A SIMPLIFIED CHECK-LIST OF COMPETITIVE SPORTS ON STAMPS

Bob Bruce and Jim Yarwood

## Section 26

### ADDITIONS, CORRECTIONS, AND DELETIONS IN SECTIONS 5-9

NOTE: Quite recently Gibbons changed the catalogue numbers on approximately one-quarter of its entries. To correct all these entries would require reprinting of a considerable portion of the check-list; this, of course, is extremely impractical. Accordingly, only those Gibbons numbers which appear in this section because of additions, corrections, or deletions will indicate the new Gibbons catalogue numbers. As previously, all additions and corrections have been underlined; all deletions have been ~~eliminated~~. Entries in parentheses imply no change; they are used only as points of reference for identification.

<u>Year</u>	<u>Scott</u>	<u>Minkus</u>	<u>Gibbons</u>	<u>Michel</u>	<u>Yvert</u>
COOK ISLANDS (Cont'd)					
	B29	342	MS404	333/B1 16	B1 16
<u>1974</u>	<u>372-76</u>	<u>393-97</u>	<u>457-61</u>	<u>385-89</u>	<u>364-68</u>
	377	398	MS462	390/B1 31	B131
	<u>398-400</u>	<u>428-30</u>	<u>482-84</u>	<u>419-21</u>	<u>386-88</u>
	400a	431	MS485	B1 36	B1 36
COSTA RICA					
<u>1972</u>	<u>C556</u>	<u>1094</u>	<u>901</u>	<u>829</u>	<u>543</u>
	C557	1095	902	830	544
	C559	1097	904	832	546
<u>1974</u>	<u>G610-12</u>	<u>1158-60</u>	<u>974-60</u>	<u>889-91</u>	<u>597-99</u>
CUBA					
<u>1972</u>	---	---	<u>1947-57</u>	<u>1790-96</u>	<u>1594-1600</u>
	---	---	MS1954	<u>1797-B1 38</u>	B1 37
	---	---	1988	1831	1640
	---	---	<u>1989-95</u>	<u>1832-38</u>	<u>1633-39</u>
<u>1973</u>	---	---	<u>1996-2002</u>	<u>1839-45</u>	<u>1641-47</u>
	---	---	MS2003	<u>1846/B1 40</u>	B1 39
	---	---	2010	1853	1654
	---	---	2042	1886	1089
	---	---	<u>2059-65</u>	<u>1902-08</u>	<u>1701-09</u>
<u>1974</u>	---	---	<u>2097-102</u>	<u>1940-45</u>	<u>1740-45</u>
	---	---	2124	1967	1767
	---	---	<u>2143-45</u>	<u>1986-88</u>	<u>1785-87</u>
	---	---	2158	2001	1800
	---	---	2159	2002	1801
	---	---	<u>2162-66</u>	<u>2005-09</u>	<u>1804-08</u>
<u>1975</u>	---	---	MS2179	<u>2022/B1 44</u>	B1 43
	---	---	<u>2229-33</u>	<u>2072-76</u>	<u>1867-71</u>
	---	---	MS2234	<u>2077/B1 46</u>	B1 45
CURACAO					
<u>1970</u>	<u>B106</u>	<u>582</u>	<u>525</u>	<u>226</u>	<u>414</u>
CYPRUS					
(1972)	<u>383-85</u>	<u>386-88</u>	<u>390-92</u>	<u>377-79</u>	<u>369-71</u>
<u>1973</u>	<u>394-95</u>	<u>397-98</u>	<u>401-02</u>	<u>387-88</u>	<u>379-80</u>
CZECHOSLOVAKIA					
(1963)	1202-07	1561-66	1385-90	1432-37	1300-05
(1972)	1813-16	2203-06	2026-29	2067-70	1911-14
	<u>1845-46</u>	<u>2215-16</u>	<u>2034-35</u>	<u>2084-85</u>	<u>1917-18</u>
	---	2219	2036	2084	1919
<u>1973</u>	1863	2264	2078	2121	1966
	1864	2265	2079	2122	1967
	1865	2266	2080	2123	1968
	<u>1896-1901</u>	<u>2297-2302</u>	<u>2111-16</u>	<u>2154-59</u>	<u>1999-2004</u>
<u>1974</u>	<u>1956-61</u>	<u>2359-64</u>	<u>2178-83</u>	<u>2216-21</u>	<u>2058-63</u>

<u>Year</u>	<u>Scott</u>	<u>Minkus</u>	<u>Gibbons</u>	<u>Michel</u>	<u>Yvert</u>
<u>1975</u>	<u>2005-07</u>	<u>2411-13</u>	<u>2219-21</u>	<u>2257-59</u>	<u>2102-04</u>
<b>DAHOMEY</b>					
(1972)	C163-65	612-14	465-67	484-86	A166-68
	C165a	615	MS468	484-86/B1 19	B1 19
	C170-72	628-30	481-83	499-501	A180-82
	C172a	631	MS484	B1 20	B1 20
<u>1973</u>	<u>C192-94</u>	<u>667-69</u>	---	<u>539-41</u>	<u>197-99</u>
<u>1974</u>	<u>C200</u>	<u>681</u>	<u>534</u>	<u>553</u>	<u>204</u>
	---	<u>696-700</u>	---	<u>566-70</u>	---
	---	<u>701</u>	---	<u>571/B1 23</u>	---
	---	---	---	<u>571B/B1 23B</u>	---
	---	---	---	<u>B1s 24-9</u>	---
	<u>C211-12</u>	<u>723-24</u>	<u>555-56</u>	<u>574-75</u>	<u>A221-22</u>
	---	<u>702</u>	---	<u>586</u>	---
	---	<u>703</u>	---	<u>587/B1 37</u>	---
	---	---	---	<u>587B/B1 37B</u>	---
	---	---	---	<u>586B/B1 38</u>	---
	---	---	---	<u>587B/B1 39</u>	---
	---	---	---	<u>605-08</u>	---
	---	---	---	<u>609/B1 49A</u>	---
	---	---	---	<u>609B/B1 49B</u>	---
	---	---	---	<u>605-08/B1s 50-3</u>	---
	---	---	---	<u>610</u>	---
	---	---	---	<u>610B/B1 54B</u>	---
	---	---	---	<u>611/B1 55</u>	---
	---	---	---	<u>611B/B1 56</u>	---
<u>1975</u>	---	<u>731-34</u>	---	---	---
	---	<u>735</u>	---	---	---
	<u>C238-39</u>	<u>764-65</u>	<u>593-94</u>	<u>640-41</u>	<u>242-43</u>
<b>DENMARK</b>					
<u>1974</u>	<u>558-59</u>	<u>745-46</u>	<u>581-82</u>	<u>573-74</u>	<u>583-84</u>
<b>DOMINICA</b>					
<u>1972</u>	<u>341-44</u>	<u>352-55</u>	<u>357-60</u>	<u>341-44</u>	<u>335-38</u>
	<u>344a</u>	<u>356</u>	<u>MS360</u>	<u>B1 14</u>	<u>B1 14</u>
<u>1974</u>	<u>395-401</u>	<u>417-23</u>	<u>422-28</u>	<u>397-403</u>	<u>390-95</u>
	<u>401a</u>	<u>424</u>	<u>MS429</u>	<u>402-03/B1 25</u>	<u>B1 25</u>
	<u>405</u>	<u>425</u>	<u>430</u>	<u>404</u>	<u>396</u>
<b>DOMINICAN REPUBLIC</b>					
(1937)	<u>328</u>	<u>379</u>	<u>496</u>	<u>331</u>	<u>301</u>
(1957)	---	---	---	<u>593B-600B</u>	---
(1959)	---	---	---	<u>672B-69B</u>	---
(1962)	---	---	---	<u>749B-56B</u>	---
<u>1972</u>	<u>696-8199</u>	<u>1124-25</u>	<u>1123-24</u>	<u>1004-05</u>	<u>714, A238</u>
	<u>8199</u>	<u>1125</u>	<u>1124</u>	<u>1005</u>	<u>A238</u>
<u>1973</u>	<u>707a-d</u>	<u>1144-47</u>	<u>1140-43</u>	<u>1020-23</u>	<u>725-28</u>
	<u>C204a-d</u>	<u>1148-51</u>	<u>1148-51</u>	<u>1028-31</u>	<u>A243-46</u>
	<u>C205a-d</u>	<u>1152-55</u>	<u>1152-55</u>	<u>1024-27</u>	<u>A247-50</u>
	<u>708a-d</u>	<u>1156-59</u>	<u>1144-47</u>	<u>1032-35</u>	<u>729-30</u>
<u>1974</u>	<u>720</u>	<u>1185-88</u>	<u>1184-87</u>	<u>1055-58</u>	<u>744-45, A259-60</u>
	<u>C214-15</u>	---	---	---	---
	<u>729-30</u>	<u>1203-06</u>	<u>1202-05</u>	<u>1072-75</u>	<u>756-57, C268-69</u>
	<u>C222-23</u>	---	---	---	---
<u>1975</u>	<u>753-54</u>	<u>1242-43</u>	<u>1238-39</u>	<u>1108-09</u>	<u>777-78</u>
	<u>C234-35</u>	<u>1244-45</u>	<u>1240-41</u>	<u>1110-11</u>	<u>A279-80</u>
<b>DUBAI</b>					
<u>1966</u>	---	<u>159-63</u>	<u>185-89</u>	<u>211-15</u>	<u>84(a)-(e)</u>
<u>1968</u>	---	<u>239A-H</u>	<u>277-304</u>	<u>314-22</u>	<u>99(a)-(h)</u>
	---	<u>239I</u>	<u>MS305</u>	<u>321/B1 49</u>	---
<u>1971</u>	<u>143</u>	<u>305</u>	<u>371</u>	<u>387</u>	<u>107(e)</u>
<u>1972</u>	<u>156-58, C65-7</u>	<u>333-38</u>	<u>399-404</u>	<u>410-15</u>	<u>118(a)-(c), A90(a)-(c)</u>

<u>'Year</u>	<u>Scott</u>	<u>Minkus</u>	<u>Gibbons</u>	<u>Michel</u>	<u>Yvert</u>
	<u>542</u>	<u>765</u>	<u>828</u>	<u>742</u>	<u>705</u>
<u>1974</u>	<u>543</u>	<u>766</u>	<u>829</u>	<u>743</u>	<u>706</u>
	<u>544</u>	<u>770</u>	<u>831</u>	<u>745</u>	<u>711</u>
	<u>546</u>	<u>783</u>	<u>833</u>	<u>749</u>	<u>712</u>
FRANCE					
(1938)	<u>349</u>	<u>507</u>	<u>612</u>	<u>427</u>	<u>396</u>
(1956)	<u>803-04</u>	<u>1266-67</u>	<u>1299-1300</u>	<u>1102-1103</u>	<u>1074-75</u>
<u>1973</u>	<u>1376</u>	<u>2044</u>	<u>2009</u>	<u>1838</u>	<u>1756</u>
<u>1974</u>	<u>---</u>	<u>2085</u>	<u>2042</u>	<u>---</u>	<u>1792</u>
FRENCH POLYNESIA					
(1963)	<u>203-04</u>	<u>315-16</u>	<u>28-9</u>	<u>28-9</u>	<u>22-3</u>
<u>1974</u>	<u>275-76</u>	<u>463-64</u>	<u>177-78</u>	<u>175-76</u>	<u>94-5</u>
	<u>C106</u>	<u>473</u>	<u>187</u>	<u>185</u>	<u>94-5</u>
<u>1975</u>	<u>C117-19</u>	<u>485-87</u>	<u>199-201</u>	<u>198-200</u>	<u>A93-5</u>
	<u>C120</u>	<u>489</u>	<u>202</u>	<u>201</u>	<u>A96</u>
FUJEIRA					
(1968)	<u>---</u>	<u>140A</u>	<u>---</u>	<u>---</u>	<u>---</u>
	<u>---</u>	<u>140B</u>	<u>---</u>	<u>---</u>	<u>---</u>
	<u>---</u>	<u>197-205</u>	<u>---</u>	<u>243-51</u>	<u>82(a)-(e), A22(a)-(d)</u>
	<u>---</u>	<u>205(±)</u>	<u>---</u>	<u>---</u>	<u>---</u>
	<u>---</u>	<u>177-86</u>	<u>---</u>	<u>266-75</u>	<u>80(a)-(f), A20(a)-(d)</u>
	<u>---</u>	<u>177(±)</u>	<u>---</u>	<u>---</u>	<u>---</u>
	<u>---</u>	<u>86(±)</u>	<u>---</u>	<u>---</u>	<u>---</u>
	<u>---</u>	<u>187v</u>	<u>---</u>	<u>---</u>	<u>---</u>
	<u>---</u>	<u>220(±)</u>	<u>---</u>	<u>---</u>	<u>---</u>
	<u>---</u>	<u>29(±)</u>	<u>---</u>	<u>---</u>	<u>---</u>
(1969)	<u>---</u>	<u>230v</u>	<u>---</u>	<u>---</u>	<u>---</u>
	<u>---</u>	<u>259v</u>	<u>---</u>	<u>---</u>	<u>---</u>
	<u>---</u>	<u>286-92</u>	<u>---</u>	<u>349-55</u>	<u>---</u>
	<u>---</u>	<u>293</u>	<u>---</u>	<u>353-55/B1 13</u>	<u>---</u>
<u>1970</u>	<u>---</u>	<u>527-27E</u>	<u>---</u>	<u>544-49</u>	<u>80(a)-(e)</u>
	<u>---</u>	<u>527F</u>	<u>---</u>	<u>550/B1 27</u>	<u>---</u>
	<u>---</u>	<u>---</u>	<u>---</u>	<u>550B/B1 27B</u>	<u>---</u>
	<u>---</u>	<u>469-73</u>	<u>---</u>	<u>---</u>	<u>---</u>
	<u>---</u>	<u>474</u>	<u>---</u>	<u>---</u>	<u>---</u>
	<u>---</u>	<u>478</u>	<u>---</u>	<u>1460</u>	<u>---</u>
	<u>---</u>	<u>---</u>	<u>---</u>	<u>1460B</u>	<u>---</u>
	<u>---</u>	<u>663</u>	<u>---</u>	<u>600</u>	<u>---</u>
	<u>---</u>	<u>---</u>	<u>---</u>	<u>600B</u>	<u>---</u>
	<u>---</u>	<u>---</u>	<u>---</u>	<u>B1 36</u>	<u>---</u>
	<u>---</u>	<u>---</u>	<u>---</u>	<u>601</u>	<u>---</u>
	<u>---</u>	<u>---</u>	<u>---</u>	<u>601B</u>	<u>---</u>
	<u>---</u>	<u>---</u>	<u>---</u>	<u>B1 37</u>	<u>---</u>
	<u>---</u>	<u>519-22</u>	<u>---</u>	<u>529-32</u>	<u>---</u>
	<u>---</u>	<u>523-26</u>	<u>---</u>	<u>533-36</u>	<u>---</u>
	<u>---</u>	<u>469A-73A</u>	<u>---</u>	<u>---</u>	<u>---</u>
	<u>---</u>	<u>474A</u>	<u>---</u>	<u>---</u>	<u>---</u>
(1971)	<u>---</u>	<u>---</u>	<u>---</u>	<u>---</u>	<u>A49</u>
	<u>---</u>	<u>639-43</u>	<u>---</u>	<u>673-77</u>	<u>116(a)-(b), A56(a)-(c)</u>
	<u>---</u>	<u>---</u>	<u>---</u>	<u>673B-77B</u>	<u>---</u>
	<u>---</u>	<u>644</u>	<u>---</u>	<u>678B/B1 53B</u>	<u>---</u>
	<u>---</u>	<u>---</u>	<u>---</u>	<u>678C/B1 53C</u>	<u>---</u>
	<u>---</u>	<u>645-52</u>	<u>---</u>	<u>719-26</u>	<u>118(a)-(f), A59(a)-(b)</u>
	<u>---</u>	<u>---</u>	<u>---</u>	<u>719B-26B</u>	<u>---</u>
	<u>---</u>	<u>653</u>	<u>---</u>	<u>727/B1 64</u>	<u>---</u>
	<u>---</u>	<u>---</u>	<u>---</u>	<u>727B/B1 64B</u>	<u>---</u>
	<u>---</u>	<u>---</u>	<u>---</u>	<u>---</u>	<u>A60(a)-(e)</u>
	<u>---</u>	<u>667</u>	<u>---</u>	<u>728</u>	<u>---</u>
	<u>---</u>	<u>---</u>	<u>---</u>	<u>728B</u>	<u>---</u>
	<u>---</u>	<u>---</u>	<u>---</u>	<u>729/B1 65</u>	<u>---</u>
	<u>---</u>	<u>666</u>	<u>---</u>	<u>730</u>	<u>---</u>
	<u>---</u>	<u>---</u>	<u>---</u>	<u>730B</u>	<u>---</u>
	<u>---</u>	<u>---</u>	<u>---</u>	<u>731/B1 66</u>	<u>---</u>
	<u>---</u>	<u>691</u>	<u>---</u>	<u>734</u>	<u>---</u>



Year	Scott	Minkus	Gibbons	Michel	Yvert
				754B	
				755/B1 72	
		690		756	
				756/B1 73	
		696-98		689-91	57(a)-(c)
				689B-91B	A59(a)-(c)
		699		692/B1 57	
				692B/B1 57B	
		746-50		1061-65	122(a)-(c)
				1061B-65B	
		751-55		1066-70	123(a)-(e)
				1066B-70B	
		756-60		1071-75	124(a)-(e)
				1071B-75B	
		761-65		1076-80	126(a)-(e)
				1076B-80B	
		766-70		1081-85	129(a)-(e)
				1081B-85B	
		771-75		1086-90	133(a)-(e)
				1086B-90B	
		776-80		748-52	
				748B-52B	
		780A		753/B1 71	
				753B/B1 71B	
		781-86		758-62	
				758B-62B	
		786A		758B/B1 74B	
				758C/B1 74C	
1972		852-57		819-24	132(a)-(c), A70(a)-(c)
				819B-24B	
		858		825/B1 87	
				825B/B1 87B	
		852x-57x		839-44	137(a)-(c), A75(a)-(c)
				839B-44B	
		858x		845/B1 90	
				845B/B1 90B	
		906-06B		882-B882	A77(a) (c)
		948-59		903-14	
				903B-14B	
		960		915/B1 100	
				915B/B1 100B	
		961-80		1040-59	
				1040B-59B	
		981		1060/B1 109	
				1060B/B1 109B	
		1051		1123/B1 113	
				1123B/B1 113B	
		1052			
		1053		1091	
				1091B	
		1054		1091/B1 110	
				1092	
				1092B	
		1220		1092/B1 111	
				1403	
				1403B	
				1403B/B1 144B	
		1221			
		1222		1404	
				1404B	
				1404B/B1 145B	
		1223			
				1279	
				1279B	
				1279B/B1 125B	
				1280	
				1280B	
				1280B/B1 126B	

<u>Year</u>	<u>Scott</u>	<u>Minkus</u>	<u>Gibbons</u>	<u>Michel</u>	<u>Yvert</u>
---	---	---	---	1281	---
---	---	---	---	1281B	---
---	---	---	---	1281B/B1 127B	---
---	---	---	---	1282	---
---	---	---	---	1282B	---
---	---	---	---	1282B/B1 128B	---
---	1163-87	---	---	1407-43	---
---	1188-1212	---	---	B1s 148-72	---
---	1163x-87x	---	---	1432-56	---
---	1188x-1212x	---	---	B1x 173-97	---
---	1219	---	---	---	A77
---	1236-55	---	---	1102-21	---
---	---	---	---	1102B-21B	---
---	---	---	---	1122/B1 112	---
---	---	---	---	1122B/B1 112B	---
---	---	---	---	1338-42	---
---	---	---	---	1338B-42B	---
---	---	---	---	1343/B1 136	---
---	---	---	---	1343B/B1 136B	---
---	---	---	---	1391-1400	---
---	---	---	---	1401/B1 142	---
---	---	---	---	1401B/B1 142B	---
---	---	---	---	1402/B1 143	---
---	---	---	---	1402/B1 143B	---
GABON					
(1968)	C73a	365	MS331	B1 10	B1 11
1973	C137	536	479	493	A137
	C137a	537	MS480	493/B1 26	B1 22
1974	C153-55	582B-82D	527-29	540-42	A152-54
	C155a	582B	MS530	B1 27	B1 23
1975	C166-68	609-11	557-59	569-71	166-68
	C168a	612	MS560	B1 28	B1 24
GERMANY					
(1972)	B490a-d	1948-51	1624-27	734-37	588-91
	B490e	---	---	---	---
1973	1105	1976	1652	763	621
1974	1146-47	2022-23	1698-99	811-12	658-59
1975	1163	2048	1727	835	684
	1167	2057	1736	844	693
GERMANY (Berlin)					
1974	9NB107	466	B446	469	432
1975	9N380	492	B477	493	457
GERMAN DEMOCRATIC REPUBLIC					
(1964)	714a	---	---	---	---
1973	1450	1747	E1546	1831	1514
	B170-71	1748-49	E1544-45	1829-30	1515-16
	1485-86	1787-88	1583-84	1872-73	1787-88
1974	1528-30	1832-34	E1632-35	1928-30	1608-10
	1570-71	1872-75	E1685-88	1969-72	1651-54
	1592c	1896	1709	1992	1669
1975	1665-68	1967-70	E1780-83	2065-68	1745-48
	1697-1700	2001-06	E1817-22	2099-2104	1779-84
	B178-79	---	---	---	---
	1701	2007	MS E1823	2105/B1 43	B1 38
GHANA					
1974	525-29	768-71	715-18	564-67	503-06
	---	---	715B-18B	564C-67C	507-10
	529	772	MS719	568-71/B1 57	B1 55
	---	772v	---	---	---
	535-38	778/B1	720-23	581-84	520-23
	---	---	---	581B-84B	---
	539	782	MS724	585-88/B1 58	B1 56

Year	Scott	Minkus	Gibbons	Michel	Yvert
1975	--- <u>549-52</u> --- <u>553</u> ---	--- <u>792-95</u> --- <u>796</u> ---	--- <u>739-42</u> --- <u>MS743</u> ---	<u>585B-58B/B1 58B</u> <u>597-600</u> <u>597B-600B</u> <u>601-04/B1 60</u> <u>601B-04B/B1 60B</u>	--- <u>538-31</u> --- <u>B1 58</u> ---
GREAT BRITAIN					
1973	<u>694-96</u>	<u>781-83</u>	<u>908-10</u>	<u>621-23</u>	<u>684-86</u>
1975	<u>745-48</u>	<u>833-36</u>	<u>980-83</u>	<u>678-81</u>	<u>756-59</u>
GREECE					
(1969)	<u>942</u>	<u>1183</u>	<u>1101</u>	<u>999</u>	<u>977</u>
1970	<u>982</u>	<u>1223</u>	<u>1141</u>	<u>1039</u>	<u>1017</u>
1973	<u>1072</u>	<u>1312</u>	<u>1231</u>	<u>1128</u>	<u>1106</u>
1974	<u>111</u>	<u>1352</u>	<u>1270</u>	<u>1168</u>	<u>1146</u>
1975	<u>1157</u>	<u>1400</u>	<u>1314</u>	<u>1214</u>	<u>1190</u>
GRENADA					
1972	<u>G1-2, 439</u> <u>439a</u> <u>G20-1</u> <u>G15</u>	<u>471-73</u> <u>474</u> <u>505-06</u> <u>507</u>	<u>474-76</u> <u>MS477</u> <u>527-28</u> <u>MS519</u>	<u>433-35</u> <u>51 21</u> <u>476-77</u> <u>478-79/B1 25</u>	<u>419-21</u> <u>B1 20</u> <u>A1-2</u> <u>B1 22</u>
1973	<u>486-89</u> <u>499-505</u> <u>506</u>	<u>538-41</u> <u>551-57</u> <u>558</u>	<u>552-55</u> <u>565-71</u> <u>MS564</u>	<u>512-15</u> <u>525-31</u> <u>532/B1 29</u>	<u>465-68</u> <u>475-81</u> <u>B1 26</u>
1974	<u>537</u> <u>553-60</u> <u>561</u>	<u>589</u> <u>599-606</u> <u>607</u>	<u>613-20</u> <u>MS621</u>	<u>564</u> <u>574-81</u> <u>582/B1 34</u>	<u>509</u> <u>523-30</u> <u>B1 32</u>
1975	<u>583, 584, 635, 636,</u> <u>585, 587, 637, 639,</u> <u>598, 600, 650, 652,</u> <u>601</u> <u>668-74</u> <u>675</u>	<u>653</u> <u>723-29</u> <u>730</u>	<u>649, 650, 651, 653,</u> <u>664, 666, 626, 628,</u> <u>667</u> <u>728-34</u> <u>MS735</u>	<u>611, 612,</u> <u>613, 615,</u> <u>666, 626, 628,</u> <u>629</u> <u>701-07</u> <u>708/B1 48</u>	<u>557, 558,</u> <u>559, 561,</u> <u>572, 574,</u> <u>575</u> <u>618-24</u> <u>B1 44</u>
GRENADA GRENADINES					
1974	--- --- ---	<u>16-23</u> <u>24</u> <u>102-08</u>	<u>16-23</u> <u>MS24</u> <u>101-07</u>	<u>17-24</u> <u>25/B1 2</u> <u>105-11</u>	<u>15-22</u> <u>B1 2</u> <u>89-95</u>
1975	--- --- ---	<u>109</u> <u>118, 119,</u> <u>120, 122,</u> <u>133, 135,</u> <u>136</u>	<u>MS108</u> <u>109, 110, 113, 114,</u> <u>111, 113, 115, 117,</u> <u>124, 126, 128, 130</u> <u>127</u>	<u>112/B1 14</u> <u>113, 114,</u> <u>115, 117,</u> <u>128, 130</u> <u>131</u>	<u>B1 14</u> <u>96, 97,</u> <u>98, 100,</u> <u>111, 113,</u> <u>114</u>
GUATEMALA					
1939	<u>G311</u>	<u>432</u>	<u>387</u>	<u>401</u>	<u>A114</u>
(1953)	<u>G182-84</u>	<u>572-74</u>	<u>528-30</u>	<u>539-41</u>	<u>A183-85</u>
(1969)	<u>G431-35</u>	<u>882-86</u>	<u>868-72</u>	<u>862-66</u>	<u>A432-36</u>
1970	<u>408-11</u>	<u>905-08</u>	<u>884-87</u>	<u>882-85</u>	<u>415-18</u>
(1971)	<u>412</u> <u>413</u> <u>414</u> <u>415</u>	--- <u>920</u> <u>921</u> <u>922</u>	<u>850</u> <u>851</u> <u>852</u> <u>853</u>	<u>896</u> <u>897</u> <u>898</u> <u>899</u>	<u>419</u> <u>420</u> <u>421</u> <u>422</u>
(1972)	<u>419</u>	<u>945</u>	<u>MS926</u>	<u>928-29/B1 13</u>	<u>B1 14</u>
1974	---	<u>998</u>	---	<u>B1 15</u>	---
GUINEA					
1963	<u>312-14</u> --- ---	<u>499C-510C</u> <u>4990-5010</u> <u>499Y-501Y</u>	<u>411-13</u> --- ---	<u>211a-13a</u> <u>211b-13b</u> ---	--- <u>170, 172, 174</u> <u>171, 173, 175</u>
1965	<u>355-60,</u> <u>G65</u> --- ---	<u>520-26</u> --- <u>527</u> ---	<u>364-70</u> --- <u>MS424a</u> ---	<u>265-71</u> --- <u>265B-71B</u> <u>272/B1 5</u> <u>273/B1 6B</u> <u>512B-21B</u> <u>539B</u>	<u>217-22, A50</u> --- --- <u>B1 4</u> --- ---
(1969)	---	---	---	---	---



Country	Year	Code	Value	Unit
ECUADOR	(1966)	---	1271B-73B/B1	27B
		---	1268B-70B/B1	26B
		---	1280B/82B/B1	28B
		---	1333B/82B/B1	28B
(1967)	---	---	---	---
	---	1549v	1322-24/B1	36
	---	1828	B1	65
	---	1828v	B1	65B
1975	---	1578-79	1658-59	---
	---	1583-1603	1662-82	---
EGYPT	1972	---	---	---
		---	---	---
		---	---	---
		---	---	---
1975	---	---	---	---
	---	---	---	---
	---	---	---	---
	---	---	---	---
EQUATORIAL GUINEA	(1972)	---	---	---
		---	---	---
		---	---	---
		---	---	---
1973	---	---	---	---
	---	---	---	---
	---	---	---	---
	---	---	---	---

<u>Year</u>	<u>Scott</u>	<u>Minkus</u>	<u>Gibbons</u>	<u>Michel</u>	<u>Yvert</u>
	---	869-77	---	580-88	39(a)(g), A24(a)-(b)
	---	---	---	589-97	---
	---	878	---	598/B1 125	---
	---	879	---	599/B1 126	---
1974	---	910-18	---	640-48	42(a)-(f), A27(a)-(b)
	---	---	---	649-57	---
	---	919	---	658/B1 137	---
	---	920	---	659/B1 138	---
	---	945-53	---	707-15	45(a)-(i)
	---	---	---	716-24	---
	---	954	---	725 & 726/B1 155	---
	---	955	---	727 & 728/B1 156	---
	---	982	---	764/B1 163	---
	---	983	---	765/B1 164	---
	---	984	---	766 & 767/B1 165	---
	---	985	---	768/B1 166	---
	---	986	---	769/B1 167	---
	---	987	---	770 & 771/B1 168	---
	---	---	---	772/B1 169	---
	---	---	---	773/B1 170	---
	---	---	---	774 & 775/B1 171	---
	---	---	---	776/B1 172	---
	---	---	---	777/B1 173	---
	---	---	---	778 & 779/B1 174	---
	---	---	---	780/B1 175	---
	---	---	---	781/B1 176	---
	---	---	---	782 & 783/B1 177	---
	---	---	---	784/B1 178	---
	---	---	---	785/B1 179	---
	---	---	---	786 & 787/B1 180	---
	---	1047-53	---	852-58	---
	---	1054	---	859/B1 189	---
	---	1055	---	860/B1 190	---
1975	---	1197-1207	---	1006-16	58(a)-(k)
	---	---	---	1017-27	---
	---	1208	---	1028/B1 219	---
	---	---	---	1028B/B1 219B	---
	---	1209	---	1029/B1 220	---
	---	---	---	1029/B1 220B	---
	---	1210	---	1030/B1 221	---
	---	1211	---	1031/B1 222	---
	---	1212	---	1032-33/B1 223	---
	---	1213	---	1034/B1 224	---
	---	1214	---	1035/B1 225	---
	---	1215	---	1036-37/B1 226	---
	---	1284-90	---	1074-80	63(a)-(b), A45(a)-(b)
	---	---	---	1081-87	---
	---	1291	---	1088/B1 231	---
	---	1292	---	1089/B1 232	---
	---	1326-32	---	1230-36	68(a)-(f), A52(a)-(b)
	---	---	---	1237-43	---
	---	1333	---	1244/B1 269	---
	---	1334	---	1245/B1 270	---
	---	---	---	1246-52	63(a)-(e), A47(a)-(b)
	---	---	---	1253/B1 271	---
	---	---	---	1254/B1 272	---

# ETHIOPIA

1975 737 968 932 821 742

# FIJI

(1963)	199-202	211-14	329-32	171-74	173-76
1973	330-32	344-46	478-80	303-05	310-12
1974	341-43	355-57	489-91	314-16	321-23
	344-46	358-60	492-94	317-19	324-26

# FINLAND

1973 530 750 818 727 687

# "A Simplified Handbook of Adult Competitive Sports Stamps"

*Bob Bruce*

## Section 23 - Czechoslovakia

- 37. 30h carmine-brown (volleyball) (350,000)
- 38. 40h brownish gray (woman's javelin) (1,400,000)
- 39. 60h brown-violet (motorcyclist) (3,740,000)

Sc 611-13; Min 943-45; Gi 787-89; Mi 823-25; Yt 727-29

1954, April 24. Sport. Unwmkd; P 11½; designed by J. Behounek (Gi), Mario Stretti (Mi); engraved by Jaroslav Goldschmied (No. 40) and Ladislav Jirka (No. 41); recess printed by Postal Printing Office, Prague.

- 40. 30h violet-brown (two runners) (4,915,000)
- 41. 1k dark blue (woman swimmer) (2,555,000)

Sc 642, 644; Min 984, 986; Gi 828, 830; Mi 856, 858; Yt 765, 767

Notes: (a) The leading runner on No. 40 is apparently Emil Zatopek (Seebacher). (b) The inscription on No. 40 reads "Prepare to work for and defend the Fatherland"; on No. 41, "Every citizen a swimmer".

1955, January 20. 1st National Spartacist Games, 1955. Unwmkd; P 11½ x 11½ (Mi), 11½ (Sc, Min, Gi, and Yt); designed by Mario Stretti; engraved by Jindra Schmidt (No. 42) and Jiri A. Svengsbir (No. 43); recess printed (No. 42) and recess printed and photogravure (No. 43) by Postal Printing Office, Prague.

- 42. 30h brownish red (woman holding torch) (7,665,000)
- 43. 45h black/blue (ski jumper) (1,100,000)

Sc 681-2; Min 1023-4; Gi 853-4; Mi 890-1; Yt 790-1

1955, June 21. 1st National Spartacist Games, Prague, June-July, 1955. Unwmkd; P 11½; designed by K. Svolinsky; engraved by Jindra Schmidt; recess printed by Postal Printing Office, Prague.

- 44. 20h dark violet-blue (woman athlete) (400,000)
- 45. 60h dark green (dancing couple) (5,640,000)
- 46. 1.60k brown-red (athlete) (1,825,000)

Sc 696-8; Min 1050-2; Gi 880-2; Mi 917-9; Yt 812-14

1955, August 28. 30th International Motorcycle Races, Gottwaldov, Sept. 13-18, 1955. Unwmkd; P 11½ (Gi and Min), 11½ x 11 3/4 (Mi), 12 (Yt); designed by Mario Stretti; engraved by B. Roule; recess printed by Postal Printing Office, Prague.

- 47. 60h dark violet-brown (cup and motorcyclists) (3,365,000)

Sc 720, Min 1066; Gi 896; Mi 933; Yt 828

1956, April 25. 9th International Peace Bicycle Race, Warsaw-Berlin-Prague. May 1-15, 1956. Unwmkd; P 11½; designed by Jan Cerny; engraved by Ladislav Jirka; recess printed and photogravure by Postal Printing Office, Prague.

- 48. 30h dark green/pale blue (cyclists) (3,700,000)

Sc 747; Min 1094; Gi 923; Mi 965; Yt 855



- 1956, April 25. 5th European Women's Basketball Championship, Prague. Unwmkd; P 11½; designed by Jan Cerny (Gi and Mi), Anna Suchardova-Podzemna (Halm and Kobylanski); engraved by Jan Mracek; photogravure and recess printed by Postal Printing Office, Prague.
49. 45h dark blue-red (women basketball players) (3,565,000)
- Sc 748; Min 1095; Gi 924; Mi 966; Yt 856
- 1956, April 25. 16th Olympic Games, Melbourne, Nov. 22-Dec. 8, 1956. Unwmkd; P 11½; designed by Anna Suchardova-Podzemna; engraved by Jan Mracek; photogravure and recess printed by Postal Printing Office, Prague.
- Olympic rings, plus
50. 75h dark violet-brown/dull yellow (woman discus thrower, hurdler and runner) (4,017,500)
- Sc 749; Min 1096; Gi 926; Mi 967; Yt 857
- 1956, September 8. Steeplechase, Paradubice. Unwmkd; P 11½; designed by E. Kotrba; engraved by Jiri A. Svengsbir; photogravure and recess printed by Postal Printing Office, Prague.
51. 60h black-blue/yellowish (steeplechase run) (3,265,000)
- Sc 763; Min 1110; Gi 925; Mi 981; Yt 856A
- 1956, September 8. International Marathon, Kosice, 1956. Unwmkd; P 11½; designed by Anna Suchardova-Podzemna; engraved by Jiri A. Svengsbir; photogravure and recess printed by Postal Printing Office, Prague.
52. 80h black-lilac/blue-violet (marathon runners) (3,315,000)
- Sc 764; Min 1111; Gi 927; Mi 982; Yt 857A
- 1956, September 8. 16th Olympic Games, Melbourne, Nov. 22-Dec. 8, 1956. Unwmkd; P 11½; designed by Anna Suchardova-Podzemna; engraved by Jan Mracek; photogravure and recess printed by Postal Printing Office, Prague.
- Olympic rings, plus
53. 1.20k black-olive/yellow-orange (same as No. 50) (1,007,000---Trachtenberg, 1,007,500--Mi)
- Sc 765; Min 1112; Gi 928; Mi 983; Yt 857B
- 1957, April 30. 10th International Peace Bicycle Race, Prague-Berlin-Warsaw, 1957. Unwmkd; P 11½ (Min and Yt), 11½ x 11 (Sc), 11 3/4 x 11½ (Mi), 12 x 11½ (Gi); designed by Z. Brdlik; engraved by Ladislav Jirka; photogravure and recess printed by Postal Printing Office, Prague.
54. 30h dark violet-brown/gray-ultramarine (cyclists) (3,235,000)
55. 60h Russian green/ochre/brown (same as No. 54) (350,000)
- Sc 796-7; Min 1142-3; Gi 971-2; Mi 1013-14; Yt 900-01
- 1957, April 30. International Archery Championship, Prague. Unwmkd; P 11½ (Min and Yt), 11½ x 11 (Sc), 11 3/4 x 11½ (Mi); designed by Jan Cerny; engraved by Jan Mracek; photogravure and recess printed by Postal Printing Office, Prague.
56. 60h brown-black/emerald green (woman archer) (350,000--Trachtenberg, 3,410,000--Mi)
- Sc 798; Min 1144; Gi 975; Mi 1016; Yt 903

1957, April 30. European Boxing Championship, Prague. Unwmkd; P 11 x 11½ (Sc), 11½ x 11 ¾ (Mi), 11½ (Min and Yt), 11½ x 12 (Gi); designed by Rudolf Klimovic; engraved by Ladislav Jirka; photogravure and recess printed by Postal Printing Office, Prague.

57. 60h dark violet-brown/orange (boxers) (350,000--Trachtenberg, 3,325,000--Mi)

Sc 799; Min 1145; Gi 974; Mi 1015; Yt 904

1957, July 5. 32nd International Motorcycle Race. Unwmkd; P 11½ (Sc and Mi), 11½ x 12 (Min, Gi and Yt); designed by Z. Brdlik; engraved by Jan Mracek; photogravure and recess printed by Postal Printing Office, Prague.

58. 60h black/pale blue (motorcyclists) (3,065,000)

Sc 815; Min 1161; Gi 976; Mi 1034; Yt 919

1958, January 25. European Figure Skating Championship, Bratislava. Unwmkd; P 11½ (Min and Mi), 11½ x 12 (Sc and Yt); designed by J. Behounek; engraved by Jiri A. Svengsbir; recess printed by Postal Printing Office, Prague.

59. 30h bright violet (girl figure skater) (2,615,000)

Sc 839; Min 1187; Gi 1015; Mi 1058; Yt 942

1958, January 25. World Canoeing Championship, Prague. Unwmkd; P 11½ (Min and Mi), 11½ x 12 (Sc, Gi and Yt); designed by Jiroslav Kovar; engraved by Jan Mracek; recess printed by Postal Printing Office, Prague.

60. 40h dark blue (canoeing) (920,000--Trachtenberg, 2,830,000--Mi)

Sc 840; Min 1188; Gi 1016; Mi 1059; Yt 943

1958, January 25. European Volleyball Championship, Prague. Unwmkd; P 11½ (Min and Mi), 11½ x 11 (Sc, Gi and Yt); designed by Mario Stretti; engraved by B. Roule; recess printed by Postal Printing Office, Prague.

61. 60h siena (volleyball) (2,790,000)

Sc 841; Min 1189; Gi 1017; Mi 1060; Yt 944

1958, January 25. 4th World Parachuting Championship, Bratislava. Unwmkd; P 11½ (Min and Mi), 11½ x 12 (Sc, Gi and Yt); designed by Mario Stretti; engraved by Bedrich Housa; recess printed by Postal Printing Office, Prague.

62. 80h dark violet-blue (parachutist) (920,000)

Sc 842; Min 1190; Gi 1018; Mi 1061; Yt 945

1958, January 25. 6th World Cup Soccer Championship, Stockholm. Unwmkd; P 11½ (Min and Mi), 11½ x 12 (Sc, Gi, and Yt); designed by Jan Cerry and Jindra Schmidt; engraved by Jaroslav Goldschmied and Jindra Schmidt; recess printed by Postal Printing Office, Prague.

63. 1.60k green (soccer) (920,000--Trachtenberg, 2,720,000--Mi and Halm and Kobylanski)

Sc 843; Min 1191; Gi 1019; Mi 1062; Yt 946

1959, February 14. 50th anniversary of Czechoslovakian Ice Hockey Association. Unwmkd; P 11½ x 11 (Sc), 11 ¾ x 11½ (Mi), 12 x 11½ (Min and Gi), 12 x 12½ (Yt); designed by Mario Stretti; engraved by

Jiri A. Svengsbir; photogravure and recess printed (Mi), lithography and recess printed (Min) by Postal Printing Office, Prague.

64. 20h dark carmine-brown/green-gray (ice hockey) (3,540,000)

Sc 897; Min 1245; Gi 1073; Mi 1116; Yt 1001

1959, February 14. World Ice Hockey Championship. Unwmkd; P 11½ x 11 (Sc), 11 ¾ x 11½ (Mi), 12 x 11½ (Min and Gi), 12 x 12½ (Yt); designed by Mario Stretti; engraved by Jindra Schmidt; recess printed (Gi), photogravure and recess printed (Mi), lithography and recess printed (Min) by Postal Printing Office, Prague.

65. 60h blue-violet/pale bluish green (ice hockey) (3,185,000)

Sc 899; Min 1247; Gi 1075; Mi 1118; Yt 1003

1959, February 14. Sports. Unwmkd; P 11½ x 11 (Sc), 11 ¾ x 11½ (Mi), 12 x 11½ (Min and Gi), 12 x 12½ (Yt); designed by Mario Stretti; designed by B. Roule (No. 66), Bedrich Housa (No. 67), Jan Mracek (No. 68), Jaroslav Goldschmied (Mi), Jindra Schmidt (Gi) (No. 69); photogravure and recess printed (Mi), lithography and recess printed (Min) by Postal Printing Office, Prague.

66. 30h dark carmine-brown/green-gray (woman javelin thrower)  
(3,890,000)

67. 1k lilac-red/yellow-green (hurdling) (3,165,000)

68. 1.60k black-blue/blue (rowing) (2,445,000)

69. 2k dark carmine-brown/light blue (high jump) (550,000)

Sc 898,900, 901, 902; Min 1246, 1248, 1249, 1250; Gi 1074, 1076, 1077, 1078; Mi 1117, 1119, 1120, 1121; Yt 1002, 1004, 1005, 1006

1960, January 20. 2nd Winter Spartacist Games. Unwmkd; P 11 x 12 (Halm and Kobylanski), 11½ x 11 ¾ (Mi), 11½ (Sc and Yt), 11½ x 12 (Min and Gi); designed by Anna Suchardova-Podzemna (Nos. 70 and 72), Mario Stretti, (No. 71); engraved by Jindra Schmidt (No. 70), Ladislav Jirka (No. 71), and Bedrich Housa (No. 72); recess printed (Gi), photogravure and recess printed (Sc and Mi), lithography and recess printed (Min) by Postal Printing Office, Prague.

70. 30h minium/black-brown (woman gymnast) (5,835,000)

71. 60h gray-blue/black-blue (cross country skier) (5, 180,000)

72. 1.60k pale brown/violet-brown (basketball) (3,225,000)

Sc 955-7; Min 1305-07; Gi 1133-5; Mi 1176-8; Yt 1059-61

1960, February 27. 8th Winter Olympic Games, Squaw Valley, Feb. 18-20, 1960. Unwmkd; P 11½ x 11½ (Mi), 11½ (Min, Gi and Yt); designed by Mario Stretti; engraved by Ladislav Jirka (No. 73) and Jindra Schmidt (No. 74); recess printed (Gi), photogravure and recess printed (Mi), lithography and recess printed (Min) by Postal Printing Office, Prague.

Olympic rings

73. 60h black-brown/pale blue (ice hockey players) (2,040,000)

74. 1.80k black/pale bluish green (figure skaters) (525,000)

Sc 965-6; Min 1312-13; Gi 1140-41; 1183-4; Yt 1066-7

1960, June 15. 2nd National Summer Spartacist Games, Prague, June 23-July 8, 1960. Unwmkd; P 11 x 11½ (Halm and Kobylanski), 11½ x 11 ¾ (Mi), 11½ (Sc and Yt), 11½ x 11 (Gi and Min); designed by Anna Suchardova-Podzemna; engraved by Jiri A. Svengsbir; photogravure and recess printed by Postal Printing Office, Prague.

75. 30h sea green/lilac-red (two girls in "red ball" drill)  
(4,855,000)



- \* 76. 60h rose/black (gymnast with wand) (4,685,000)
- 77. 1k pale orange/violet-blue (three girls with hoops) (3,965,000)

Sc 958-60; Min 1332-4; Gi 1160-2; Mi 1203-05; Yt 1086-8

1960, June 15. 17th Olympic Games, Rome, Aug. 25-Sept. 11, 1960. Unwmkd; P  $11\frac{1}{2}$  x  $11\frac{1}{2}$  (Mi),  $11\frac{1}{2}$  (Min, Gi and Yt); designed by Mario Stretti (Nos. 78 and 80), Z. Adamek (No. 79); engraved by Jindra Schmidt (Nos. 78 and 80), Bedrich Housa (No. 79); recess printed (Gi), photogravure and recess printed (Min and Mi) by Postal Printing Office, Prague.

Olympic rings, plus

- 79. 1k black/yellow-orange (running) (3,247,500)
- 79. 1.80k black/brick red (women's gymnastics) (2,540,000)
- 80. 2k black/pale green-blue (rowing) (1,037,500)

Sc 967-9; Min 1335-7; Gi 1163-5; Mi 1206-08; Yt 1089-91

1961, February 10 (Min and Gi), 20 (Sc and Mi). Czech Grand Prize of Motorcycle Racing, Brno. Unwmkd; P  $11\frac{1}{2}$  x 11 (Sc),  $11\frac{1}{2}$  x 12 (Yt),  $11\frac{3}{4}$  x  $11\frac{1}{2}$  (Mi), 12 x  $11\frac{1}{2}$  (Min and Gi); designed by Anna Suchardova-Podzemna; engraved by Bedrich Housa; recess printed (Gi), photogravure and recess printed (Sc and Mi) by Postal Printing Office, Prague.

- 81. 30h black-blue/carmine (motorcycle race) (3,220,000)

Sc 1024; Min 1374; Gi 1201; Mi 1244; Yt 1126

1961, February 10 (Min and Gi), 20 (Sc and Mi). European Rowing Championship, Prague. Unwmkd; P  $11\frac{1}{2}$  x 11 (Sc),  $11\frac{1}{2}$  x 12 (Yt),  $11\frac{3}{4}$  x  $11\frac{1}{2}$  (Mi), 12 x  $11\frac{1}{2}$  (Min and Gi); designed by Vladimir Kovarik; engraved by Ladislav Jirka; recess printed (Gi), photogravure and recess printed (Sc and Mi) by Postal Printing Office, Prague.

- 82. 40h violet-black/carmine (sculling) (3,680,000)

Sc 1025; Min 1375; Gi 1203; Mi 1246; Yt 1127

1961, February 10 (Min and Gi), 20 (Sc and Mi). Woman's figure skating championship, Prague. Unwmkd; P 11 x  $11\frac{1}{2}$  (Sc),  $11\frac{1}{2}$  x  $11\frac{3}{4}$  (Mi),  $11\frac{1}{2}$  x 12 (Min, Gi and Yt); designed by Ivan Strnad; engraved by Ladislav Jirka; photogravure and recess printed by Postal Printing Office Prague.

- 83. 60h purple/blue (woman figure skater) (3,295,000)

Sc 1026; Min 1376; Gi 1204; Mi 1247; Yt 1128

1961, February 10 (Min and Gi), 20 (Sc and Mi). 35th anniversary of Czech rugby. Unwmkd; P 11 x  $11\frac{1}{2}$  (Sc), 11 x 12 (Halm and Kobylanski)  $11\frac{1}{2}$  x  $11\frac{3}{4}$  (Mi),  $11\frac{1}{2}$  x 12 (Min, Gi and Yt); designed by Ivan Strnad; engraved by Ladislav Jirka; recess printed (Gi), photogravure and recess printed (Sc, Min and Mi) by Postal Printing Office, Prague.

- 84. 1k violet-ultramarine/yellow (rugby player) (3,160,000)

Sc 1027; Min 1377; Gi 1205; Mi 1248; Yt 1129

1961, February 20 (Sc). February 10 (Min, Gi, Mi, and Halm and Kobylanski). 60th anniversary of Czech soccer. Unwmkd; P 11 x  $11\frac{1}{2}$  (Sc),  $11\frac{1}{2}$  x  $11\frac{3}{4}$  (Mi),  $11\frac{1}{2}$  x 12 (Min, Gi and Yt); designed by Anna Suchardova-Podzemna; engraved by Bedrich Housa; recess printed (Gi), photogravure and recess printed (Sc, Min and Mi) by Postal Printing Office, Prague.

86. 1.60k dark lilac-brown/brick red (distance runners) (560,000)\*

Sc 1029; Min 1379; Gi 1207; Mi 1250; Yt 1131

1962, February 5. International Peace Bicycle Race, Berlin-Prague-Warsaw. Unwmkd; P  $11\frac{1}{2}$  x  $11\frac{3}{4}$  (Mi),  $11\frac{1}{2}$  (Sc and Yt),  $11\frac{1}{2}$  x 12 (Min and Gi); designed by Jan Cerny; engraved by Jan Mracek; photogravure and recess printing by Postal Printing Office, Prague.

87. 30h black/violet-blue (bicyclists) (3,915,000)

Sc 1091; Min 1443; Gi 1271; Mi 1315; Yt 1194

1962, February 5. 15th World Gymnastics Championship, Prague. Unwmkd; P  $11\frac{1}{2}$  x  $11\frac{3}{4}$  (Mi),  $11\frac{1}{2}$  (Sc and Yt),  $11\frac{1}{2}$  x 12 (Min); designed by Anna Suchardova-Podzemna; engraved by Jiri A. Svengsbir; photogravure and recess printed by Postal Printing Office, Prague.

88. 60h black/yellow (woman gymnast) (3,595,000)

Sc 1092; Min 1444; Gi 1272; Mi 1316; Yt 1195

1962, February 5. World Figure Skating Championship, Prague. Unwmkd; P  $11\frac{1}{2}$  x  $11\frac{3}{4}$  (Mi),  $11\frac{1}{2}$  (Sc and Yt),  $11\frac{1}{2}$  x 12 (Min and Gi); designed by Anna Suchardova-Podzemna; engraved by Bedrich Housa; photogravure and recess printed by Postal Printing Office, Prague.

89. 60h black/green-blue (figure skating pair) (3,380,000)

Sc 1093; Min 1445; Gi 1273; Mi 1317; Yt 1196

1962, February 5. World Bowling Championship, Bratislava. Unwmkd; P  $11$  x  $11\frac{1}{2}$  (Halm and Kobylanski),  $11\frac{1}{2}$  x  $11\frac{3}{4}$  (Mi),  $11\frac{1}{2}$  (Sc and Yt),  $11\frac{1}{2}$  x 12 (Min and Gi); designed by Jan Cerny; engraved by Jiri A. Svengsbir; recess printed (Gi), photogravure and recess printed (Sc, Min and Mi) by Postal Printing Office, Prague.

90. 1k black/lilac-rose (woman bowler) (1,845,000)

Sc 1094; Min 1446; Gi 1274; Mi 1318; Yt 1197

1962, February 5. 7th World Cup Soccer Championship, Chile, May 30-June 17, 1962. Unwmkd; P  $11$  x 12 (Halm and Kobylanski),  $11\frac{1}{2}$  x  $11\frac{3}{4}$  (Mi),  $11\frac{1}{2}$  (Sc and Yt),  $11\frac{1}{2}$  x 12 (Min and Gi); designed by Jan Cerny; engraved by Ladislav Jirka; photogravure and recess printed by Postal Printing Office, Prague.

91. 1.20k black/yellowish green (soccer goalie) (1,780,000)

Sc 1095; Min 1447; Gi 1275; Mi 1319; Yt 1198

1962, February 5. 7th European Athletic Championship, Belgrade. Unwmkd; P  $11\frac{1}{2}$  x  $11\frac{3}{4}$  (Mi),  $11\frac{1}{2}$  (Sc and Yt),  $11\frac{1}{2}$  x 12 (Min and Gi); designed by Anna Suchardova-Podzemna; engraved by Jan Mracek; photogravure and recess printed by Postal Printing Office, Prague.

92. 1.60k black/dark olive-green (discus) (425,000)

Sc 1096; Min 1448; Gi 1276; Mi 1320; Yt 1199

1962, June 20. 7th World Cup Soccer Championship, Chile, May 30-June 17, 1962. Unwmkd; P  $11\frac{1}{2}$  x  $11\frac{3}{4}$  (Mi),  $11\frac{1}{2}$  (Sc),  $11\frac{1}{2}$  x 12 (Min, Gi, and Halm and Kobylanski), 12 (Yt); designed by Jan Cerny; engraved by Ladislav Jirka; recess printed (Gi), photogravure and recess printed (Sc, Min and Mi) by Postal Printing Office, Prague.

93. 1.60k emerald green/dull yellow (soccer goalie) (4,065,000)

\* Sc 1123; Min 1485; Gi 1306; Mi 1350; Yt 1225

1962, July 20. 2nd Summer Spartacist Games of Friendly Armies, Prague, September, 1962. Unwmkd; P 11½ x 11 3/4 (Mi), 11½ x 12 (Min, Gi and Halm and Kobylanski) 12 (Yt); designed by Josef Balaz; engraved by Jaroslav Goldschmied (Mi), Jindra Schmidt (Gi) (No. 94), Jan Mracek (No. 95), Bedrich Housa (No. 96), Ladislav Jirka (No. 97); recess printed (Gi), photogravure and recess printed (Min and Mi) by Postal Printing Office, Prague.

94. 30h dark green/violet-blue (soldier in swimming relay) (6,135,000)  
95. 40h violet/yellow (soldier hurdling) (3,195,000)  
96. 60h violet-brown/emerald green (soccer) (4,780,000)  
97. 1k dark violet-blue/salmon (soldier with rifle in relay) (3,110,000)

Sc 1124-7; Min 1486-9; Gi 1307-10; Mi 1351-4; Yt 1226-9

1963, January 28. World Table Tennis Championship, Prague. Unwmkd; P 11½; designed by K. Hruska; engraved by Jiri A. Svengsbir; photogravure and recess printed by Postal Printing Office, Prague.

98. 30h black/dark blue-gray (table tennis player) (5,635,000)

Sc 1150; Min 1506; Gi 1332; Mi 1377; Yt 1251

1963, January 28. 80th anniversary of Czech cycling. Unwmkd; P 11½; designed by K. Hruska; engraved by Jiri A. Svengsbir; photogravure and recess printed by Postal Printing Office, Prague.

99. 60h black/orange (bicyclist) (5,170,000)

Sc 1151; Min 1507; Gi 1333; Mi 1378; Yt 1252

1963, January 28. 1st Czechoslovakian Winter Games. Unwmkd; P 11½; designed by K. Hruska; engraved by Bedrich Housa; photogravure and recess printed by Postal Printing Office, Prague.

100. 80h black/blue (skiing) (2,650,000)

Sc 1152; Min 1508; Gi 1334; Mi 1379; Yt 1253

1963, January 28. 15th anniversary of "Golden Helmut Race", Pardubice. Unwmkd; P 11½; designed by K. Hruska; engraved by Jan Mracek; photogravure and recess printed by Postal Printing Office, Prague.

101. 1k black/blue-violet (motorcyclist) (2,155,000)

Sc 1153; Min 1509; Gi 1335; Mi 1380; Yt 1254

1963, January 28. World Weight Lifting Championship, Prague. Unwmkd; P 11½; designed by K. Hruska; engraved by Bedrich Housa; photogravure and recess printed by Postal Printing Office, Prague.

102. 1.20k black/brown (weight lifter) (2,880,000)

Sc 1154; Min 1510; Gi 1336; Mi 1381; Yt 1255

1963, January 28. 1st Czechoslovakian Summer Games, 1963. Unwmkd; P 11½; designed by K. Hruska; engraved by Josef Hercik; photogravure and recess printed by Postal Printing Office, Prague.

103. 1.60k black/red (hurdler) (1,805,000)

Sc 1155; Min 1511; Gi 1337; Mi 1382; Yt 1256

1963, October 26. 18th Olympic Games, Tokyo, Oct. 10-25, 1964. Un-



wmkd; P 11½; designed by Rudolf Klimovic; engraved by Jan Mracek (Nos. 104 and 105), Ladislav Jirka (Nos. 106 and 107), and Bedrich Housa (Nos. 108 and 109; photogravure and recess printed by Postal Printing Office, Prague.

Olympic rings, plus

- 104. 30h dark blue/green (canoeing) (3,502,500)
- 105. 40h red-brown/Turkish blue (volleyball) (3,227,500)
- 106. 60h carmine-red/orange (wrestling) (3,600,000)
- 107. 80h dark violet/orange-red (basketball) (1,982,500)
- 108. 1k violet-blue/brown-red (boxing) (2,017,500)
- 109. 1.60k ultramarine/blue (gymnastics) (525,000)

Sc 1202-07; Min 1561-6; Gi 1385-90; Mi 1432-7; Yt 1300-05

1964, January 20. International University Games (Sc), Czech student games (Gi). Unwmkd; P 11½ (Sc, Min and Yt), 11½ x 12 (No. 110--Gi and Mi), 12 x 11½ (No. 111--Gi and Mi); designed by Nedezda Synecka; engraved by Bedrich Housa; recess printed (Gi); photogravure and recess printed (Sc, Min and Mi) by Postal Printing Office, Prague.

- 110. 30h blue-violet/lemon yellow (figure skating) (4,860,000)
- 111. 80h black-blue/pale red (skiing) (2,495,000)

Sc 1217-8; Min 1579-80; Gi 1400-01; Mi 1450-1 Yt 1318-19

1964, January 20. World Handball Championship. Unwmkd; P 11½ (Sc, Min and Yt), 11½ x 12 (Gi, Mi and Halm and Kobylanski); designed by Nedezda Synecka; engraved by Bedrich Housa; recess printed (Gi), photogravure and recess printed (Sc, Min and Mi) by Postal Printing Office, Prague.

- 112. 1k carmine-brown/bright violet (handball player) (2,175,000)

Sc 1219; Min 1581; Gi 1402; Mi 1452; Yt 1320

1964, January 20. 9th Winter Olympic Games, Innsbruck, Jan. 29-Feb. 9, 1964. Unwmkd; P 11½; designed by Anna Suchardova-Podzemna; engraved by Ladislav Jirka (Nos. 113 and 114), Jan Mracek (No. 115); recess printed (Gi), photogravure and recess printed (Mi) by Postal Printing Office, Prague.

- 113. 1k brownish violet/pale bluish green (ice hockey) (515,000)
- 114. 1.80k black-green/pale blue-violet (tobogganing) (562,500)
- 115. 2k violet-blue/pale bluish green (ski jump) (318,200)

Sc 1220-22; Min 1576-78; Gi 1403-05; Mi 1447-49; Yt 1315-17

1964, September 2. 18th Olympic Games, Tokyo, Oct. 10-20, 1964. Unwmkd; P 13½ (Sc and Yt) 14 (Min, Gi, Mi, and Halm and Kobylanski); designed by Anna Suchardova-Podzemna; engraved by Jiri A. Svengsbir (Nos. 116 and 118), Jindra Schmidt (Nos. 117 and 120), and Ladislav Jirka (Nos. 119 and 121); recess printed (Gi and Mi), photogravure and recess printed (Sc and Min) in sheets of ten) by Postal Printing Office, Prague.

Olympic rings, plus

- 116. 50h multicolored (bicycling) (2,787,700)
- 117. 80h multicolored (discus and pole vault) (1,865,000)
- 118. 1k multicolored (soccer) (2,076,000)
- 119. 1.20k multicolored (rowing) (708,000)
- 120. 1.60k multicolored (swimming) (719,000)
- 121. 2.80k multicolored (weight lifting) (371,000)

Sc 1258-63; Min 1617-22; Gi 1440-45; Mi 1488-93; Yt 1354-59

1965, January 3 (Sc, Gi and Mi), 15 (Min). 3rd National Spartacist Games. Unwmkd; P 11½ (Sc and Yt), 11 ¾ x 11½ (Mi), 12 x 11½