



JOURNAL OF PHILATELY SPORTS

JUN 24 1982

Number 3

January - February 1982

Volume 20

1906 OLYMPIC CANCELS

by Sherwin Podolski

The IMOS August, 1981 circular (they call it Rundschreiben) is at hand. It consists of unbound sheets about the same size as in our Journal of Sport Philately. Some sheets are pre-punched, most are not. Some are folded like a brochure. Because readers' interests are so varied, this method of publishing each article on separate sheets allows for easy removal of items of interest. Also it is easier to classify the individual articles for future reference.

New readers may wonder about IMOS. IMOS is INTERNATIONALE MOTIVGRUPPEN OLYMPIADEN UND SPORT which freely translates into International Topical Group for Olympics and Sport. Its publications are in German, but its membership is international. There are 309 members in 28 countries, of which 205 are in West Germany alone.

IMOS membership dues are 15DM per year. The business manager is Herbert Huber, Justus von Liebigstrasse 14, 6707 Schifferstadt, West Germany. The membership list is highly detailed, taking up 18 pages. I have found that many IMOS members can read and write English adequately. SPI members could do well in expanding their philatelic contacts through IMOS.

The August, 1981 IMOS circular contains a major article on the special cancellations used at the Greek Olympics at Athens in 1906.

Author Claus-J. Fink discusses genuine, fake and part-fake varieties of the three main types of the special cancels. The three main types are:

1. Stadion (Stadium)
2. Acropolis
3. Zappeion

The Zappeion cancellation comes with three varieties of the date. These varieties are:

- 3a. day, month, year
- 3b. month, day, year
- 3c. month inverted, day inverted, year normal

Author Fink states that the duration of use of all three main types of cancellers was April 9, 1906 through April 19, 1906. Also, the diameter of the genuine, original canceller was 30 millimeters.

Fink describes the "totally fake" (Ganzfalschung) varieties found on all types of the cancels. Let us examine the makeup of the canceller. Essentially it consists of the following parts:

- a. Outer circle with Greek city name ATHNAI at top and post office name (Stadion, Acropolis or Zappeion) at bottom in brackets.
- b. Inner circle with Greek word OLYMPIAKOI along the upper arc.
- c. Inner circle with the Greek word ALQNES in a straight line in bottom arc.
- d. Date bridge across inner and outer circles.

Author Fink points out that the first I in OLYMPIAKOI is directly below the first stroke in the letter N in ATHNAI in genuine ("echt" = true) cancellations. Other cancellations in which the I in OLYMPIAKOI points to the space between H and N in ATHNAI are fake ("falsch").

Fink then goes on to describe part-fakes (Teilfalschung). How can that be? Author Fink doesn't give the reason, but this writer has heard that the special cancellers still exist today and are being applied by favor. The component parts (dates, names) are removable and changeable.

The part-fake that Fink reports exists only on the STADION type canceller. He reports that the distance between the O and N in STADION is closer in the genuine spelling of that word than in the part-fake. I note also, from the illustration provided, that in the genuine impression, the I in STADION starts its slant entirely under the E in ALQNES. In the part-fake, the I in STADION starts beneath the last stroke of the N in ALQNES.

Fink also gives details as to the dimensions of the component parts of the cancel. The original size measurements are:

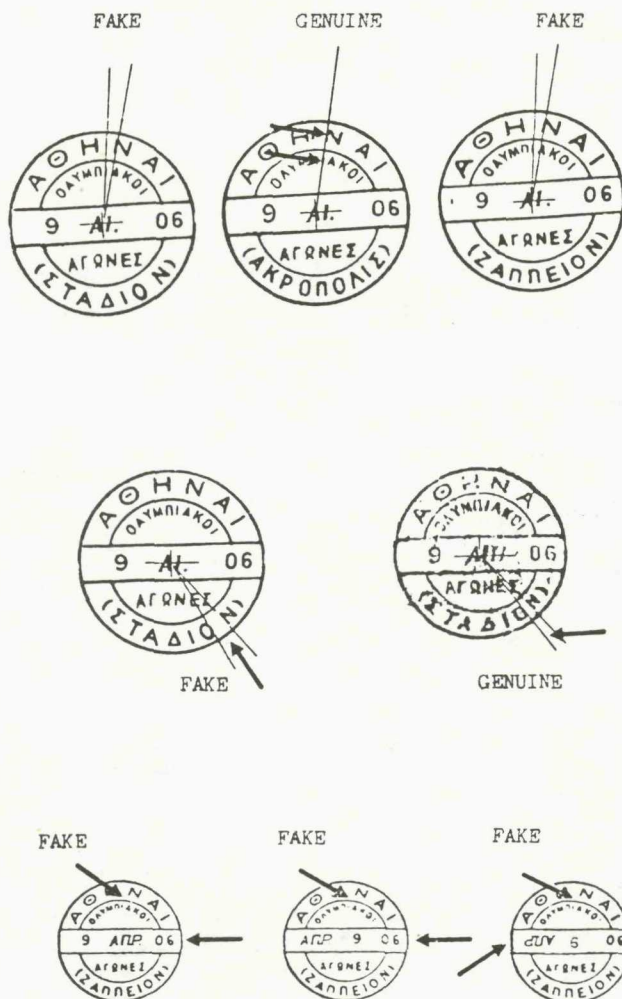
- a. outer circle 30 mm.
- b. inner circle 21 mm.
- c. distance between inner and outer circle 4.5 mm.
- d. height of upper inner arc at maximum 7.5 mm.
- e. height of date bridge 6 mm.
- f. height of lower inner arc at maximum of 7.5 mm.

In further reference to the part-fake variety of the STADION cancel, Fink explains that the genuine spacing (narrow) of O and N in STADIUM appears in both genuine and fake varieties of the canceller in reference to the line-up of the I in OLYMPIAKOI and the N in ATHNAI.

Thus, it is possible to have a STADION cancellation in which the line-up of the I in OLYMPIAKOI is genuinely and correctly below the N in ATHNAI, but the spacing between the O and N in STADION is too wide. Such a cancellation is a fake.

Fink also indicates that the earlier impressions tend to be oily.

Fink also presents a point system for each type of cancel (Stadion, Zappeion, Acropolis) as found on piece, on Olympic stamps, on correctly franked postcard, on Olympic postcard, on Olympic postcard with Olympic stamp (untravelling), on Olympic postcard with mixed franking (Olympic and non-Olympic stamps) travelled, on Olympic stamp on piece of cover, on Olympic stamps on correctly franked cover, on Olympic stamps on cover with mixed franking truly travelled, and similar variations on registered covers, etc..



SPORTS PHILATELISTS INTERNATIONAL

PRESIDENT: John La Porta, 3604 S. Home Ave., Berwyn, IL 60402
VICE-PRESIDENT: Edward B. Epsrein, Bd. of Education, 33 Church St., Paterson, NJ 07505
SEC.-TREASURER: C. A. Reiss, 1410 Illuminating Bldg., Cleveland, OH 44113
DIRECTORS: Robert M. Bruce, 1457 Cleveland Rd., Wooster, OH 44691
Margaret A. Jones, 3715 Ashford-Dunwoody Rd. N.E., Atlanta, GA 30319
Max Kordylewski, 1 Perry St., London, Ont., N6C 3E7 Canada
Joseph M. Lacko, 1031 W. Chestnut St., Union, NJ 07083
AUCTIONS: Edwin E. Parrasch, 111 Large Ave., Hillsdale, NJ 07642
MEMBERSHIP: Margaret A. Jones, 3715 Ashford-Dunwoody Rd. N.E., Atlanta, GA 30319
SALES DEPT: Arlo Scoggin, 1345 Sleepy Hollow, Coshocton, OH 43812

Sports Philatelists International is an independent, non-profit organization dedicated to the study and collecting of postage stamps and related collateral material dealing with sports (including Olympics) and recreation and to the promotion of international understanding and good-will through mutual interest in philately and sports. Its activities are planned and carried on entirely by the unpaid, volunteer services of its members. All members in good standing receive the bi-monthly issue of Journal of Sports Philately. The dues for regular membership are \$6.00 per year with a one time admission fee of \$1.00. Membership applications may be obtained from Margaret A. Jones, 3715 Ashford-Dunwoody Rd. N.E., Atlanta, GA 30319.

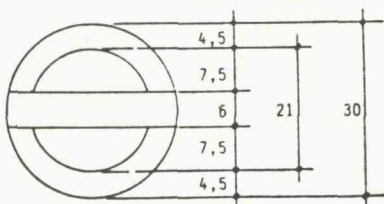
Journal of SPORTS PHILATELY

EDITOR: John La Porta, 3604 S. Home Ave., Berwyn, IL 60402
ASSOCIATE EDITORS: Robert M. Bruce, 1457 Cleveland Road, Wooster, OH 44691
Edward B. Epstein, Bd. of Education, 33 Church St., Paterson, NJ 07505
Glenn A. Estus, Box 451, Westport, NY 12993
Margaret A. Jones, 3715 Ashford-Dunwoody Rd., N.E., Atlanta, GA 30319
Joseph M. Lacko, 1031 W. Chestnut St., Union, NJ 07083
Sherwin D. Podolsky, 16035 Tupper St., Sepulveda, CA 91343
Brian G. Vincent, P.O. Box 1321, Wellington, New Zealand
CIRCULATION: John La Porta, 3604 S. Home Ave., Berwyn, IL 60402
PUBLISHER: K-Line Publishing Co., Inc., P.O. Box 159, Berwyn, IL 60402
PUBLICITY: Chris Northwood, 2600 Church St., Stevens Point, WI 54481

APS Affiliate Number 39

ADVERTISING RATES: FULL PAGE \$10.00; HALF PAGE \$6.00. Advance payment for all advertising must accompany copy. Camera ready copy must be supplied by the advertiser. Publishing deadline is the first day of January, March, May, July, September and November.

NOTE: The opinions expressed in this publication are those of the individual authors and they do not necessarily represent those of the editor, the officers of SPI or the position of SPI itself. All catalogue numbers quoted in this publication are from Scott's Standard Postage Stamp Catalogue unless specifically stated otherwise. SPI and JSP do not guarantee advertisements, but accept copy in good faith, reserving the right to reject objectionable material.



Measurement in
millimeters

Fink seems to believe that auction estimations and realizations are often irrational, failing to give orderly consideration to meaningful factors or the lack of them. His value system is intended as a guide to collectors, dealers and auction houses.

Fink also makes an interesting observation on the dates. Although the period of use of all the types of cancellations is April 9, 1906 through April 19, 1906, examples dated from April 10 through April 18, 1906 inclusive are particularly scarce. No known use after April 19, 1906 has been reported.

Readers possessing Heiko Volk, Jr.'s exhaustive work *DIE OLYMPISCHEN SPIELE IN BLICKPUNKT DER PHILATELIE UND IHREN RANDGEBIETEN* (The Olympic Games in the Viewpoint of Philately and Its Related Areas) may thus want to examine the illustrations of the 1906 special cancellations on pages 22 and 23. Applying Fink's research to the illustrations of the postmarks on those pages will result in the following cancellations being false: STADION (page 22), ZAPPEION (page 22), and all three ZAPPEION varieties on page 23. Only the ACROPOLIS type on page 22 appears to be correct.

Fink bases his conclusions on a two-year study of exhibitions and auctions, and inquiry of experts on classical Olympic material. His own collection of this material was also used for study.

I find Fink's study interesting and disturbing. Reportedly, the Greek Post Office's records on the early Greek postal history was destroyed in World War II. This means that the task of verifying genuine postmarks is left to researchers.

What does this suggest to the average Olympic collector? I would continue to examine all early Greek Olympic stamps for cancellations. Loose copies sometimes show up with portions of the cancellation. At reasonable discounts off Scott catalog, they must be considered bargains. The cancellations should be studied, giving consideration to the factors Fink suggests. There are, of course, other cancellations of interest beside the special commemorative types Fink analyzes.

I would be most interested in hearing from readers and receiving good quality photocopies of their material with the special cancellations, especially on piece or covers. How prevalent are these alleged fakes? Do the fakes exist on covers that otherwise appear legitimate? Do any readers contest Fink's findings?

In the meantime, I will be analyzing my own material against Fink's study. You might like to do the same. Will we pass the test?

S P I MAIL SALE # 8

OLYMPIC STAMPS AND COVERS ETC.

1.	-	Hassan Card C. M. DANIELS 4 time medal winner in swimming 1904 - 08	15.00
2.	-	Same Charles Bacon Jr. Hurdler '08	12.00
3.	--	Same Platt Adams High Jump '08 (bronze)	10.00
4.	-	Mecca Card Harry Porter High Jump Gold	15.00
5.	-	Same Frank C. Irons Broad Jump Gold	12.00
6.	*	'28 Netherlands B25-32 Unused no gum C.V.	82.25
7.	--	'32 Copy of the Act of the State of N. Y. Establishing the Van Hovenburg Eobsled Run Some aging and minor edge tears	----
8.	V	'32 Skier across Map seal French Text Rampacher #3	7.50
9.	V	Same Spanish Text ^{MNH} Rampacher #4	12.50
10.	V	'36 Saluting Standing Skier Trory #170 (V97) English text Imp. MNH	5.00
11.	PC	'36 Multi colored card unused same as above Vignette IV OLYMP. WINT. SF. G. F.	MB 15.00
12.	PS	'36 15+10 Stadium card H&G 242 M	MB 10.00
13.	PS	'36 6+4 Stadium Card H&G 241 M	MB 7.50
14.	**	'36 Germany B82a MNH	10.00
15.	**	'36 Germany B83a MNH	10.00
16.	FDC	'48 Great Britain 271-4 Wembly Oly Ring cancel Green and Gold runner cachet F	30.00
17.	FDC	'48 Same artcraft cachet F	25.00
18.	*	'52 Austria B277 MLH F	20.00
19.	*	'52 Germany Berlin 9N81-3 OG	22.50
20.	PC	'56 Italy Orange and brown view of Invernali CORTINA 1956 - HOCKEY SU GHIACCIO cancel	MB 3.00
21.	o	'60 Greece 687 used F	21.00
22.	**	'60 Costa Rica C313 P+I MNH VF	Est 15.00
23.	**	'60 Costa Rica C303-12 MNH VF	CV 18.73
24.	**	'60 Lebanon B13-5, CB12-4 CB14a	CV 19.00
25.	**	'60 Hungary 1326-35 B218 P&I MNH VF	Est 20.00
26.	**	'60 Hungary 1336 P&I MNH VF	Est 30.00
27.	**	'60 Chad C1 MNH	CV 8.50
28.	*	'64 Russia 2843-7 Imp MLH	Est 3.00
29.	**	'64 Japan B12-31 (less 24,27,28) B14a 17a, 20a, 23a	CV 1809
30.	**	'64 Guinea 2 s&s MNH Sieger #235a 236a	30MKS
31.	FDC	'64 Argentina B44-6, CB33 - Unadd. Cach.	MB
32.	C	'64 Austria Oly. Canc. INNSBRUCK AXALIS Cach.	MB
33.	CC	'64 Qatar 40 + 59 Reg Com Cover br	MB
34.	FDC	'64 Bahamas 202 Cach. - Autographed by Durward Knowles Gold Medal Winner	15.00
35.	CC	'64 Germany DDR 703,7,9, B118 *821,2,3 on Reg. Air Mail Cover to N.Y.	Est 5.00
36.	**	'68 Belgium B824-8	CV 3.62
37.	**	'68 Mexico C310a, C311a MNH	CV 5.00
38.	**	'68 Mexico C318-20, C320a MNH	CV 8.00
39.	**	'68 Mexico 990-5 MNH	CV 8.00
40.	*	'68 Mexico 990-5, C335-8 MNH	CV 11.80
41.	FDC	'68 Korea 618-9, 620-1 Unadd Cach	MB
42.	FDC	'68 Korea 621a Cach Unadd (boxing)	MB
43.	LPC	'68 Russia 3492-5 on 4 Maxim Cards Unused	5.00
44.	FDC	'68 Pakistan 267-8 Flame & rings Cach	MB
45.	FDC	'68 Spain 1509-11 on three Maxim FD Cards	5.00
46.	SC	'72 S card to honor slain Israel Ath. Fac-simile of C & sworn Affidavid Letter	MB

47.	SC	'72 ARAB BARBARISM - Card showing pict. of Slain Israeli Ath. Eastman stamp club	MB
48.	C	'76 Austria '73 Organizing committee cancel + '75 Bobsled test run Oly Pict. Cancel	MB
49.	C	'76 Same but with '75 Luge test run Oly. Cnl	MB
50.	C	'76 Same '75 Slalom test run Oly. Cnl	MB
51.	C	'76 Same '75 Ski Jump test run cancel	MB
52.	**	'76 Austria B334, 336-8 MNH	CV 3.25
53.	C	'80 U.S. Meter slogan cancel- Its an Oly year for you - Ft. Laud. Fla	MB

SPORT STAMPS AND COVERS AND SOUVENIR CARDS

54.	PC	Italian Meter cancel for 3rd European Baseball Championships on Pc with scetch of pitcher	12.50
55.	FDC	Uruguay C313-7 Str. of 5 Reg. Cach C with Basketball cancel	3.50
56.	FDC	Israel 609-10 Cach Unadd. Chess	MB
57.	FDC	San Marino 621+ E26,27 Reg. AirMail C Chess	3.50
58.	FDC	New Zealand 547-51 MNH set displayed in limited Edition covers with commonwealth cancel	9.60+
59.	FDC	Same but 2 C Reg - Different sponser	9.60+
60.	FDC	Canada 642 bl 4 Bicycle cancel & cachet	MB
61.	FDC	Niger C88 150th Ann. cach and cancel Bicy.	MB
62.	O	Costa Rica C57-65 AV. Av. Sht set	53.85
63.	*	Italy 324-8, C62-5 OG FVF	62.85
64.	*	Soccer - 5 M Sets, 1 ss MNH	Est CV10.00
65.	C	U.S. Slogan cancel 1st all Soccer St. Exh	MB
66.	FDC	Ethiopia 378-82 3rd Africa football cup	4.50
67.	FDC	Sweden 524-24 Reg. Airmail F	Est 10.00
68.	MNH	Panama C47 MNH Soccer	5.00
69.	C	Great Britain 2 '66 world cup Covers & 1 Commonwealth games '70 Cach and Sp. Canc.	3.00
70.	FDC	Poland 1147,1149 bl & Rd Fencing Cachet, Cl.	MB
71.	FDC	Poland 766-8 Fencing cachet & Cnl unadd	3.00
72.	C	U.S. 2 Golf meter cancels for Westchester Classic from Hicksville, N. Y. 1980	MB
73.	-	Germany DDR 297-300 Presentation folder II Deutsches Turn und Sportfest	3.50
74.	C	U.S. S.P.I. Slogan Cancel Suntrapex '75	1.00
75.	FDC	Brasil 898 Sailboat cachet & cancel '59	MB
76.	**	Japan 1130 MNH Sheet of 20 (Scouting)	ME
77.	PC	Austrian PC with view of SOKOL hall in Tarnopol Mailed to Dobromil 28 -7-1907	10.00
78.	PC	Same View of SOKOL Hall in Sanok st. removed	MB
79.	FDC	Korea 799a Cach unadd wrestling	MB
80.	FDC	Korea 799 Commem cancel and cachet wrestling	MB
81.	C	India commercial cover with Field Hockey advertising cachet Limitarians & CO SIALKOT ^{br}	3.50
82.	FDC	France 801-4 Each on Multi colored Cach Cover with special cancel Rugby, jailai Basketball Mt. Climbing VF	Est 25.00
82.	PC	3 Maxim Cards Neth. 513, 514 Belg. B791	3.00
83.	**	Nicaragua 717-29 MNH VF	CV 15.85
84.	**	Panama C47a MNH AV F	CV 15.00
85.	O	Russia 559-68 (561 thin) used	CV 57.50
86.	*	Ecuador 377-81, C65-7 OG F	CV 54.75
87.	**	Panama c43-7 Bl of 4 some toneing and Perf seperations	CV 48.00
88.	*	Panama C43-7 MLH F	CV 12.00
89.	**	Panama C43-7 MNH F	CV 12.00
90.	*	Guatemala C171-6 MLH F	CV 28.00

91.	**	Monaco 544 Imperf Color Proof Signed	-----
92.	*	6 mint sport sets DDR GREECE MOROCO RUSSIA	7.00
93.	*	Italy 306-9 MLH F	CV 3.75
94.	*	7 Diff. Sport & Oly Sets non scott	est 7.50
95.	*	Viet Nam Yvert # 345-8 1963 sport set	MB
96.	*	Japan 417-20 3 NH 1LH	CV 17.50
97.	FDC	Jamacia 197-200 9th Cent. Am. Games cach	3.50
98.	*	Bulgaria 237-43 MLH	CV 108.50
99.	0	Bulgaria 237-43 Used Fine	CV 51.90
100.	0	Lichtenstein 300 +311	cv 34.00
101.	-	4 souv. cards for TURFPEX 74 (2 mint, 1 FDC of US 1528- 1 100th running of Ky. Derby MB	5.00
102.	-	2 Souv. cards of LOUPEX 74 (1 mint- 1 with FDCancel with US 1528)	MB 3.00
103.	-	Souv card OWENSPEX 74 with Hydroplane cancel	MB
104.	-	3 Sport Vignettes 1911 german sportfest, 1913 french gymnastic meet, 1914 N.Y. Field day	7.50
105.	PC	Italian multi colored Pc with special cancel for 1954 auto race TARGA FLORIO - PALERMO	10.00
106.	C	7 sport & Oly covers (Israel, Switz, Hungary, Ajman, 3 Canada) Nice lot	10.00
107.	FDC	Hungary 1057,59,61,C127 Stadium Cach & cnl	7.50
108.	**	Turkey 986-9 MNH	CV 17.00

Terms Used

0	Used	PC	Post Card
*	Mint	PS	Postal Stationary
**	Mint Never Hinged	-	Misc. Item
C	On cover	V	Vignette
FDC	First Day cover	SC	Souviner Card
CC	Commercial Cover	CV	Catalog Value
Est	Estimated value	MB	Minimum bid \$2.00
Cach	Cachet ed cover	cnl	Cancel

CLOSING DATE - MARCH 15, 1982

Send all bids to: Edwin E. Parrasch, 111 Large Ave., Hillsdale, NJ 07642 USA.

- OLYMPIC NOTES -

by SHERWIN PODOLSKY

Beginning with this column, I will preface paragraphs dealing with a specific topic with a heading. This, I hope, will make it easier for reference purposes.

1912 Olympics. Cliff Jeger reports discovery of a cover with an interesting variety of the postal cachet. Figure 1 illustrates the cover with the cachet in French.

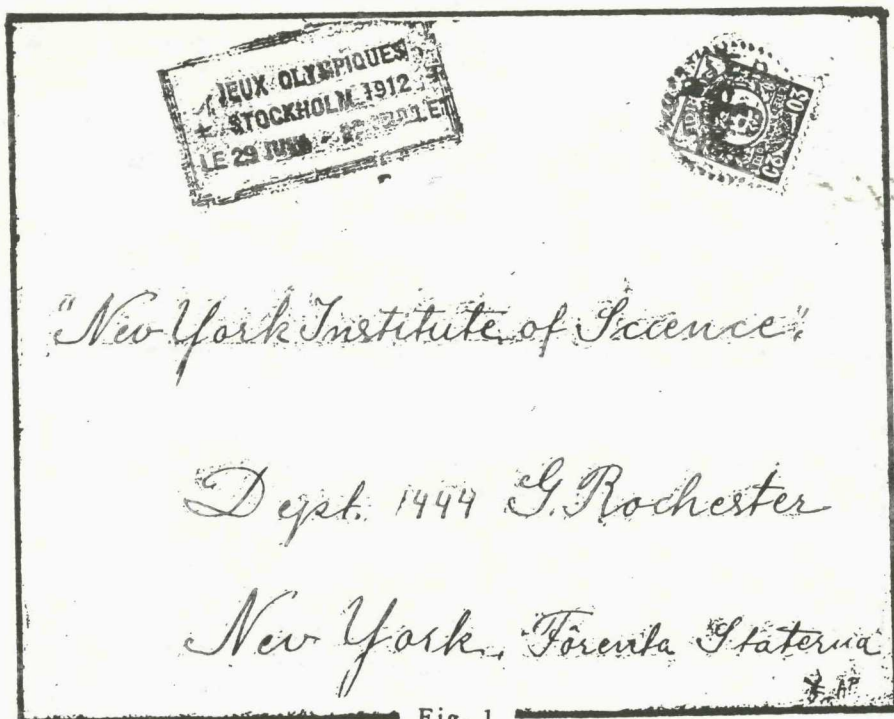


Fig. 1

French was the acknowledged international language. The cachet was applied at the Swedish port city of Goteborg on mail destined overseas. Thus, the cachet is believed to have been applied only on foreign mail.

The postmark details are unclear. It would have certainly helped to know the postmark date.

The cachet itself is near the top of the cover, thus leaving out the upper right portion of the frame line. From appearances, however, the frame line must have been intact on all four sides. A careful look will show that the frame is actually made of three lines.

The arrangement of details within the frame box suggests awkwardness and sloppiness. The frame is too tight at the right side. In fact, the double cross at the right and the letter "T" also at the right intrude into the frame. This suggests that there were two devices--one for the frame and the other for the wording.

Figure 1 shows the cover is addressed to the New York Institute of Science, Dept. 1444 G. Rochester, New York, Forenta Staterna. G. Rochester is the city of Rochester. Forenta Staterna is Swedish for United States.

The postal cachet is known on several covers addressed to the New York Institute of Science. Many of the covers are often toned and have pinholes from stapling the messages to the envelopes. Figure 1 shows evidence of toning but no staple or pin holes.

There are two more things to observe about Figure 1 before we go into the next illustration. Figure 1 has double crosses at the ends of the second line of text. Also, it is noted that at the bottom left, the top of the 3-line frame is broken. Similarly, the bottom of the 3-line frame picks up near the left without continuity to the left. Thus, there is evidence of a slight break in the frame sequence.

Figure 2 illustrates a cover of Stockholm dated October 8, 1912. The cover has several pinholes. The postal cachet is shown intact. A diagonal line across the cachet is actually a slight pencil marking.

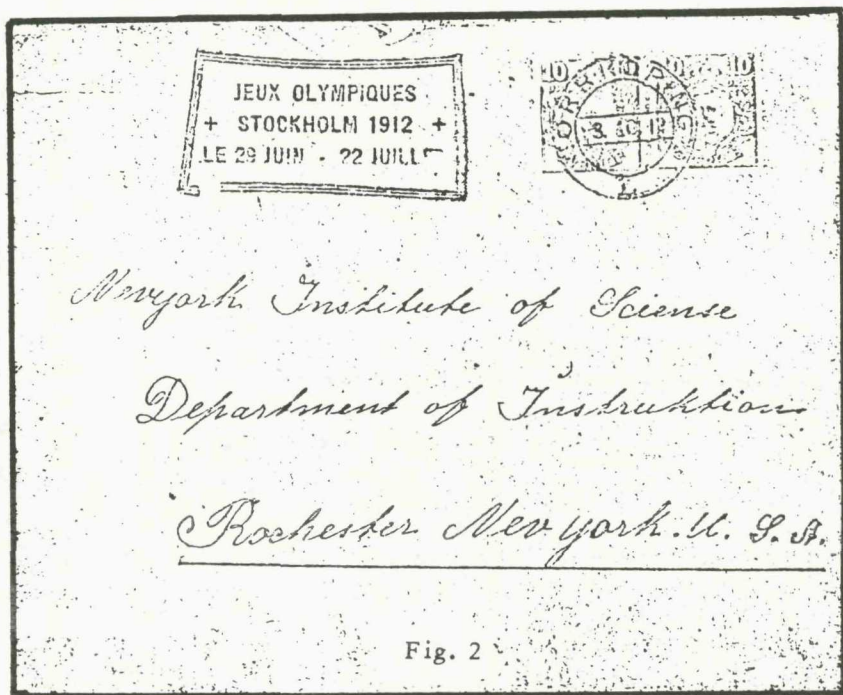


Fig. 2

The frame line now appears broken and stretched to accommodate the text for a more balanced impression. The double crosses are replaced with simple crosses. There is somewhat less space between the top line and the upper frame line in Figure 2 than in Figure 1.

There is a very definite gap at the bottom left in the frame at the precise spot where there is a slight break in Figure 1.

Many covers featuring the arrangement in Figure 2 show the last letters in the bottom line "ET" as incomplete or missing. "ET" is shown sharp and intact in Figure 1. Perhaps in stretching the frame line, some damage was done to those letters.

In Figure 1, the letters "IN" in "JUIN" are smeared. In Figure 2, the bottom portions of "IN" are weak impressions.

If parallel vertical lines are drawn to compare the line-up of the lettering in both examples, the congruities appear the same.

Figure 3 shows a cover postmarked at Visby, October 13, 1912 also with the postal cachet. The impression is rather good. There is weakness in the completion of the "T" in "JUILLET" and letters in the top line are slightly incomplete. Yet the frame line shows sharply. These impressions could be due to the manufacture of the device and the angle and strength of the hand applying the device.

Is the impression in Figure 1 legitimate? In my opinion, without having examined the original cover, it is. I believe the postal cachet in Figure 1 was an early impression of a canceller that later underwent modification.

Does any other reader have an example of a cover with the 1912 postal cachet to share?

Paris 1900. The IIInd Olympiad was held from May 14, 1900 to September 13, 1900. In tribute to the father of the Modern Olympics, Baron de Coubertin, that the Second Olympiad was awarded to France. However, his compatriots did not understand and follow him and the Games were held as secondary to the Paris World's Fair.

In complete despair, the Baron withdrew to the background and let the organizing committee of the exhibition take over. The word "Olympic" was banished from the announcements and programs and only international championships were held without any festive ceremonies. The events were held at separate times and places and additional events were added as the organizers saw fit, often at short notice.

Although 18 nations participated, the Paris Games went down in history of sport as the "Olympics of Chaotic Events." No official reports or bulletins were ever released by the organizers. Americans won most of the victories.

Whether to include 1900 as a part of an Olympic collection or exhibit has always been a problem to Olympic postal historians. Directly relevant Olympic philatelic material seems non-existent.

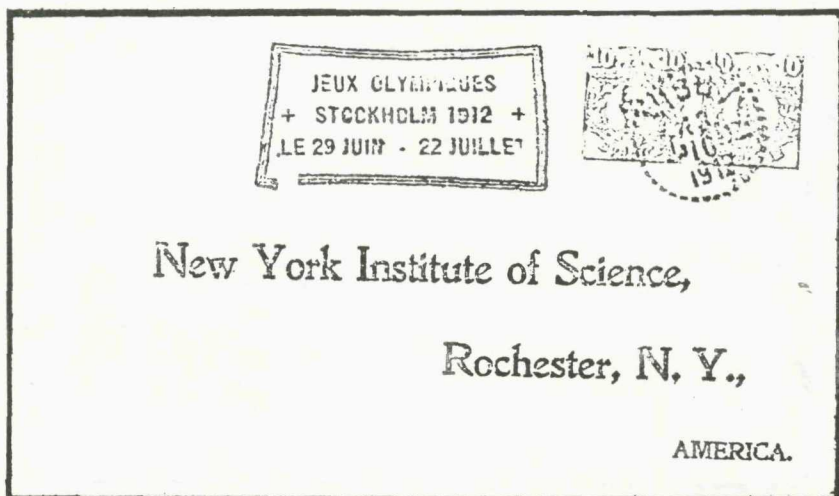


Fig. 3

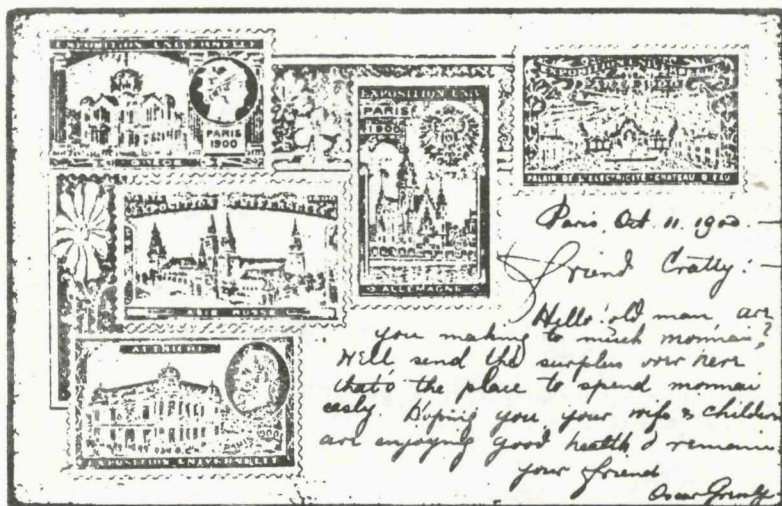


Fig. 4

Some collectors show instead the Greek overprints of 1900-01 on the 1896 Greek Olympic stamps. Still, this does not make reference to or have any connection with the Paris Games.

The picture postcard in Figure 4 comes close. The picture side is in multicolor showing views of various buildings presumably at the Fair. All the buildings are in stamp-like designs with simulated perforations. At upper left is a purple design featuring Hermes' head and a building attributed to Greece. The building, however, has a rather contemporary appearance with columns not reminiscent of ancient Greece. Other designs include buildings attributed to Germany (Allemagne in French), Asiatic Russia (Asie Russe), and the Palace of Electricity, and Austria. The picture side has a message dated October 11, 1900.



Fig. 4A

Figure 4A shows the address side of the postcard. The stamp appears to be France Scott No. 91 or 106. There is a double circle hand canceller inscribed PARIS EXPOSITION SUFFREN. The inner circle reads 6h S/11 OCT/00. The card is addressed to Wilkinsburg, Pa., USA and has a portion of an arrival cancel dated October 22.

It is interesting that the postcard gives prominence to Greece in its picture. With a proper write-up, the thematic aspect of the postcard can fill in for the gap presented by the 1900 Paris Olympic Games.

Do any other readers have solutions in representing the Second Olympiad philatelically?

LETS POOL OUR OLYMPIC AND SPORTS KNOWLEDGE

Edited by Edward B. Epstein

Sports and Olympic philatelists have, collectively, a great deal of knowledge, which when pooled, can be of mutual benefit. Questions concerning sports and Olympic philately will be assigned a number and published in JSP. Responses to questions will be printed in subsequent issues. Address all questions to your editor: Edward B. Epstein, Paterson Board of Education, 33 Church Street, Paterson, NJ 07505 USA.

- A- 82 Again, we turn to Lugi Gianoli's book "Horses and Horsemanship Through the Ages" for information about Russian horsebreeding as publicized on the Russian issue of Jan. 23, 1968 (Scott 3433-37). Statistics from "The Production Yearbook of the Food and Agricultural Organization of the United Nations" provides us with a figure of 9.1 million horses in Russia. Horse breeding in Russia goes back to the second half of the Eighteenth Century, when the practice became quite developed. At that time many foreign thoroughbred studs were introduced to improve the native breeds. Of the 16 million horses in the Soviet Union, in 1939, 1.2 million were used for breeding purposes.

The 4k illustration on the Russian stamp set is entitled "Thoroughbred and Horse Racing." Throughbreds have been bred in Russia- the notable of which is the Don horse, a combination of Karabagh, Turkomen, and Persian studs, and local broodmares.

Among the principle horses with Arab blood are the Kohilan, Siglavi, and Habdan, one of which is shown on the 6k stamp "Arab Mare and Dressage."

Perhaps the most notable of all Russian strains are the "Orlovski Trotters" (Scott 3435). Count Alexis Orlov created the breed using the stud "Smetanka" in 1777. The beautiful animal, whose skeleton is in the Orlov Museum, stood about 15.3 hands high. Toward the end of the last century, through the crossing of the Orlov with American trotters the so-called Russian trotting breed was created.

The 12k stamp (Scott 3436) named as "Akhaltekin" (spelled incorrectly "Altekin" in the Scott catalogue) is no doubt the Arhal-teke breed which is raised in Turkmenistan, Kazakhstan, and the south.

This gray Russian saddle horse sports an excellent reputation in Europe. One example is "Absent", ridden by Sergey Filatov (gold medal winner) of the Grand Prix for dressage at the Rome Olympic games.

The "Donskay Race Horse" is the highest value of the set (Scott 3437). Again, Scott mis-identified this stamp which is in reality cheval "Boudennovskaja". The Budenny breed is raised in the region around Rostov. Created under the personal direction of Marshal Budenny, crossing Don horses with selected English throughbreds, this strain after twenty-five years, has developed into a first class breed.

- A- 78 Your friend is correct. Slogan meter marks publicizing the 1972 Munich Olympic games were used by the following German Counsel offices in the United States:

New York German Counsel Office	P.B. 570324
Chicago German Counsel Office	P.B. 503524
Boston German Counsel Office	T-N 601186

In addition to the above, V.R. Busek's Olympic Meter Mark Catalog lists the following meter marks for the 1972 Munich Olympic games but does not identify their usage. They also may be for German Counsel offices.

Cleveland, Ohio- No. 548756
Philadelphia, Pa.-No. 588127
Washington, D.C.- No. 867427
Detroit, Mich. - No. 225129

Verification of the above meter mark numbers and their office usage is requested by your editor.

- Q- 87- What stadium is pictured in the background of the August 31, 1957 French issue (Scott 845) commemorating the International University games in Paris?
- A- 87- The stadium of Charlety, outside of Paris, forms the background of the International University games issue picturing Leo Lagrange, French Minister for Sport between 1936 and 1940 who was killed during W.W.II.

BOOK REVIEW

"MANUAL OF PHILATELIC JUDGING," APS Judges Accreditation Committee, Bernard A. Hennig, Chairman. 1981. Published by the American Philatelic Society, Inc., P. O. Box 800, State College, PA 16801. \$4.40 to APS members, \$5.50 to others. 58 numbered pages, soft cover. Page size 4 inches x 9 inches.

At last, the APS Judges Accreditation Committee has revealed much of its mysterious secrets. Hopeful and experienced exhibitors will find much guidance in preparing or improving their exhibits. The title is unfortunate because nearly all the information is also of value to exhibitors. A sub-title should have been "Guide to Exhibitors."

There are six chapters, three of which are general: judging an exhibit of traditional philately, the presentation aspects of philatelic judging, and APS regulations and definitions applicable to exhibitions.

One chapter of special interest to SPI members is: judging an exhibit of topical or thematic philately. Having attended one of her critiques, I read much of Barbara de Violini's expertise in that chapter.

In a section on "philatelic elements" there are the following notes:

"If meter strips are included because of a slogan pertinent to the exhibit, the meter must have a valid amount of postage showing - not a ".00" or a $\frac{1}{2}$ -cent value."

"Other items that would cause an exhibit to be marked down include emissions from the "sand dune" countries that are designed primarily to attract the collector and not to carry the mail, and the CTOs that appear from many Soviet bloc countries and from some countries of Latin America. In general, the use of material from postal agencies whose philatelic practices are at times questionable shows poor judgment on the part of the exhibitor."

"Picture postcards may be used in an exhibit only if it can be shown that the card has passed through the mails."

This is a reference to be in every collector's library whether he plans to exhibit or not. There is much to challenge one's way of collecting if he ever hopes to exhibit.

There is also guidance for exhibiting at international (FIP) exhibitions although it is scattered throughout the text.

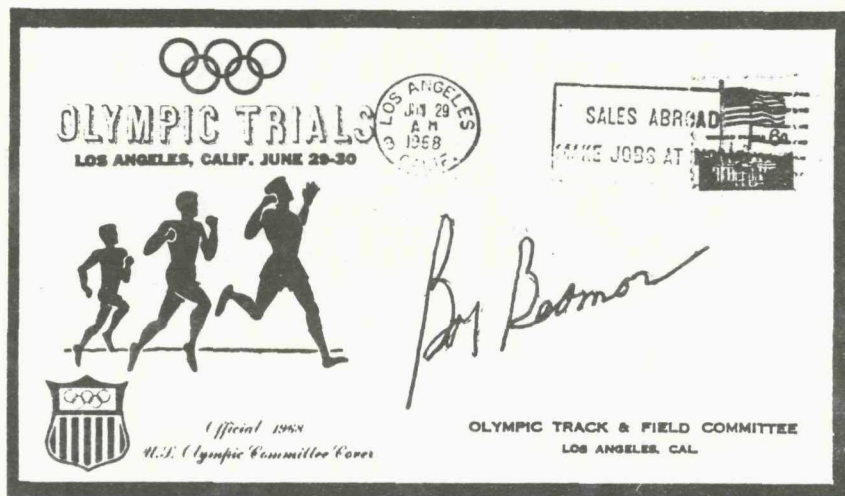
-- Sherwin Podolsky

OLYMPIC SIGNATURES

FROM THE
EDWARD B. EPSTEIN COLLECTION

UNITED STATES

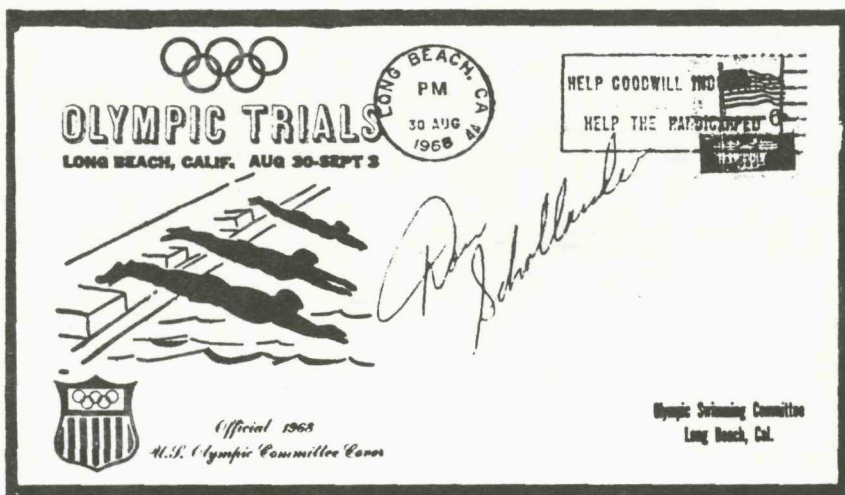
LOS ANGELES, JUNE 29, 1968 U.S. OLYMPIC COMMITTEE COVER SIGNED BY
BOB BEAMON, THE DAY HE WON THE BROAD JUMP TRIALS WHICH DETERMINED
HIS REPRESENTATION ON THE U.S. TEAM AT THE MEXICO CITY OLYMPIAD.



DURING THE 19TH. OLYMPIC GAMES AT MEXICO CITY BOB BEAMON ACHIEVED
A WORLD-RECORD-SHATTERING BROAD JUMP OF 29'2½" FOR THE GOLD
MEDAL. THIS FEAT IS CONFIDENTLY PREDICTED AS ONE THAT WILL
LAST INTO THE 21ST. CENTURY.

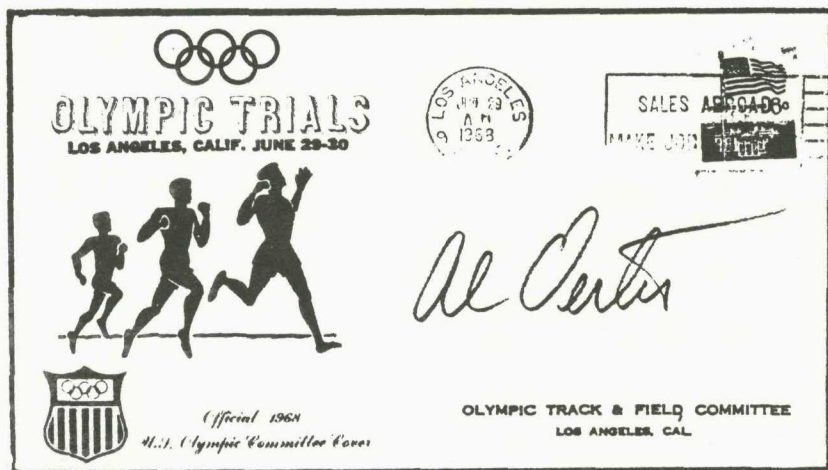
UNITED STATES

SIGNATURE OF DONALD SCHOLLANDER, 1ST. IN THE 200 M. FREE STYLE SWIMMING ON AUG. 30, 1968, LONG BEACH, CALIF., U.S. OLYMPIC COMMITTEE NATIONAL SWIMMING TRIALS COVER. PRE-OLYMPIC TRIAL COMPETITIONS DETERMINE THE ATHLETES THAT REPRESENT THE U.S. AT THE MEXICO CITY OLYMPICS

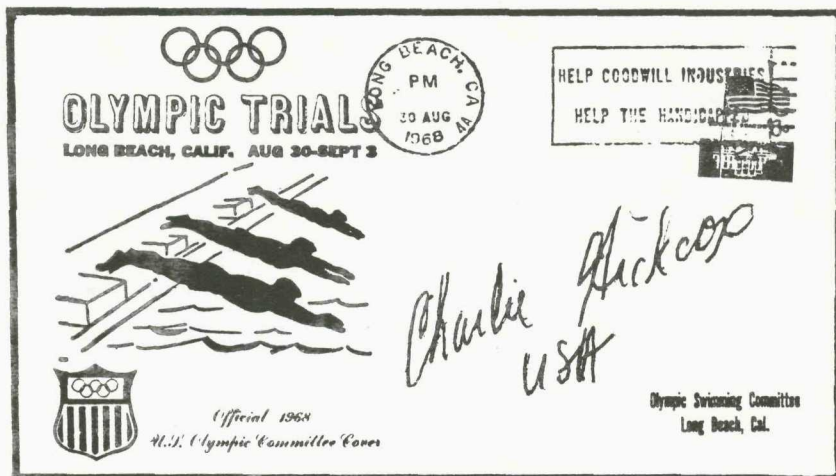


WITH 4 GOLD MEDALS FOR VICTORIES IN THE 100 M. AND 400 M. FREE STYLE AND THE 4x100 M. AND 4x200 M. FREE STYLE RELAY (ANCHOR MAN) AT THE TOKYO OLYMPIAD, SCHOLLANDER WON A GOLD IN 4x200 M. FREE STYLE RELAY (ANCHOR MAN) AND A SILVER IN 200 M. FREE STYLE SWIMMING AT MEXICO CITY,

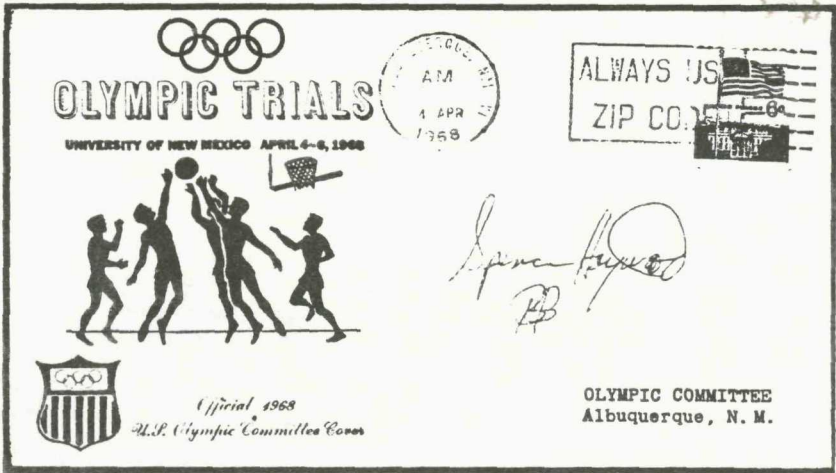
UNITED STATES



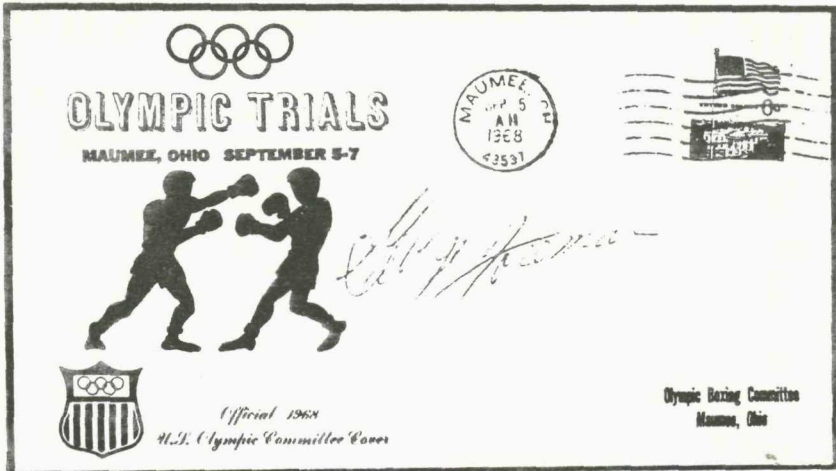
SIGNATURES OF AL CARTER, ONLY FOUR TIME OLYMPIC DISCUS THROWING GOLD MEDALIST-1956, 1960, 1964, 1968 (ABOVE) AND CHARLES HICKCOX - WINNER OF 3 GOLDS-200 AND 400 M. IND. MEDLEY, 4X100 M. MEDLEY RELAY, 100 M. BACKSTROKE SILVER



UNITED STATES



SIGNATURES OF SPENCER HAYWOOD, GOLD MEDALIST ON U.S. 1968 BASKETBALL TEAM, SCORED 145 POINTS IN 9 GAMES (ABOVE) AND GEORGE FOREMAN; DEFEATED U.S.S.R.'S I. CHEPULIS FOR 1968 HEAVYWEIGHT BOXING GOLD MEDAL (BELOW)



- CENTRAL AFRICAN REP.: 9/4/81--Great Sailors and Yachtsmen
40fr, 50fr, 60fr, 80fr, 100fr, 200fr, 500fr s/s
1500 fr gold stamp plus 1500fr gold s/s
- DJIBOUTI: 10/15/81--CHESS--50fr (13th century Swedish
pieces), 130 (19th century Chinese pieces).
- EGYPT: 9/14/81--WORLD BUILDING BUILDING CHAMPIONSHIPS--
45 milliemes.
- INDONESIA: 9/19/81--NATIONAL SPORTS WEEK--75 rupiah
(sky diving), 100 rp (deep-sea diving), 200 rp
(equestrian events).
- KOREA (DPR): 5/25/81--100th ANNIVERSARY OF THE INTERNATIO
NAL GYMNASTICS FEDERATION--10 chon, 15ch,
20ch, 25ch, 30ch, 70ch s/s, plus 1 won s/s
combining the 5 stamps and the 70ch s/s.
- LESOTHO: 10/30/81--Duke's Award Scheme--6lisente; 7s, 25s
40s (mountain climbing), 75s and 1.40 maloti s/s
- MAURITIUS: 10/26/81--Duke's Award Scheme--25¢ (expedition
mountaineering), 1.50 rupees (camping), 2.50
re, 5re.
- NIUE: ESPANA '82--30¢, 35¢, 40¢, (3 values each) (soccer
scenes), plus s/s with airtax uniting designs.
- ST. LUCIA: 9/81--Duke's Award Scheme--10¢, 35¢, 50¢
(physical recreation), \$2.50.
- ST. VINCENT (GRENADINES): 10/9/81--GAME FISH--10¢ (bar
jack), 50¢ (tarpon), 60¢ (cobra)
\$2 (marlin).
- SIERRA LEONE: Award Schere --9/30/81--6¢ (physical educa-
tion), 31¢, 1 leone (2).
- SOLOMON IS.: Duke's Award Scheme--9/14/81--8¢, 25¢, 45¢
(canoeing), \$1.
- SWAZILAND: Duke's Award Scheme--11/5/81--5¢ (basketball),
20¢ (expeditions), 1em.
- TOKELAU: 11/4/81--SPORTS (IV)--10¢ (pole vault), 20¢ (vol
leyball), 30¢ (running), 50¢ (volleyball).
- TRISTAN DA CUNHA: 9/14/81--Award's Scheme--5 pence (hiker)
10p (camping), 20p (map reading), 25p.
- TURKS & CAICOS IS.: 8/21/81--DIVING--15¢, 40¢, 75¢ (wreck
diving), \$1 (diving & dolphins),
\$2 s/s.
- U.S.S.R.: 6/18/81--SPORTS--4 kopecks(runner), 6k (foot-
ball players), 10k (discus thrower), 15k
(boxers), 32k (female diver).

MEMBERS BOURSE

Bourse rates are 2¢ per word with name and address free. Send ad and remittance to the editor. For payment under \$1.00, please send mint commems. Address and closing dates are on the fourth page of each issue.

FOR SALE: 1932 Olympic Winter Games material - skier labels (SPI #1-4) English -75¢, French -\$1.00, Spanish -\$2.50, FDC -K11 - \$25.00, FDC - D3 - \$25.00. Glenn A. Estus, Box 451, Westport, NY 12993.

WANTED: Slogan cancellations from any Olympic Winter Games. Write first with offers. Glenn A. Estus, Box 451, Westport, NY 12993.

WANTED: Equestrian sports material. Horse racing (flat, harness and steeplechase) and Equestrian event (jumping and dressage) stamps, covers and cancellations needed. Tim Nagel, 1920 Hobson Rd., Fort Wayne, IN 46805.

WANTED: Aquatic stamps. Beach scenes, boating, canoeing, diving, fishing, kayaking, rafting, rowing, sailing, skin or scuba diving, swimming, swimming pools, water polo, water skiing, etc. Mint or cancelled. Singles or sets. Covers. Souvenir sheets. Brian V. Kelly, 505 Fifth Ave., North, Great Falls, MT 59401.

DID YOU subscribe to my 1980 Private Olympic Cachets on U.S. Postal Stationery? If you did, you received 53 different pieces of stationery for your collection. I can no longer provide the complete collection as many earlier items are long sold out. I can make up a few collections of 36 different for \$22.00 postpaid. John La Porta, 3604 S. Home Ave., Berwyn, IL 60402.

LAKE PLACID Olympic Torch Run cancellations from 10 different cities on two color cacheted (JLP Cachets) covers. Only 50 sets made. \$12.00 per set plus SASE. John La Porta, 3604 S. Home Ave., Berwyn, IL 60402.

LAKE PLACID Olympic venue cancellations, set of 9 different of two color cacheted (JLP Cachets) covers. Only 100 sets made. \$10.00 set plus SASE. John La Porta, 3604 S. Home Ave., Berwyn, IL 60402.

SUBSCRIPTIONS are now being accepted for JLP Cachets 1984 Private Olympic Cachets on U.S. Postal Stationery. Send SASE for information sheet and sample. John La Porta, 3604 S. Home Ave., Berwyn, IL 60402.

**Swap your duplicates—sell your surplus—
through the Members Bourse**

A SIMPLIFIED CHECKLIST OF COMPETITIVE SPORTS ON STAMPS

Bob Bruce and Jim Yarwood

Section 34

1980 Supplement

<u>Scott</u>	<u>Minkus</u>	<u>Gibbons</u>	<u>Michel</u>	<u>Yvert</u>
<u>Afghanistan</u>				
976-79	1189-92	852-55	1236-39	
<u>Algeria</u>				
642-43	834-35	770-71	753-54	714-15
<u>Andorra (French)</u>				
276	355	F302	304	283
278	360	F307	309	288
<u>Andorra (Spanish)</u>				
121-23	131-33	a26-28	133-35	126-28
<u>Angola</u>				
	731-32	760-61		619-20
<u>Anguilla</u>				
375-80	404-09	389-94	373-78	342-47
380a	410	MS395	B1 36	B1 30
428a	463	MS448		B1 35
<u>Antigua</u>				
559-60	594-97	632-35	558-61	559-62
561	598	MS636	562/B1 46	B1 46
571	608		572/B1 47	
<u>Australia</u>				
750	849		723	
<u>Bangladesh</u>				
188a	198	MS163		
<u>Barbuda</u>				
	502-05	489-92	474-77	457-60
	506	MS493	478/B1 49	B1 48
<u>Belgium</u>				
B991	2223	2593	2025	1972
<u>Belize</u>				
	494-501		501-08	487-94
	503		509-10/B1 20	
	502		B1 21	
<u>Benin</u>				
469-73	785-89	225-29	486-70	931-55
<u>Bermuda</u>				
404	395	428	393	394
<u>Bolivia</u>				
	1084		B1 91	
	1086		B1 92	
	1085		B1 93	
			B1 96	
	1080		B1 98	
	1081		B1 99	

<u>Scott</u>	<u>Minkus</u>	<u>Gibbons</u>	<u>Michel</u>	<u>Yvert</u>
<u>Bolivia</u> (Cont'd)				
	1078		B1 101	
	1079		B1 100	
	1076		B1 102	
	1077		B1 103	
<u>Bophuthatswana</u>				
	65	65		65
<u>Brazil</u>				
1698	1887	MS1842	1770/B1 42	B1 41
1699-1701	1893-95	1848-50	1776-78	
<u>Bulgaria</u>				
		2837-42	2877-82	2536-40
		MS2843	2883/B1 101	B1 92
2687-92		2854-59	2853-58	
2693		MS2360	2859/B1 99	
			2894-99	2550-56
			2900/B1 103	B1 94
			2901/B1 104	
2706-07	2958-59	2873-74	2914-15	
<u>Burma</u>				
277-79		287-89	278-90	188-90
<u>Burundi</u>				
570-78		1357-65	1518-26	824-32
C282		MS1366	1527/B1 113	B1 110
<u>Cameroun</u>				
C287-90	1019-22	887-90	934-37	A301-04
<u>Canada</u>				
848	942	971	759	726
862	956	985	773	741
<u>Cape Verde</u>				
403-08		475-80	407-12	405-10
409		MS481	413/B1 1	
<u>Central African Republic</u>				
C234-27	828-31	694-97	672-75	A215-18
C228	832	MS698	676/B1 85	B1 40
417-20,		701-07	679-84	427-30, A224-26
C231-32				
C233		MS708	685/B1 86	B1 42
			686	
			686/B1 93	
			687/B1 94	
425-29	835-39	717-21		418-22
<u>Chinese People's Republic</u>				
1582, 1583, 2816, 2818,		2961-64	1590-93	2312-15
1581, 1584, 2817, 2819				
1640-44	2877-81	3022-26	1651-55	2380-84
<u>Christmas Island</u>				
93-4	114-15	120-21	122-23	134-35
<u>Colombia</u>				
878	1440	1501	1417	740
885	1482	1543	1459	777
C695	1483	1544	1460	A657
<u>Congo</u>				
C266-70	922-26	711-15	721-25	A264-68

<u>Scott</u>	<u>Minkus</u>	<u>Gibbons</u>	<u>Michel</u>	<u>Yvert</u>
<u>Congo (Cont'd)</u>				
C271-74	917-20	716-19	721R-25R	A269-72
C275	921	MS720	726-29	B1 32
C276-80	934-38	724-28	730/B1 22	A280-84
C281	939	MS729	736-40	B1 24
C292-95	982-85	777-80	741/B1 23	A288-91
C296	986	MS781	786-89	B1 26
566	897	782	790/B1 26	602
			791	
<u>Costa Rica</u>				
C782-85	1360-63	1172-75	1065-68	762-65
<u>Cuba</u>				
		2611-18	2454061	2170-77
		MS 2619	2462/B1 61	B1 60
		2672-74	2515-17	2225-27
<u>Cyprus</u>				
535-37	538-40		522-24	517-19
<u>Czechoslovakia</u>				
2289	2704	2510	2551	2376
2290-92	Min 2697-99	2503-06	2544-46	2368-70
2293-96	2700-03	2506-09	2457-50	2371-74
2317-18	2725-26	2530-31	2571-72	
<u>Djibouti</u>				
C128	808	777	265	A134
			B1 12	
C129-31	817-19	785-87	273-75	A135-37
C133-34	815-16	783-84	271-72	
			271/B1 16	
			272/B1 17	
<u>Dominica</u>				
664-67	707-10	701-04	667-70	642-45
668	711	MS705	671/B1 61	B1 62
<u>Ecuador</u>				
991-92,	2070-03	1803-06	1864-67	996-67, A712-13
C695-96				
993	2074	MS1807a	B1 95	
		MS1807b	B1 96	
<u>Equatorial Guinea</u>				
				155(a)-(f), A119 (a)-(b)
				159(a)-(d), A123
<u>Ethiopia</u>				
974-76	1210-12	1169-71	1060-62	979-81
<u>Finland</u>				
649	907	975	873	836
<u>France</u>				
1714	2424	2375	2225	2108
<u>Gabon</u>				
C227-28	771-72	710-11	720-21	A226-27
C228a	773	MS712	B1 38	B1 34
C235-37	785-87	724-26	733-35	A234-36
C237a	788	MS727	736-38/B1 39	B1 35
C238-40	793-95	735-37	746-48	A237-39
	796	MS738	749-51/B1 40	B1 36

<u>Scott</u>	<u>Minkus</u>	<u>Gibbons</u>	<u>Michel</u>	<u>Yvert</u>
<u>Germany</u>				
B570	2246		1040	
B574-76	2256-58	1924-26	1046-48	896-98
<u>Germany (Berlin)</u>				
9NB168-70	621-23	B593-95	621-23	582-84
<u>German Democratic Republic</u>				
2063, 2064, 2381-84		E2188-91	2479-81	2141-44
B189, 2065				
2066	2385	MSE2192	2482/B1 57	B1 55
2098, B190, 2406-08		E2224-26	2503-05	2164-66
2099				
2199, B192, 2431-33		E2247-49	2528-30	2188-90
2120				
2121	2434	MSE2250	2531/B1 60	B1 58
<u>Ghana</u>				
710, 711	957, 958	898-901	806-07	
713	960	MS902	810, 811/B1 81	
720, 721	962, 963		835, 836	
723	765		839, 840/B1 84	
<u>Great Britain</u>				
924	1007	1134	850	955-58
925	1008	1135	851	956
926	1009	1136	852	957
927	1010	1137	853	958
<u>Greece</u>				
1362-66	1606-10	1524-28	1421-25	1397-1401
<u>Greenland</u>				
128	135	117	124	112
<u>Grenada</u>				
980-83	1047-50	1054-57	1021-24	908-11
984	1051	MS1058	1025/B1 88	B1 86
997	1069	1076	1042	927
1010, 1013	1082, 1085	1089, 1092	1055, 1058	939, 942
<u>Grenada Grenadines</u>				
	393-96	391-94	394-97	338-41
	397	MS395	398/31 50	B1 49
<u>Guinea-Bissau</u>				
387-90,			551-56	126-29, A60-1
C18-9				
C20			557/B1 166	B1 25
402			532	109
<u>Haiti</u>				
731-33,	1507-17		1374-84	780-82, A602-09
C3490-506				
<u>Hong Kong</u>				
367	384	393	366	360
<u>Hungary</u>				
C418-25	3694-3700	3323-29	3433-39	A427-33
C425	3701	MS3330	3440/B1 142	B1 147
2649	3702	3322	3420	2729
C427	3708	MS3338	3449/B1 145	B1 148
<u>Iceland</u>				
531	644	586	555	508

<u>Scott</u>	<u>Minkus</u>	<u>Gibbons</u>	<u>Michel</u>	<u>Yvert</u>
<u>India</u>				
873	1147	943	825	620
868-69		948-49	834-35	628-29
882	1165	961	849	646
<u>Indonesia</u>				
1067-69	1912-14	1563-65	948-50	863-65
	1915	MS1566	951/B1 32	B1 31
1070-72	1908-10	1567-69	953-54	866-68
1073	1911	MS1570	955/B1 33	B1 32
	1924		968/B1 35	B1 34
1082	1926	1580	969	877
<u>Iraq</u>				
968-71	1496-99		1048-51	958-61
972	1500		1052/B1 33	B1 31
<u>Isle of Man</u>				
175	179	178	165	158
<u>Italy</u>				
1401	1906	1641	1693	1425
<u>Ivory Coast</u>				
C66-9	697-700	620-23	649-52	A71-4
C70	701	MS624	653/B1 16	B1 16
<u>Jamaica</u>				
481	506	491	481	494
489,	507-11	497-50	487-91	495-99
490a-d				
<u>Japan</u>				
1419	1504	1604	1445	1344
<u>Jersey</u>				
231-35	258-62	233-37	223-27	217-21
<u>Jugoslavia</u>				
1460-61	2096-97	1851-52	1821-22	
1463-66	2099-102	1866-69	1824-27	1707-10
1472		1876	1833	1714
RA31		1901	272	1738
		1 917	273	1757
<u>Kiribati</u>				
361	382	122	359	38
<u>Korea</u>				
1218	1211	1420		1074
<u>Korea (People's Republic)</u>				
				A13
				1615A-B
				1615C
				1711-17
		N2004-10		
		MSN2011		
<u>Kuwait</u>				
820-29	879-88	863-72	862-71	844-53
<u>Lesotho</u>				
293, 295,	415-19	392-96	293, 295, 292,	395-99
292, 294,			294, 291	
291				
296	420	MS397	296/B1 5	B1 6

<u>Scott</u>	<u>Minkus</u>	<u>Gibbons</u>	<u>Michel</u>	<u>Yvert</u>
<u>Liberia</u>				
862-67	1361-66	1230-35	1168-73	868-73
868	1367	MS1236	1174/B1 95	B1 94
<u>Libya</u>				
848, 849	797-816	949-68	778-97	815-34
850, 851, 852				
<u>Luxembourg</u>				
843	1236	1048	1011	961
<u>Malagasy Republic</u>				
608-09, C175-76	903-06	436-29	863-66	641-42, A180-81
<u>Maldives</u>				
856-59	886-89	867-70		810-13
860	890	MS871		B1 64
<u>Mali</u>				
C379-80	1014-15	746-47	749-50	A374-75
C380a	1016	MS748	751-52/B1 12	B1 12
369, 370, 371	1034, 1035, 1036	761, 762, 763	764, 765, 777	
C383-85	1024-26	751-53	755-57	A381-83
C385a	1027	MS754	B1 13	B1 13
C399-401	1064-66	791-93	794-96	A397-99
C401a	1067	MS794	B1 14	Noted
<u>Mauretania</u>				
440-45	752-57	645-50	671-76	439-44
446-49	759-62	652-55	680-83	446-49
450	763	MS656	684/B1 27	B1 27
C196-200	773-77	667-71	691-95	A195-99
C201	778	MS672	696/B1 29	B1 29
464-67	791-94	673-76	699-702	462-65
468	795	MS677	703/B1 30	B1 30
<u>Mexico</u>				
1205-07	1997-99	1545-47	1718-20	909-11
<u>Monaco</u>				
1221-24	1452-55	1422-25	1415-18	1218-21
1225-26	1456-57	1426-27	1419-20	1222-23
<u>Mongolia</u>				
1097-1103	1267-73	1245-51	1271-77	1045-51
1104	1274	MS1252	1278/B1 61	B1 63
1106-12		1261-67	1287-93	1052-58
1113		MS1268	1294/B1 63	B1 66
1114-20	1299-305	1282-88		1067-73
C144	1306	MS1289		B1 70
<u>Montserrat</u>				
421-27	449-55	468-74	424-30	429-35
427a	456	MS475	B1 23	B1 22
<u>Mozambique</u>				
701-06	891-96	825-30	765-70	759-64
<u>Netherlands</u>				
B562-63	1308, 1309		1156-57	
B564	1317	1340	1164	1134
<u>Netherlands Antilles</u>				
B174-77	778-81	729-32	425-28	609-12

To be continued in the next issue

REVIEWS

Petrasek, Jaroslav, The Catalogue of All Postal Material About the Theme of Basketball. Cesky-Brod, Czechoslovakia: Author, 1980, 54 pp. (reviewed by Bob Bruce).

This interesting catalogue is a continuation of the author's original publication in 1977 (reviewed on p. 81 of the January-February, 1979, issue of JSP). Page size of $5\frac{1}{2}$ x 8 and a soft cover are continued. The text is in Czech, with most duplicated in English. The catalogue numbers are from Yvert.

The booklet has sections devoted to a checklist of basketball stamps; envelopes, card, and maximum cards; Japanese cancels; Japanese towns; cancels, meter cancels, and machine cancels; and stationary and FDCs.

No price is indicated; contact the compiler at Zborovska 1025, 282 23 Cesky Brod, Czechoslovakia.

* * * * *

Trachtenberg, Henri, Sport/Olympiques & Scoutisme/Catalogue/1982-83 (Catalogue of Sport, Olympics and Scouting--1982-83). Paris: Author, 1981, 134 pp., 50 francs (\$10.00 U.S., postpaid; \$2.00 extra by air mail) (reviewed by Bob Bruce).

This is my sixth (or more) review of Trachtenberg's excellent publication; veteran SPI members are familiar with it. Basic information will be repeated, almost word for word, for the benefit of newer readers.

The catalogue lists all sports, scouting, and youth organization stamps (arranged chronologically by country); data include year of issue, Trachtenberg checklist number, Yvert catalogue number, description, quantity issued, and price in French francs.

The particular strength of this catalogue is its coverage of imperforate issues and miniature sheets, and particularly is listing of quantities issued. One must be cautious in interpreting the press-run data; occasionally the figure given may represent the number of complete sets issued rather than the number for the higher denominations.

Although the catalogue is written in French and although Yvert catalogue numbers are used throughout, neither offers a severe handicap. Yvert numbers provide yet another frame of reference for many sport collectors, especially in southern Europe. Whenever, like some other major catalogues, Yvert gets chary about listing the issues of certain countries, no catalogue numbers are available for final reference. However, Trachtenberg still tries his best to include all known issues.

Trachtenberg is a regular advertiser in JSP; check this issue for his address when ordering.

* * * * *

Trachtenberg, Henri, Sport/Olympiques/Catalogue/1982-83 (Catalogue of Olympic Sport, 1982-83). Paris: Author, 1981, 34 pp. (reviewed by Bob Bruce).

This booklet is a listing of Olympic issues through 1980; year, country, Yvert catalogue number, and price in French francs are included. In past editions this material has been included in Trachtenberg's larger catalogue, reviewed above. No specific information was

supplied as to the cost; it may be included with purchases of the larger publication.

The advantages and handicaps of the larger catalogue apply to the smaller Olympic section.

NEWS OF OUR MEMBERS

NEW MEMBERS

- 1204R - Francesco Uccellari, Via Luca Della Robbia No. 1, 40138 Bologna, ITALY - collects basketball, baseball & Summer Olympics by Bob Bruce
- 1205R - Maria Bajema, 229 Cresent St., NE, Grand Rapids, MI 49503 - collects ice hockey by Joe Lacko
- 1206R - Conrad J. Klinkner, 524 Ave. #6, Redondo Beach, CA 90277 - collects Olympics, especially Host Countries, covers & cards by Peg Jones
- 1207R - David G. Casdorff, Box 1458, Monrovia, CA 91016 - collects folk sports, yacht racing, aircraft competetion, auto racing & soccer by John La Porta

SPONSORS

- 815S - J. E. Smiles, Oxbridge, ENGLAND
- 905S - Marilyn Savard, St. Gilles-Lotiniere, CANADA

CHANGE IN NAME

- 1182S - Mrs. Faye Dagan (was Mrs. Koszta)

Our new member, Maria Bajema, received first prize for her "Sports on Stamps of Canada" in the K.P.S. Club October show in Grand Rapids, MI. The exhibit was also judged Best in Show. . . . Joe Lacko also received a first place showing at the Queen City Stamp Club show held in Clark, NJ. The title of Joe's exhibit was, "In the Shadow of the Olympic Flame." The exhibit was composed of covers.... any member who has received any awards should drop a note to the editor for this column....

It is with a heavy heart that we must report the death of our founding member, Robert M. Bruce. We have been notified by Bob's wife, Jeanne, that he passed away Dec. 31, 1981 of a massive coronary. He will be sadly missed by us all.



SOCCER

BRAZIL-1950-\$5, imperf. change of color, scarce, (C79)	24.00
DAHOMY-1970, Brazil-Italy surch. SILVER (C126)	38.00
FRANCE-1977, 0.80 imperf. (1549)	10.00
do—De Luxe Sheet	35.00
do—Die Proof, scarce	115.00
GABON-Munich Souv. Sht. Trial Color	95.00

MALI-1977, imperf. cpt. (C311/13) 6.00
do—Die Proof 285.00

We have one of the finest selections of SOCCER and have been serving Philatelists for over 50 years. Our experience and EXCEPTIONAL selection of almost all Topicals are at your disposal.

We accept U.S. Postage at face, (no Spec. Del.), Cash with order. Subject to prior sale! Satisfaction Guaranteed or Refund.

S. SEREBRAKIAN, INC.
P.O. Box 448 Monroe, N.Y. 10950



HELP YOURSELF AND
SPI
SIGN UP SOME NEW MEMBERS!



SALES DEPARTMENT - NOTES -

ARLO SCOGGIN, 1345 Sleepy Hollow, Coshocton, Ohio 43812

WANTED - COLLECTORS

Who need covers or cards with sport cancellations or themes. Special circuit selections can be arranged for specialized sports or countries. Want list service is still available for stamps issued before 1978. Blank sales books are available for 50¢ each, postpaid.



SPORTS STAMPS PAGES

	Price	Post.
VOLUME 1, through 1960	12.25	(1.25)
VOLUME 2, 1961-65	13.25	(1.25)
Supplement No. 7, 1966	6.85	(0.95)
Suppl. 8, 1967	2.15	(0.95)
Suppl. 9, 1968	1.85	(0.95)
Suppl. 10, 1969	1.85	(0.95)
Suppl. 11, 1970	1.75	(0.95)
Suppl. 12, 1970	1.85	(0.95)
Suppl. 13, 1971	2.15	(0.95)
Suppl. 14, 1972		

OLYMPIC GAMES PAGES

	Price	Post.
1st thru 15th	5.90	(1.25)
16th Games (1956)	5.00	(1.25)
17th Games (1960)	7.55	(1.25)
18th Games (1964)	20.40	(2.00)
19th Games (1968) 3 parts	22.50	(2.45)
19th imp., 3 parts	4.35	(0.95)
19th Games part 4	17.50	(1.50)
Part 4 is for non-Olympic members only.		
20th Games (1972) Part 1	6.00	(1.25)
Part 1A non-I.O.C.	4.00	(1.25)
Part 2	10.00	(1.25)
Part 2A (unlisted)	1.10	(0.95)
Part 3	11.60	(1.50)
Part 3A (unlisted)	10.10	(1.25)
Part 4A (unlisted) FINAL	10.90	(1.25)
21st Games (1976) Part 1	18.25	(1.75)
Part 2	14.00	(2.00)
Part 3 FINAL	11.50	(1.50)

THE



K LINE

K-LINE PUBLISHING

P. O. BOX 159

BERWYN, ILLINOIS 60402

FEATURING SPORTS, OLYMPIC & SCOUT MATERIAL

1982-83 CATALOG OF SPORTS, OLYMPICS \$10. (POSTAGE INCL.)



1982-83
EDITION
NOW
READY

IMPERF.—VARIETIES

DeLUXE MINIATURE SHEETS

ARTISTS PROOFS

MULTICOLOR ESSAYS

Expert member of the A.I.E.P.
International Assoc. of Philatelic Experts

HENRI TRACHTENBERG

7 rue Jean Bonnefoix
94200 IVRY/SEINE FRANCE

"A Simplified Handbook of Adult Competitive Sports Stamps"

Bob Bruce & Jim Yarwood

Section 53 - Korea (Continued) to Kuwait

1968, October 12. 19th Olympic Games, Mexico City, Oct. 12-27, 1968. Unwmkd; imperforate; souvenir sheet (90 x 60 mm.) containing one each of Nos. 42 and 43, black inscriptions and Olympic rings in colors of stamp backgrounds in margin; designed by Chun Heui Han; lithography on granite paper by Korean Government Printing Agency, Seoul.

Olympic rings, plus

48. 7w multicolored (same as No. 42) (60,000--Trachtenberg)
7w multicolored (same as No. 43)

Sc 621a; Min 630A; Gi MS768(c); Mi 632-33/B1 278; Yt ---

1968, December 12. 19th Olympic Games, Mexico City, Oct. 12-27, 1968. Unwmkd; imperforate; souvenir sheet (90 x 60 mm.) containing one each of Nos. 44 and 45, black inscriptions and Olympic rings in colors of stamp backgrounds in margin; designed by Chun Heui Han; lithography on granite paper by Korean Government Printing Agency, Seoul.

Olympic rings, plus

49. 7w multicolored (same as No. 44) (60,000--Trachtenberg)
7w multicolored (same as No. 45)

Sc 623a; Min 631A; Gi MS768(a); Mi 628-29/B1 276; Yt ---

1969, October 3. 10th Korean Traditional Arts Contest, Taegu. Unwmkd; P 13 x 12½; designed by Chun Heui Han; lithography on granite paper by Korean Government Printing Agency, Seoul.

50. 7w yellow-olive/dark violet-blue/vermillion (cha-jun game)

Sc 688; Min 679; Gi 818; Mi 677; Yt 662

1969, October 28. 50th National Athletic Meet, Seoul, Oct. 28-Nov. 2, 1969. Unwmkd; P 12½ (Gi), 12½ x 13 (Nos. 54 and 55--Sc, Min, and Mi), 13 (Yt), 13 x 12½ (Nos. 51, 52, and 53--Sc, Min, and Mi); designed by Kim Sung Sil (Nos. 51 and 54); Hong Won Sook (No. 52) Chun Heui Han (No. 53), and Kim Kyung Ho (No. 55); lithography in sheets of fifty on granite paper by Korean Government Printing Agency, Seoul.

51. 10w multicolored (Korean wrestling)
52. 10w multicolored (fencing)
53. 10w multicolored (Korean karate)
54. 10w multicolored (volleyball)
55. 10w multicolored (soccer)

Sc 691-93; Min 682-86; Gi 824, 825, 826, 823, 822; Mi 680-84; Yt 555, 556, 557, 558, 554

Note: 1,000,000 sets issued.

1970, October 6. 51st National Athletic Meet, Seoul, Oct. 6-10 (Mi), 11 (Sc), 1970. Unwmkd; P 12½ x 13½ (Sc and Gi), 13 x 13½ (Min and Yt), 13 x 13 3/4 (Mi); designed by Chun Heui Han (Nos. 56 and 58) and Kim Sung Sil (No. 57); photogravure by Korean Government Printing Agency, Seoul.

Korea (Continued)

- 56. 10w multicolored (woman diver)
- 57. 10w multicolored (field hockey)
- 58. 10w multicolored (baseball)

Sc 730-32; Min 735, 734, 733; Gi 881-83; Mi 734-36; Yt 608, 607, 609

Note: 2,000,000 sets issued.

1970, October 6. 51st National Athletic Meet, Seoul, Oct. 6-10 (Mi), 11 (Sc), 1970. Unwkd; imperforate; souvenir sheet (90 x 85 mm.--Sc and Mi, 90 x 86 mm.--Yt, 91 x 87 mm.--Gi) containing two of No. 56, marginal inscription and decorations; designed by Chun Heui Han; photogravure by Korean Government Printing Agency, Seoul.

- 59. 10w multicolored (same as No. 56) (60,000--Trachtenberg)

Sc 730a; Min 735A; Gi MS884(a); Mi B1 311; Yt B1 186

1970, October 6. 51st National Athletic Meet, Seoul, Oct. 6-10 (Mi), 11 (Sc), 1970. Unwkd; imperforate; souvenir sheet (90 x 85 mm.--Sc and Mi, 90 x 86 mm.--Yt, 91 x 87 mm.--Gi) containing two of No. 57, marginal inscription and decorations; designed by Kim Sung Sil; photogravure by Korean Government Printing Agency, Seoul.

- 60. 10w multicolored (same as No. 57) (60,000--Trachtenberg)

Sc 731a; Min 734A; Gi MS884(b); Mi B1 312; Yt B1 185

1970, October 6. 51st National Athletic Meet, Seoul, Oct. 6-10 (Mi), 11 (Sc), 1970. Unwkd; imperforate; souvenir sheet (90 x 85 mm.--Sc and Mi, 90 x 86 mm.--Yt, 91 x 87 mm.--Gi) containing two of No. 58, marginal inscription and decorations; designed by Chun Heui Han; photogravure by Korean Government Printing Agency, Seoul.

- 61. 10w multicolored (same as No. 58) (60,000--Trachtenberg)

Sc 732a; Min 733A; Gi MS884(c); Mi B1 313; Yt B1 187

1971, May 2. 1st Asian Soccer Games, Seoul, May 2-13, 1971. Unwkd; P 12 (Mi and Yt), 12½ x 13 (Sc, Min, and Gi); designed by Kim Sung Sil; lithography on granite paper by Korean Government Printing Agency, Seoul.

- 62. 10w multicolored (soccer) (500,000)

Sc 751; Min 763; Gi 917; Mi 763; Yt 636

1971, August 20. Paintings by Kim Hong-do. Unwkd; P 13 (Mi), 13½ (Min and Yt), 13½ x 13 (Sc and Gi); designed by Kang Choon Whan; photogravure se-tenant by Korean Government Printing Agency, Seoul.

- 63. 10w multicolored (Kim Hong-do's Wrestlers")

Sc 791; Min 805; Gi 962; Mi 805, Yt 678

1971, August 20. Paintings by Kim Hong-do. Unwkd; P 13 (Mi), 13½ (Min and Yt), 13½ x 13 (Sc and Gi); souvenir sheet (123.5 x 90 mm.--Sc, 124 x 90 mm.--Mi, 125 x 90 mm.--Min and Yt), 130 x 90 mm.--Gi) containing one of No. 62; designed by Kang Choon Whan; photogravure by Korean Government Printing Agency, Seoul.

- 64. 10w multicolored (same as No. 63)

Sc 791a; Min 805A; Gi MS966(b); Mi 805/B1 340; Yt B1 217

Korea (Continued)

1971, October 8. 52nd National Athletic Meet, Seoul. Unwkd: P $12\frac{1}{2} \times 13\frac{1}{2}$ (Gi), $12\frac{3}{4} \times 13\frac{3}{4}$ (Mi), $13 \times 13\frac{1}{2}$ (Sc, Min, and Yt); designed by Chun Heui Han; photogravure by Korean Government Printing Agency, Seoul.

65. 10w multicolored (three archers)

66. 10w multicolored (judo)

Sc 798-99; Min 810-11; Gi 970, 969; Mi 811, 810; Yt 683, 682

1971, October 8. 52nd National Athletic Meet, Seoul. Unwkd: P $12\frac{3}{4} \times 13\frac{3}{4}$ (Mi), $13 \times 13\frac{1}{2}$ (Sc, Min, and Yt), $14\frac{1}{2} \times 13\frac{1}{2}$ (Gi) containing three of No. 65, black marginal inscription, blue and tan decorations; designed by Chun Heui Han; photogravure by Korean Government Printing Agency, Seoul.

67. 10w multicolored (same as No. 65)

Sc 798a; Min 810A; Gi MS971(b); Mi B1 811; Yt B1 223

1971, October 8. 52nd National Athletic Meet, Seoul. Unwkd: P $12\frac{3}{4} \times 13\frac{3}{4}$ (Mi), $13 \times 13\frac{1}{2}$ (Sc, Min, and Yt), $14\frac{1}{2} \times 13\frac{1}{2}$ (Gi) containing three of No. 66, black marginal inscription, blue and tan decorations; designed by Chun Heui Han; photogravure by Korean Government Printing Agency, Seoul.

68. 10w multicolored (same as No. 66)

Sc 799a; Min 811A; Gi MS971(a); Mi B1 810; Yt B1 222

1972, February 3. 11th Winter Olympic Games, Sapporo, Feb. 3-13, 1972. Unwkd: P 13 (Mi), $13 \times 13\frac{1}{2}$ (Sc, Min, Gi, and Yt); designed by Chun Heui Han (No. 69) and Keun Moon Li (No. 70); photogravure by Korean Government Printing Agency, Seoul.

69. 10w multicolored (speed skater)

70. 10w multicolored (female figure skater)

Sc 810-11; Min 824-25; Gi 988-89; Mi 824-25; Yt 696-97

Note: 1,500,000 sets issued--Trachtenberg.

1972, February 3. 11th Winter Olympic Games, Sapporo, Feb. 3-13, 1972. Unwkd: P 13 (Mi), $13 \times 13\frac{1}{2}$ (Sc, Min, Gi, and Yt); souvenir sheet (90 x 60 mm.) containing one each of Nos. 69 and 70, light blue marginal inscription; designed by Chun Heui Han and Keun Moon Li; photogravure by Korean Government Printing Agency, Seoul.

71. 10w multicolored (same as No. 69)

10w multicolored (same as No. 70)

Sc 811a; Min 824A; Gi MS990; Mi B1 352; Yt B1 239

1972, August 26. 20th Olympic Games, Munich, Aug. 26-Sept. 12, 1972. Unwkd: P $13\frac{1}{2}$ (Yt), $13 \times 13\frac{1}{2}$ (Sc, Min, Gi, and Mi); designed by Keun Moon Li (No. 72), Chun Heui Han (No. 73), Kim Sung Sil (No. 74), and Yong Bae Kim (No. 75); photogravure se-tenant (4 x 5, two designs per sheet) by Korean Government Printing Agency, Seoul.

72. 20w multicolored (weight lifting) (2,000,000--philatelic press)

73. 20w multicolored (judo) (2,000,000--philatelic press)

74. 20w multicolored (boxing) (2,000,000--philatelic press)

75. 20w multicolored (wrestling) (2,000,000--philatelic press)

Korea (Continued)

Sc 830-33; Min 846, 845, 848, 847; Gi 1012, 1011, 1014, 1013; Mi 846, 845, 848, 847, Yt 718, 717, 720, 719

1972, August 26. 20th Olympic Games, Munich, Aug. 26-Sept. 12, 1972. Unwkd; P 13 x 13½; souvenir sheet (90 x 60 mm.--Sc, Min, Mi, and Yt), 91 x 61 mm.--Gi) containing one each of Nos. 72 and 73, violet marginal inscription; designed by Keun Moon Li and Chun Heui Han; photogravure by Korean Government Printing Agency, Seoul.

76. 20w multicolored (same as No. 72) (80,000--philatelic press)
20w multicolored (same as No. 73)

Sc 831a; Min 845A; Gi MS1015a; Mi B1 354; Yt B1 231

1972, August 26. 20th Olympic Games, Munich, Aug. 26-Sept. 12, 1972. Unwkd; P 13 x 13½; souvenir sheet (90 x 60 mm.--Sc, Min, Mi, and Yt), 91 x 61 mm.--Gi) containing one each of Nos. 74 and 75, violet marginal inscription; designed by Kim Sung Sil and Yong Bae Kim; photogravure by Korean Government Printing Agency, Seoul.

77. 20w multicolored (same as No. 74) (80,000--philatelic press)
20w multicolored (same as No. 75)

Sc 833a; Min 847A; Gi MS1015b; Mi B1 355; Yt B1 232

Democratic People's Republic of Korea (North Korea)

1960, October 5. Liberation Day Sports Meet, Pyongyang. Unwkd; P 11; lithography without gum by Government Printing Office, Pyongyang.

1. 5ch yellow/green/pale yellow (running)
2. 5ch pale green/blue/orange (weight lifting)
3. 5ch green/blue/brown (bicycling)
4. 5ch blue/black/pale brown (gymnastics)
5. 5ch orange/green/black (soccer)
6. 10ch gray-green/orange (swimming)
7. 10ch yellow-green/red/blue (Pyongyang Moranbong Stadium)

Sc ---; Min ---; Gi N258-64; Mi 258, 256, 257, 259, 260, 261, 262; Yt 242, 243, 244, 246, 245, 247, 248

Note: 200,000 sets issued.

1960, December 15 (Mi), January 6, 1961 (No. 8--Gi), December 15, 1969 (No. 9--Gi). Sports. Unwkd; P 11; lithography without gum by Government Printing Office, Pyongyang.

8. 5ch multicolored (Korean wrestling)
9. 5ch multicolored (archery)

Sc ---; Min ---; Gi 271, 273, Mi 267, 269; Yt 264, 263

1961, November 4. Physical Culture Day. Unwkd; P 11; lithography without gum by Government Printing Office, Pyongyang.

10. 2ch gray (table tennis)
 - a. Imperforate (Mi and Halm and Kobylanski)
11. 10ch green-gray (basketball)
 - a. Imperforate (Mi and Halm and Kobylanski)
12. 10ch pale blue (rowing)
 - a. Imperforate (Mi and Halm and Kobylanski)

Democratic People's Republic of Korea (North Korea) (Continued)

13. 10ch brown-lilac (high jump)
 - a. Imperforate (Mi and Halm and Kobylanski)
14. 20ch brown-red (sports emblem)
 - a. Imperforate (Mi and Halm and Kobylanski)

Sc ---; Min ---; Gi N344, N346, N347, N348, N349; Mi 343, 347, 345, 346, 348, Yt 322, 324, 325, 326, 327

Note: 800,000 perforate sets issued.

1961, December 12. Winter sports. Unwkd; P 11; lithography by Government Printing Office, Pyongyang.

15. 10ch gray/dark gray (figure skating)
16. 10ch dark green/gray (speed skating)
17. 10ch pale blue/gray (hockey)
18. 10ch pale violet-blue/dark gray (skiing)

Sc ---; Min ---; Gi N359-62; Mi 360, 359, 361, 358; Yt 349, 348, 350, 347

Note: 800,000 sets issued.

1963, June 15. Pioneers. Unwkd; P 11; lithography without gum by Government Printing Office Pyongyang.

19. 5ch multicolored (running)

Sc ---; Min ---; Gi N459; Mi 466, Yt 456

1963, December 15. National Marksmanship Championship. Unwkd; P 11, lithography without gum by Government Printing Office, Pyongyang.

20. 5ch multicolored (pistol marksman)
21. 10ch multicolored (rifle marksman)
22. 10ch multicolored (rifle marksman)

Sc ---; Min ---; Gi N498-500; Mi 505-07; Yt 490-92

1964, August 5. 9th Winter Olympic Games, Innsbruck, Jan. 29-Feb. 9, 1964. Unwkd; P 11; lithography without gum by Government Printing Office, Pyongyang.

23. 5ch blue/red/orange (downhill skiing)
24. 10ch blue-green/dark blue/orange (speed skating)
25. 10ch violet-blue/red/orange (slalom skiing)

Sc ---; Min ---; Gi N532-34; Mi 535-37; Yt 520-22

1964, September 5. 18th Olympic Games, Tokyo, Oct. 10-25, 1964. Unwkd; P 11; lithography (Gi and Mi) and photogravure (Gi) by Government Printing Office, Pyongyang.

26. 2ch gray/orange-brown (rifle marksman)
 - a. Imperforate (Gi, Mi, and Halm and Kobylanski)
27. 5ch green/red-brown (bicycling)
 - a. Imperforate (Gi, Mi, and Halm and Kobylanski)

Democratic People's Republic of Korea (North Korea) (Continued)

28. 10ch blue/orange (running)
 - a. Imperforate (Gi, Mi, and Halm and Kobylanski)
29. 10ch dark blue-green/orange (wrestling)
 - a. Imperforate (Gi, Mi, and Halm and Kobylanski)
30. 40ch violet-blue/brown (volleyball)
 - a. Imperforate (Gi, Mi, and Halm and Kobylanski)

Sc ---; Min ---; Gi N539-43; Mi 542-46; Yt 523, 524, 526, 525, 527

Note: 1,000,000 sets issued (Trachtenberg).

1964, October 15. Games of the New Emerging Forces (GANEF0), Jakarta, 1963. Unwmkd; P 11; lithography without gum by Government Printing Office, Pyongyang.

31. 2ch multicolored (weight lifting)
 - a. Imperforate (Mi)
32. 5ch multicolored (runner)
 - a. Imperforate (Mi)
33. 5ch green-blue/black/pale brown (boxing)
 - a. Imperforate (Mi)
34. 10ch multicolored (soccer)
 - a. Imperforate (Mi)
35. 10ch multicolored (globe emblem)
 - a. Imperforate (Mi)

Sc ---; Min ---; Gi N549-53; Mi 553, 555, 554, 556, 557; Yt 534-38

1965, August 1. GANEFO Soccer Championship, Pyongyang, Aug. 1-11, 1965. Unwmkd; 11; lithography by Government Printing Office, Pyongyang.

36. 10ch multicolored (soccer)
 - a. Imperforate without gum (Mi)
37. 10ch multicolored (Moranbong Stadium, Pyongyang)
 - a. Imperforate without gum (Mi)

Sc ---; Min ---; Gi N604-05; Mi 604-05; Yt 585, 584

1964, September 24. Sports. Unwmkd; P 11; lithography by Government Printing Office, Pyongyang.

38. 2ch multicolored (pole vault)
 - a. Imperforate (Mi)
39. 4ch multicolored (javelin)
 - a. Imperforate (Mi)
40. 10ch multicolored (discus)
 - a. Imperforate (Mi)
41. 10ch multicolored (high jump)
 - a. Imperforate (Mi)
42. 10ch multicolored (shot put)
 - a. Imperforate (Mi)

Sc ---; Min ---; Gi N608-12; Mi 608, 609, 610, 612, 611; Yt 588, 589, 590, 592, 591

1965, December 15. Drawings by Kim Hong Do. Unwmkd; P 12½; recess printed by Government Printing Office, Pyongyang.

43. 10ch brown (wrestling)

Democratic People's Republic of Korea (North Korea) (Continued)

Sc ---; Min ---; Gi N630; Mi 629; Yt 609

1965, December 15. Youth. Unwkd; P 13 (Mi), 13½ (Gi and Yt); lithography by Government Printing Office, Pyongyang.

44. 4ch multicolored (boxing)

Sc ---; Min ---; Gi N635; Mi 624; Yt 614

1965, Dec. 31 (Gi and Mi), 1966 (Yt). Yachts. Unwkd; P 13 (Yt), 13½ (Gi and Mi); lithography by Government Printing Office, Pyongyang.

45. 2ch green/dark blue-green/red (Finn class sailboat)

a. Imperforate without gum (Mi)

46. 10ch blue/dark blue/red ("5-5" class sailboat)

a. Imperforate without gum (Mi)

47. 10ch pale blue/dark blue/red (Dragon class sailboat)

a. Imperforate without gum (Mi)

48. 10ch light blue/blue/red (Star class sailboat)

a. Imperforate without gum (Mi)

Sc ---; Min ---; Gi N667-70; Mi 666-69; Yt 701-04

1966, July 11. 8th World Cup Soccer Championship, Wembley, July 11-30, 1966. Unwkd; P 11; lithography without gum by Government Printing Office, Pyongyang.

49. 10ch multicolored (soccer player)

a. Imperforate without gum (Mi)

50. 10ch multicolored (Rimet Cup, soccer ball, and soccer shoes)

a. Imperforate without gum (Mi)

51. 10ch multicolored (goalie save)

a. Imperforate without gum (Mi)

Sc ---; Min ---; Gi N713-15; Mi 713, 711, 712; Yt 691, 693, 692

1966, October 30. GANEFO competition, Phnom-Penh. Unwkd; P 10½ (Yt), 11 (Gi and Mi); lithography se-tenant vertically without gum by Government Printing Office, Pyongyang.

52. 5ch blue/black (wrestling)

a. Imperforate without gum (Mi)

53. 10ch green/black (basketball)

a. Imperforate without gum (Mi)

54. 10ch brown-red/black (table tennis)

a. Imperforate without gum (Mi)

Sc ---; Min ---; Gi N737-39; Mi 732, 734, 733; Yt 711, 713, 712

1966, November 30. National defense sports. Unwkd; P 12½; recess by Government Printing Office, Pyongyang.

55. 2ch dark brown (parachuting)

56. 5ch orange-red (equestrian jumping)

57. 10ch gray-violet (motorcycle racing)

Sc ---; Min ---; Gi N749-52; Mi 744-46; Yt 718, 719, 720

Democratic People's Republic of Korea (North Korea) (Continued)

1967, April 11. 29th International Table Tennis Championship, Pyongyang. Unwmd; P 11; lithography by Government Printing Office, Pyongyang.

58. 5ch blue/red/black (table tennis player)
 - a. Without gum (Gi)
 - b. Imperforate without gum (Mi)
59. 10ch yellow/red/black (table tennis player)
 - a. Imperforate without gum (Mi)
60. 40ch green/red/black (table tennis player)
 - a. Imperforate without gum (Mi)

Sc ---; Min ---; Gi N775-77; Mi 773-75; Yt 754-56

1969, September 10. (Gi and Mi), 1971 (Yt). National Sports Conference (20th Anniversary of Sports Day--Gi). Unwmd; P 11; photogravure without gum by Government Printing Office, Pyongyang.

61. 10ch multicolored (runner with torch--Mi, relay runner with baton--Gi)

Sc ---; Min ---; Gi N930; Mi 921; Yt 925

1972, October 1. (Gi and Mi), 1973 (Yt). 20th Olympic Games, Munich, Aug. 26-Sept. 12, 1972. Unwmd; P 11; lithography without gum by Government Printing Office, Pyongyang.

Olympic rings, plus

63. 2ch multicolored (volleyball)
64. 5ch multicolored (boxing)
65. 10ch multicolored (judo)
66. 10ch multicolored (wrestling)
67. 40ch multicolored (marksmanship)

Sc ---; Min ---; Gi N1078-82; Mi 1103-07; Yt 1027, 1028, 1030, 1029, 1031

Kuwait

1948, July 28 (Sc), 29 (Mi). 14th Olympic Games, Wembley, July 29-Aug. 14, 1948. Wmd multiple crown and "GVIR"; P 14½ x 14 (Sc), 15 x 14 (Min and Gi); Great Britain Sc 271-74 overprinted "Kuwait" with new value; designed by Percy Metcalfe (No. 1), Abram Games (No. 2), Stanley D. Scott (No. 3), Edmund Dulac (No. 4); photogravure by Harrison and Sons, Ltd., London.

1. 2½a on 2½p ultramarine (globe and wreath) (89,264--Seebacher, 179,060--Mi)
2. 3a on 3p dark violet (Olympic rings and globe) (91,203--Mi)
3. 6a on 6p lilac (Olympic rings and branches) (83,677--Mi)
4. 14 on 1sh sepia (Olympic rings and allegory) (83,395--Mi)

Sc 84-7; Min 103-06; Gi 76-9; Min 77-80; Yt 87-90

1963, November 8. Arab School Games, 1963. Unwmd; P 14 x 14½ (Nos. 7, 9, 10, and 11--Gi), 14 x 15 (Nos. 7, 9, 10, and 11--Min and Mi), 14½ (Yt), 14½ x 14 (Sc, Nos. 5, 6, 8, and 12--Gi), 15 x 14 (Nos. 5, 6, 8, and 12--Min and Mi); photogravure by Harrison and Sons, Ltd., London.